



Ennismore Mews  
Knightsbridge, SW7







Discreetly positioned on the highly sought-after and picturesque cobbled setting of Ennismore Mews, this exceptional 2194 sq ft period house offers an elegant blend of traditional character and contemporary living, arranged over four beautifully designed floors.

The property provides four generously proportioned double bedrooms, including an impressive principal suite occupying the top floor, which enjoys direct access to a private balcony. There are three well-appointed bathrooms complemented by an additional guest w/c.

The lower ground floor has been thoughtfully arranged to include a dedicated cinema room/ private entertainment space, ideal for film evenings or relaxing in comfort.

Ennismore Mews is renowned for its quiet, village-like atmosphere and striking cobbled streetscape, offering a rare sense of tranquillity in a prime central location, with easy access to excellent transport links, renowned schools, and an array of boutiques, restaurants, and cultural attractions.

### £11,050 pcm

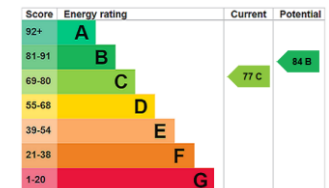
Additional tenant charges apply (fees apply to non-AST tenancies only)

Tenancy Agreement Fee: £300

References per Tenant/Guarantor: £60

Inventory check (approx. £100 – £250 inc. VAT)

[chestertons.co.uk/property-to-rent/applicable-fees](http://chestertons.co.uk/property-to-rent/applicable-fees)



**Minimum Term:** 1 months  
**Deposit Required:** Six weeks  
**Local Authority:** City of Westminster  
**Council Tax Band:** H  
**EPC Rating:** To be confirmed  
**Furnished**

### *Chestertons Knightsbridge & Belgravia Lettings*

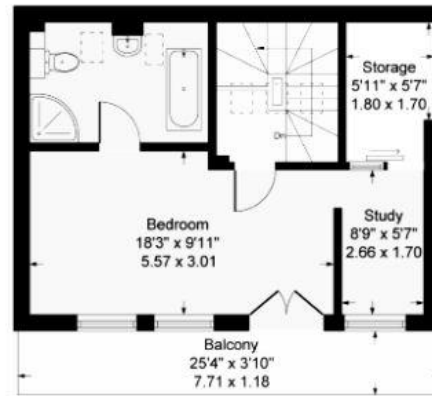
31 Lowndes Street  
 London  
 SW1X 9HX

[knightsbridgelettingsusers@chestertons.co.uk](mailto:knightsbridgelettingsusers@chestertons.co.uk)  
 02072353530  
[chestertons.co.uk](http://chestertons.co.uk)

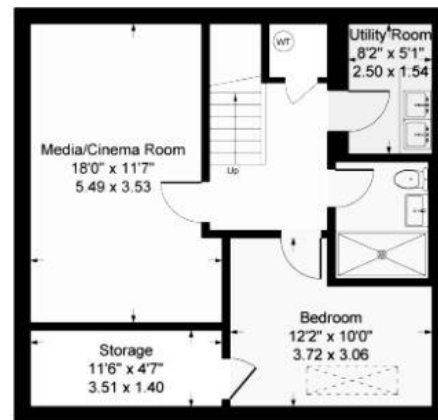
Approximate Gross Internal Area = 2194 sq ft / 203.87 sq m



**First Floor**



**Second Floor**



**Lower Ground Floor**



**Ground Floor**

Chesterton UK Services Limited trading as Chestertons for themselves and for the vendor of this property whose agents they are, give notice that (i) these particulars do not constitute any part of an offer or contract, (ii) all statements contained within these particulars are made without responsibility on the part of Chestertons or the vendor, (iii) whilst made in good faith, none of the statements contained within these particulars are to be relied upon as a statement or representation of fact, (iv) any intending purchasers must satisfy themselves by inspection or otherwise as to the correctness of each of the statements contained within these particulars, (v) the vendor does not make or give either Chestertons or any person in their employment any authority to make or give representation or warranty whatsoever in relation to this property. Wide angle lenses may be used. ©Copyright Chestertons | Chesterton Global Ltd | Registered Office 40 Connaught Street, Hyde Park, London W2 2AB Registered Company Number 05334580.



This paper is  
100% recyclable