



**POOLE  
TOWNSEND**

# Foxfield Road, Walney, Barrow-in-furness, LA14 3SJ

£195,000

🛏️ 2 🚿 1 🚗 1



This nicely presented bungalow is located in the ever popular North Scale area of Walney. The property is set on a nice sized plot with an enclosed garden to the front, gated driveway leading to a garage and further enclosed garden to the rear with lawn and patio areas. The accommodation features a nicely proportioned lounge with large window overlooking the front garden, a kitchen/dining room, inner hallway, two bedrooms and a bathroom with a shower installed over the bath. The bungalow also benefits from having a gas-fired central heating system, UPVC framed double glazing throughout and no upper chain.

### Location

What3Words///worker.onion.future

### Description

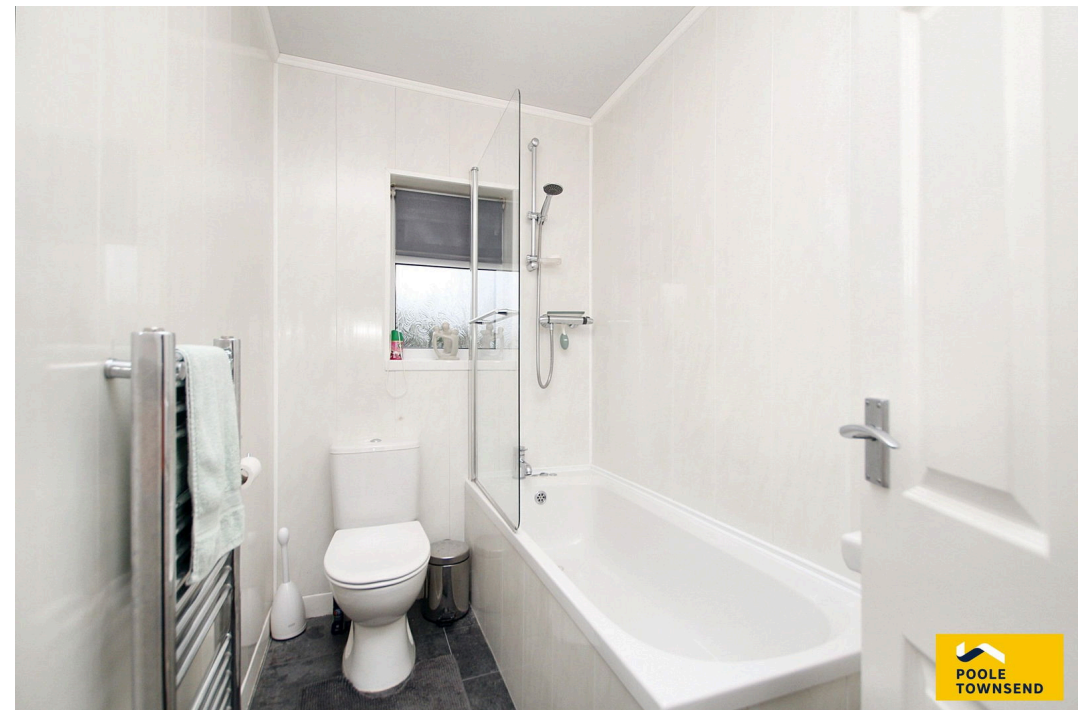
This two bedroomed, semi-detached bungalow offers nicely appointed accommodation that will appeal to many buyers.

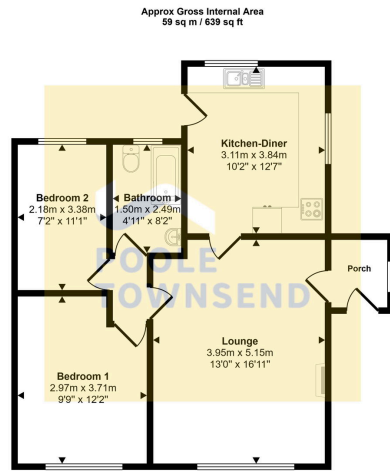
This popular location in North Scale benefits from having a bus service, a community centre and the Crown pub.

The property is set behind an enclosed garden which provides improved privacy from inside the property. The side porch leads you directly into the lounge where there is a polished fireplace with a glass fronted gas fire with polished chrome coloured trim. The large window provides a pleasant outlook into the garden as well as letting lots of natural light into the room.

The kitchen has fitted cupboards and drawers that wrap around three sides of the room with additional cupboard storage above including glazed display cabinets. There is an integrated double oven with grill, a halogen style hob with cooker hood, an integrated fridge and freezer and plumbing beneath the sink for a washing machine.

The inner hallway has a loft hatch and doors to the bathroom and both bedrooms. The larger bedroom, which is a double room, is at the front of the property where there is also ample space for a range of wardrobe furniture, bedside cabinets and drawers etc. The second bedroom also enjoys a lovely view into the rear garden, providing ample space for a single bed and dressing table etc.

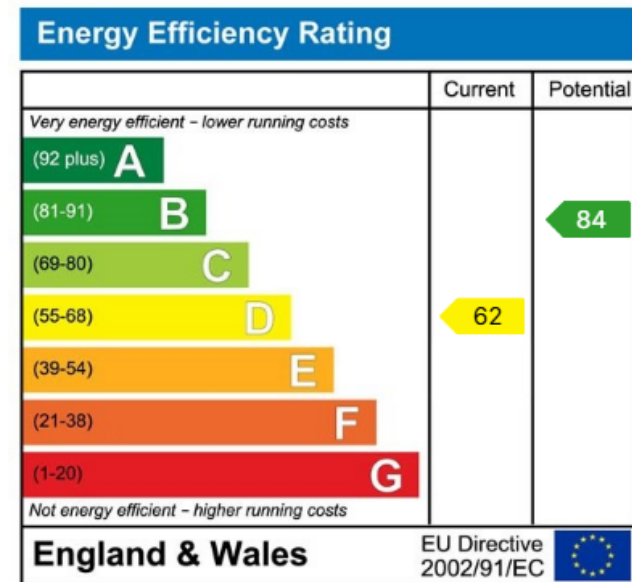




Floorplan

This floorplan is only for illustrative purposes and is not to scale. Measurements of rooms, doors, windows, and any items are approximate and no responsibility is taken for any error, omission or mis-statement. Icons of items such as bathroom suites are representations only and may not look like the real items. Made with Made Snappy 360.

- 2 Bed Semi-Detached Bungalow
- Good Sized Plot
- Driveway And Garage
- Gas Fired Central Heating
- Council Tax Band - B
- Sought After Location
- Gardens Front And Rear
- Two Bedrooms
- UPVC Double Glazing Throughout
- NO UPPER CHAIN!



Visit us at  
[www.pooletownsend.co.uk](http://www.pooletownsend.co.uk)  
[enquiries@pooletownsend.co.uk](mailto:enquiries@pooletownsend.co.uk)

We are open  
 Monday – Friday 9.00 – 5.00  
 Saturday 9.00 – 1.00

Barrow 01229 811811  
 Ulverston 01229 588111  
 Grange 015395 33316  
 Kendal 01539 734455  
 Milnthorpe 015395 62044