



## Tynemouth Street, SW6

### £575,000

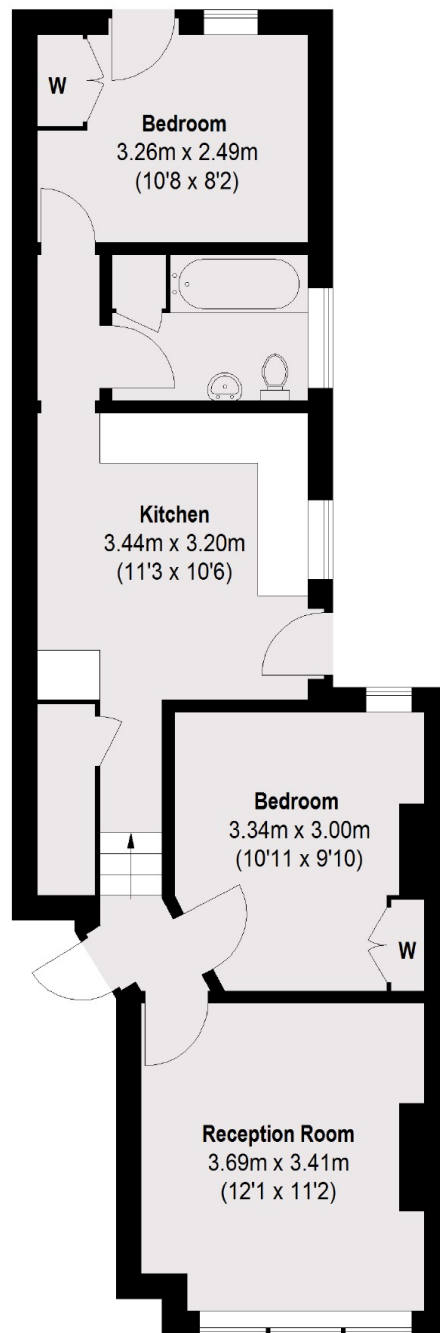
A well proportioned two-double-bedroom ground-floor garden flat set on a quiet residential street in the popular Sands End area. The property features a separate, fully integrated kitchen and a spacious front living room, with access to the private garden available from both the kitchen and the rear bedroom.

Tynemouth Street is quiet residential street located in the popular Sands End area of Fulham. The property is well placed to benefit from the amenities and transport links of Wandsworth Bridge Road, Imperial Wharf and Fulham Broadway, with the prestigious Chelsea Harbour Club moments away.

### Features

- Two Double Bedrooms
- Victorian Terraced Conversion
- Private Garden
- Potential To Extend (STPP)
- Spacious Kitchen Dining Area
- Light and Airy Reception Room

# Tynemouth Street, London, SW6



**Ground Floor**

Total area (approx.): 54.4 sq. m (586 sq. ft)

## Dexters

Fulham  
569 Fulham Road  
London  
SW6 1ES  
Sales  
020 7386 5386

Energy Rating: D. We aim to make our particulars both accurate and reliable. However they are not guaranteed; nor do they form part of an offer or contract. If you require clarification on any points then please contact us, especially if you're traveling some distance to view. Please note that appliances and heating systems have not been tested and therefore no warranties can be given as to their good working order.

 **RICS** | Regulated  
Estate Agent  
and Letting Agent

[dexters.co.uk](https://www.dexters.co.uk)