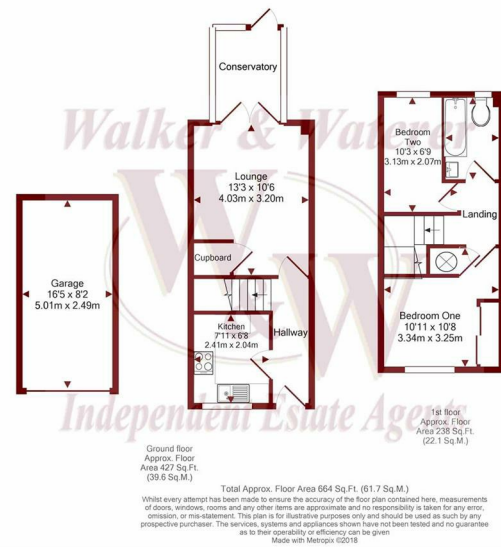




Lovage Road | | Whiteley | PO15 7NE

£1,250 PCM





Energy Efficiency Rating		Current	Potential
Very energy efficient - lower running costs			
(92 plus)	A		9
(81-91)	B		
(69-80)	C	72	
(55-68)	D		
(39-54)	E		
(21-38)	F		
(1-20)	G		
Not energy efficient - higher running costs			
England & Wales		EU Directive 2002/91/EC	



Description

W&W are delighted to offer for rent this two bedroom mid terrace home. The property boasts two bedrooms, lounge/dining room, kitchen with space for washing machine and a fridge freezer, a conservatory and family bathroom. The property also benefits from an enclosed rear garden, garage and driveway parking. Please call to enquire 01489 580800 Please note we have used historical images with up to date photos to be added

Key features

- Two Bedroom House To Rent
- Lounge/Dining Room With Understairs Storage Cupboard
- Family Bathroom
- Available Now
- Low Maintenance Garden
- Kitchen
- Conservatory With Doors Opening Out Onto The Garden
- Allocated Parking & Garage
- Short Strolling Distance To Whiteley Shopping Centre
- Viewing Essential



H3 Whiteley Shopping Centre
Whiteley Way
Whiteley
Hants
PO15 7PD
01489 580800
pm@walkerwaterer.co.uk
www.walkerwaterer.co.uk