

WELCOME TO HYDE VALE

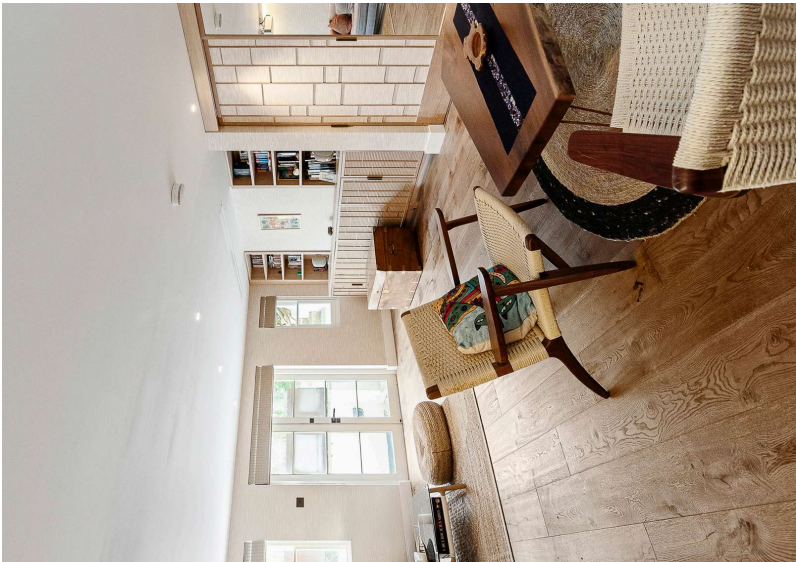


ABOUT THE HOME

A mid-19th century, Grade II Listed Georgian home offers generous accommodation and has been thoughtfully updated for modern living. Set behind a beautifully landscaped three-tier garden, the property also benefits from a secluded self-sufficient office/studio complete with its own patio area.

- Georgian period house
- Three bedrooms
- Three reception rooms
- Two bathrooms and two toilets
- Terraced
- Freehold





THE FINER DETAILS

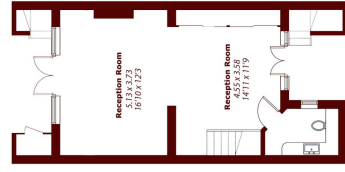
The bright, spacious kitchen features a central island, integrated appliances and opens into a large dining area. A utility, WC and a contemporary wet room with a fitted shower enhance convenience. Upstairs, three well-proportioned bedrooms are complemented by a distinctive alcove and a stylish family bathroom.

Additional highlights include high ceilings, elegant wood flooring, ample built-in storage including loft space, and air-conditioning units in select rooms and the outhouse. Royal Hills' specialist shops and Greenwicks renowned parkland are moments away. Greenwicks mainline and DLR stations are a short walk, providing effortless links to popular destinations.

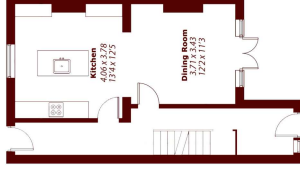
STEP INSIDE HYDE VALE



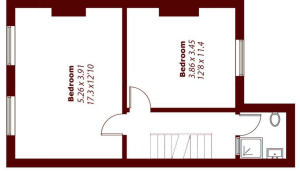
Second Floor



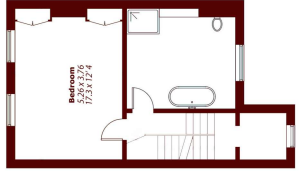
Lower Ground Floor



Ground Floor



First Floor



Second Floor

Greenwich
221 Greenwich High Road, SE10 8NB
Sales: 020 6312 0312

We aim to make our particulars both accurate and reliable. However, they are not guaranteed, nor do they form part of an offer or contract. If you require clarification on any points, please contact us, especially if you are reviewing them in advance of viewing the property. Our property systems may not reflect actual floorplans and fixtures. The information is for guidance only and is not intended to constitute an offer of any financial product.

Total approx. floor area: 2,149 sq. ft. (199.7 sq. m)
(Excluding Eaves)

