



Apartment

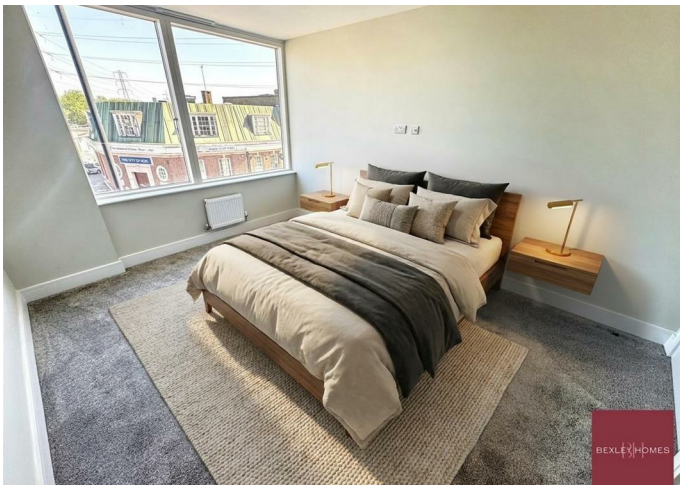
# FLAT 3, RIVER CRAY HOUSE 154 CRAYFORD ROAD,, CRAYFORD,

Per Month

# £1,900

### FEATURES

- Brand new two-bedroom apartment
- Spacious open-plan living area
- Principal bedroom with en-suite
- High-quality finish throughout
- Modern kitchen with integrated appliances
- Additional stylish bathroom



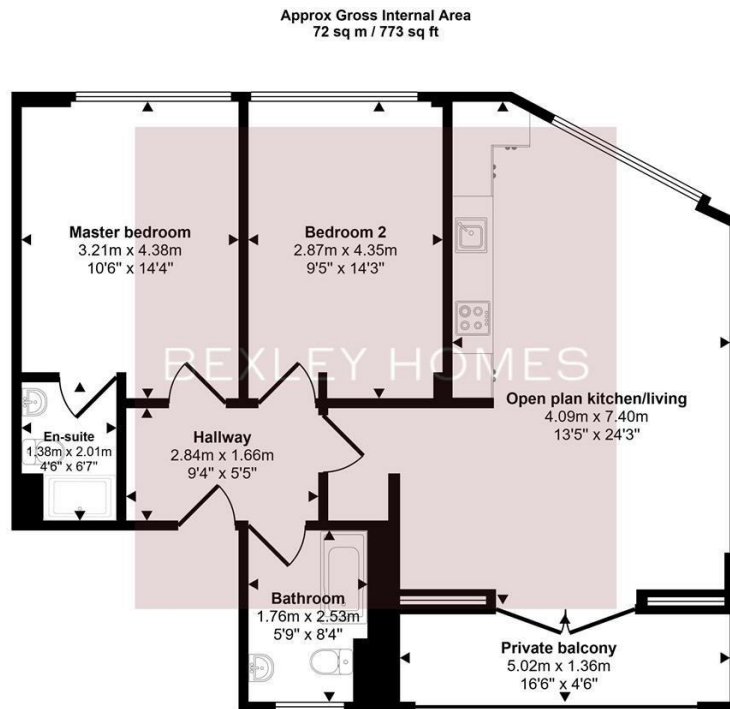
# 2 Bedroom Apartment located in Crayford

Two-Bedroom Apartment with En-Suite – Crayford Road, Crayford, DA1

An exceptional opportunity to rent this brand-new, two-bedroom apartment, thoughtfully designed and finished to a high specification throughout, set within a modern development in Crayford.

This impressive home boasts a spacious and well-proportioned open-plan living and kitchen area, perfect for both relaxing and entertaining. The stylish kitchen is fully equipped with integrated appliances, including a fridge freezer, oven, and washing machine, offering a seamless and modern finish.

The property features two well-sized bedrooms, with the principal bedroom benefiting from a private en-suite shower room, adding an extra level of comfort and convenience. A separate contemporary family bathroom serves the second bedroom and guests. The development also benefits from lift access, ensuring ease of movement throughout the building.



This floorplan is only for illustrative purposes and is not to scale. Measurements of rooms, doors, windows, and any items are approximate and no responsibility is taken for any error, omission or mis-statement. Icons of items such as bathroom suites are representations only and may not look like the real items. Made with Made Snappy 360.

Call us on  
01322 948500

Belvedere@bexleyhomes.co.uk  
www.bexleyhomes.co.uk

Council Tax Band  
New Build

Energy Efficiency Rating		Current	Potential
<i>Very energy efficient - lower running costs</i>			
(92 plus)	A		
(81-91)	B		
(69-80)	C		
(55-68)	D		
(39-54)	E		
(21-38)	F		
(1-20)	G		
<i>Not energy efficient - higher running costs</i>			
<b>England &amp; Wales</b>		EU Directive	
		2002/91/EC	

Agents Note: Whilst every care has been taken to prepare these particulars, they are for guidance purposes only. All measurements are approximate and are for general guidance purposes only and whilst every care has been taken to ensure their accuracy, they should not be relied upon and potential buyers are advised to recheck the measurements.

BEXLEY HOMES