



£1,600 pcm
Warren Way, Edgware



 2
Bedrooms

 1
Bathroom

211 Edgware Rd, London, NW9 6LP |
colindale@warrenbradleystates.co.uk

020 8200 7007



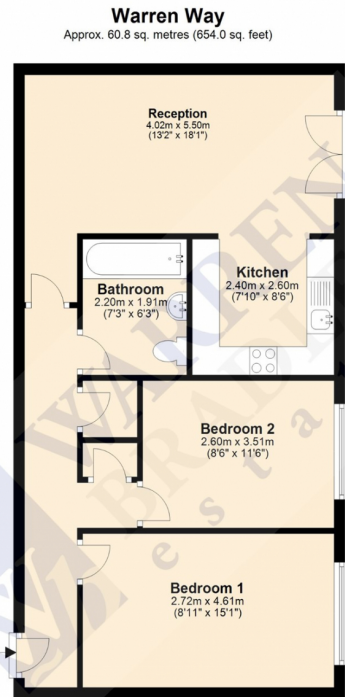
£1,600 pcm
Warren Way, Edgware



Warren Bradley Estates are pleased to offer for rent this two bedroom second floor flat, in this popular purpose built development. The property benefits from two large bedrooms, lounge leading to a modern fully fitted kitchen, fully tiled bathroom, wood laminate flooring throughout, double glazing and allocated parking.

The property is located close to multiple local shops, eateries, and public transport services.

Offered furnished or unfurnished and is available from 30th May 2026.



Total area: approx. 60.8 sq. metres (654.0 sq. feet)

Disclaimer: Please note this floor plan is for marketing purposes and is to be used as a guide only.
Plan produced using PlanUp.

Energy Efficiency Rating		Current	Potential
Very energy efficient - lower running costs			
(92-100)	A		
(81-91)	B		
(69-80)	C	75	83
(55-68)	D		
(39-54)	E		
(21-38)	F		
(1-20)	G		
Not energy efficient - higher running costs			
England, Scotland & Wales		EU Directive 2002/91/EC	

