



2 Bedrooms | 1 Bathroom | 1 Reception Room

Selcroft Road | Purley | CR8 1AJ

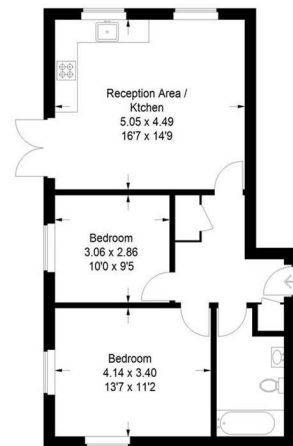
**Guide price £330,000**

**LOFT**

Selcroft Road |  
 Purley | CR8 1AJ  
 Guide price £330,000

- Ground floor apartment with direct access to communal gardens
- Contemporary finish throughout with high quality finishing throughout
- Open-plan kitchen/reception room with integrated appliances and space for dining
- Two double bedrooms and full size family bathroom
- Modern block with 5 years warranty remaining
- Just a 10 minute walk to Purley train station and town centre
- Located on a quiet, sought after residential road

**Ground Floor**  
**Hallway**  
**Kitchen/Living Area**  
 16'7 x 14'9 (5.05m x 4.50m)  
**Bedroom**  
 13'7 x 11'2 (4.14m x 3.40m)  
**Bedroom**  
 10'0 x 9'5 (3.05m x 2.87m)  
**Bathroom**  
 5'11 x 11'2 (1.80m x 3.40m)  
**Outside**  
**Allocated Parking**  
**Communal Gardens**



Ground Floor

23a High Street  
 Purley  
 Surrey  
 CR8 2AF  
 0208 660 8070

This plan is for layout guidance only. Not drawn to scale unless stated. Windows and door openings are approximate. Whilst every care is taken in the preparation of this plan, please check all dimensions, shapes and compass bearings before making any decisions reliant upon them. (ID1286159)

EPC Rating: A

