



Eaton Rise, W5

£750,000

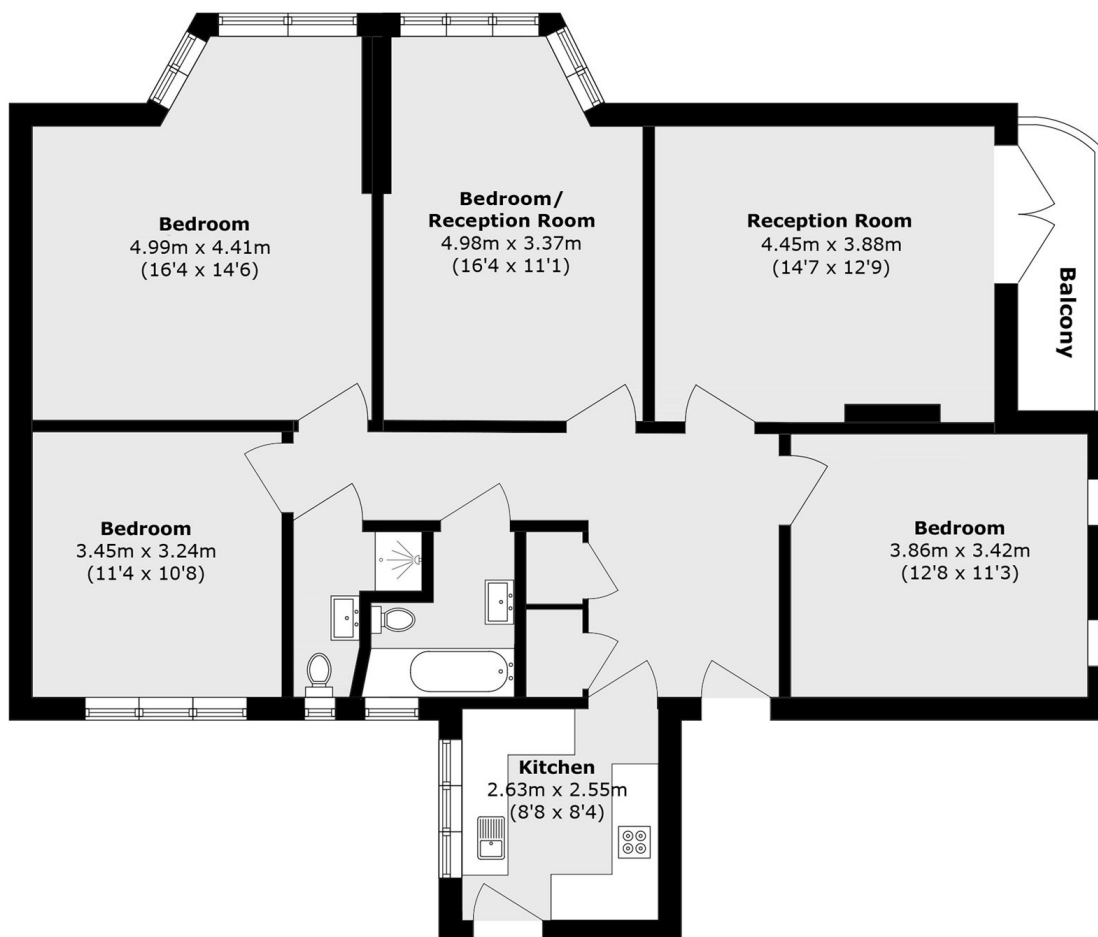
A spacious top-floor apartment set within a popular Art Deco development, offering nearly 1,200 sq. Ft. Of accommodation, including four bedrooms, one reception room, and a private balcony. Presented in excellent condition throughout, the property also benefits from a garage, share of freehold, and no onward chain.

Approximately half a mile from Ealing Broadway station, providing Elizabeth Line services to Central London in around 13 minutes and Canary Wharf in approximately 30 minutes, as well as direct links to Heathrow Airport. Ealing Broadway also offers an excellent selection of shops, restaurants, and local amenities.

Features

- Four Bedrooms
- Top Floor
- Garage
- Close To Schools
- No Onward Chain

Eaton Rise, London, W5



Total area (approx.): 110.1 sq. m (1185.1 sq. ft)

Balcony area (approx.): 3.6 sq. m (10.7 sq. ft)