



3 Bedrooms

House - Semi-Detached

Offers Over

£159,995

Located in



<https://www.caledoniabureau.co.uk/>



15 Eastcroft

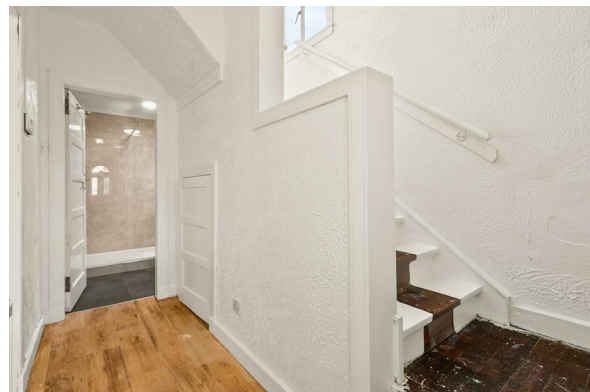
| | G73 3AH



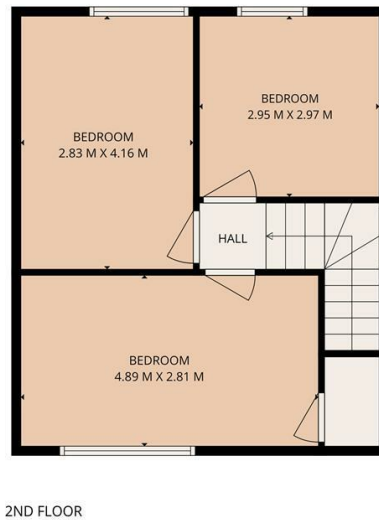
Nestled in the charming area of Eastcroft, Rutherglen, this delightful semi-detached house offers a perfect blend of comfort and space.

15 Eastcroft

£159,995 Freehold



- Spacious 3 Bedroom Semi Detached
- Corner Plot
- Boasting three well-proportioned bedrooms
- Ideal for families
- Conveniently located near local amenities, schools, and transport links



TOTAL: 83 m²
 1st floor: 41 m², 2nd floor: 42 m²
 EXCLUDED AREAS: FIREPLACE: 1 m², WALLS: 8 m²
THIS PLAN IS FOR LAYOUT GUIDANCE ONLY AND SHOULD NOT BE RELIED UPON AS FACT



Council Tax Band

Local Authority

Agents Note: Whilst every care has been taken to prepare these particulars, they are for guidance purposes only. All measurements are approximate and are for general guidance purposes only and whilst every care has been taken to ensure their accuracy, they should not be relied upon and potential buyers/tenants are advised to recheck the measurements.

Energy Efficiency Rating		
	Current	Potential
Very energy efficient - lower running costs		
(92 plus) A		
(81-91) B		
(69-80) C		
(55-68) D		
(39-54) E		
(21-38) F		
(1-20) G		
Not energy efficient - higher running costs		
Scotland	EU Directive 2002/91/EC	

2 Dumbarton Road Clydebank
 West Dunbartonshire
 G81 1TU



clydebank@caledoniabureau.co.uk

01419 522284

<https://www.caledoniabureau.co.uk/>