

Foxhall



Estate Agents

625 Foxhall Road
Ipswich IP3 8ND

Unit 4, Ropes Drive
Kesgrave IP5 2FU

01473 721133

01473 613296

info@foxhallestateagents.co.uk

www.foxhallestateagents.co.uk



Mildmay Road

South-East, Ipswich, IP3 9PH

Asking price £185,000



Mildmay Road

South-East, Ipswich, IP3 9PH

Asking price £185,000



Front Garden

Flowerbed borders, off-road parking for one car via concrete slabs and a pathway to the front door and through to the passageway leading to the rear garden.

Entrance Hall

Entry via a single glazed door facing the front, laminate flooring, access to the stairs and a door into the lounge.

Lounge

12'8" x 9'4" (3.86m x 2.84m)

Double glazed window facing the front, high picture rails, radiator, laminate flooring, under stairs cupboard and a door into the kitchen / dining room.

Kitchen/Diner

15'5" x 7'11" (4.70m x 2.41m)

Double glazed window facing the rear, single glazed door facing the side, door to the bathroom, radiator, wall and base fitted units with cupboards and drawers, built-in electric oven, electric hob and a cooker hood above, plumbing for a washing machine, tiled flooring, tiled splash-back, 1 1/2 stainless steel single sink bowl and drainer unit and space for a fridge freezer.

Bathroom

Double glazed obscure window facing the rear, low-flush W.C., pedestal wash hand basin with hot and cold taps, panel bath with hot and cold taps with an electric shower over, tiled splash-back, lino flooring, radiator and coved ceiling.

Landing

Access to the loft, doors to bedrooms one, two and the bathroom.

Bedroom One

12'7" x 14'1" (3.84m x 4.29m)

Double glazed window facing the front, over stairs storage cupboard and a radiator.

Bedroom Two

12'5" x 8'3" (3.78m x 2.51m)

Double glazed window facing the rear, radiator and a cupboard housing the Ideal Logic combi boiler.

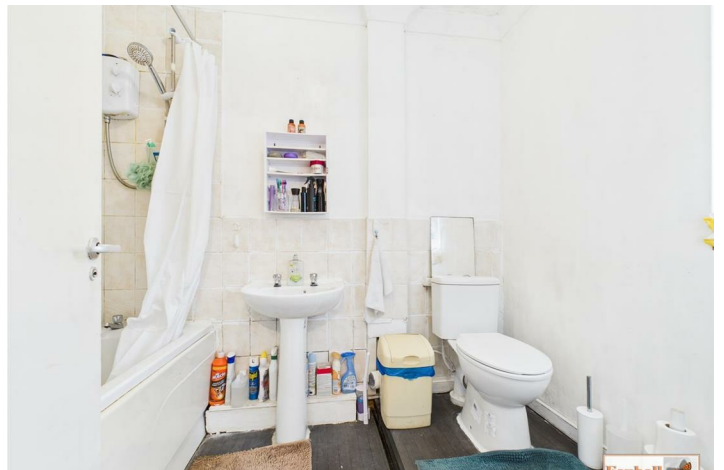
Rear Garden

Fully enclosed north facing rear garden enclosed by panel and wire fencing, mostly laid to lawn with a pathway, outside tap and a gate to the shared access to the front of the garden.

Agents Notes

Tenure - Freehold

Council Tax Band - B





Road Map



Hybrid Map



Terrain Map



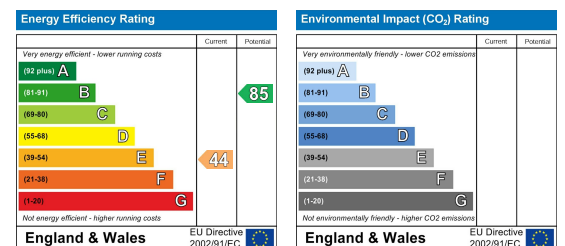
Floor Plan



Viewing

Please contact us on 01473 721133 if you wish to arrange a viewing appointment for this property or require further information.

Energy Efficiency Graph



These particulars, whilst believed to be accurate are set out as a general outline only for guidance and do not constitute any part of an offer or contract. Intending purchasers should not rely on them as statements of representation of fact, but must satisfy themselves by inspection or otherwise as to their accuracy. No person in this firm's employment has the authority to make or give any representation or warranty in respect of the property.