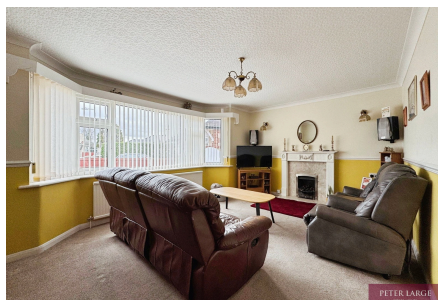


4 Doren Avenue, Rhyl, Denbigshire, LL18 4LE

£205,000

🛏 2 🚗 1 🚗 1



This two-bedroom detached bungalow is offered for sale in a sought after quiet cul-de-sac location in Rhy location in Rhyl, providing a practical layout with scope for modernising to suit individual requirements. The accommodation comprises a large lounge, open-plan kitchen offering a flexible space for cooking and dining. There are two bedrooms, including a master bedroom with built-in wardrobes and a further double bedroom, with shower room. Externally, the bungalow benefits from a large rear garden, a spacious garage, ample off-street parking with the benefit of a further hard standing area ideal for Caravan, motorhome or boat. The property is located within reach of Rhyl's town centre, where you will find a selection of shops, supermarkets, cafés and other everyday amenities, as well as the seafront promenade and

PETER LARGE

ESTATE AGENTS

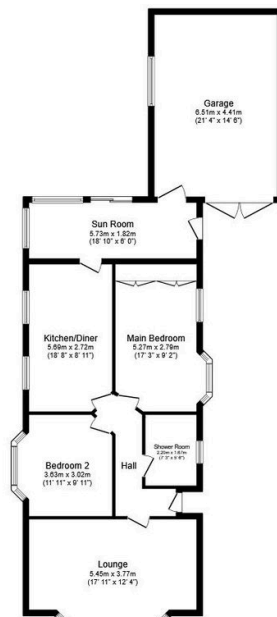
beach. Local parks and open spaces around Rhyl provide opportunities for walking and leisure. The property has no forward chain

CONSUMER PROTECTION REGULATIONS 2008 AND THE BUSINESS PROTECTION FROM MISLEADING MARKETING REGULATIONS 2008

These particulars, whilst believed to be accurate, are set out for guidance only and do not constitute any part of an offer or contract. Prospective purchasers or tenants should not rely on these particulars as statement or representation of fact, but must satisfy themselves by inspection or otherwise as to their accuracy. No person in the employment of PETER LARGE Estate Agents has the authority to make or give any representation or warranty in relation to the property. Room sizes are approximate and all comments are of the opinion of PETER LARGE Estate agents having carried out a walk through inspection. These sales particulars are prepared under the consumer regulations 2008 and are governed by the business from misleading marketing regulations 2008.

Key Features

- Detached
- Large private rear garden
- Two double bedrooms
- Large lounge
- Freehold - No Chain
- Spacious lounge
- Spacious garage and driveway parking
- Sought-after location
- EPC- D
- Instructed 25/02/2025



Floor Plan

Floor area 118.5 sq.m. (1,276 sq.ft.)

Total floor area: 118.5 sq.m. (1,276 sq.ft.)

This floor plan is for illustrative purposes only. It is not drawn to scale. Any measurements, floor areas (including any total floor area), openings and orientations are approximate. No details are guaranteed, they cannot be relied upon for any purpose and do not form any part of any agreement. No liability is taken for any error, omission or misstatement. A party must rely upon its own inspection(s). Powered by www.Propertybox.io