



DANIEL ARCHER

exp<sup>®</sup> UK

@ daniel.archer@exp.uk.com

🌐 danielarcher.exp.uk.com

☎ 07792 947 756



## Panmuir Road, West Wimbledon, SW20

£700,000

🛏 2 🚿 2 🛋 1

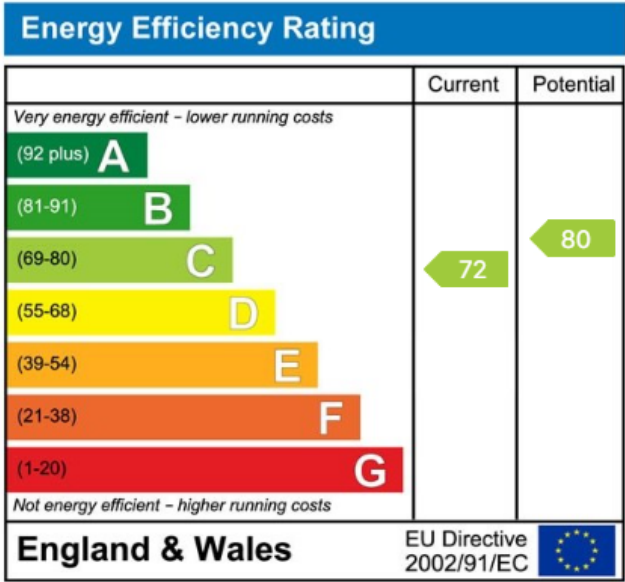
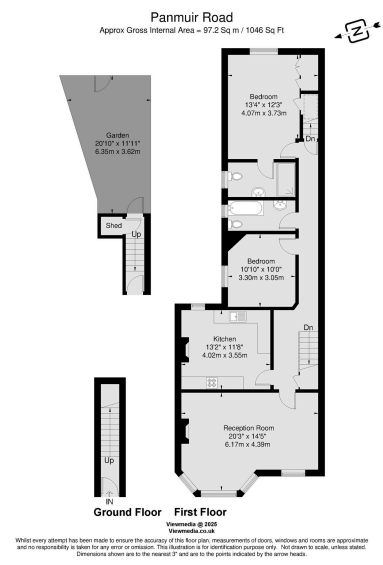
- Stunning Two Double Bedroom First Floor Maisonette (1,046 Sq.Ft)
- Elegant Interiors and High Quality Finish
- Eat-In Kitchen
- Private Garden
- Easy Access Shops, Hollymount & St Matthews Schools and Amenities
- Two Bath/Shower Rooms (One En-Suite)
- Beautiful Front Aspect 20ft Reception Room
- Architect Designed Remodelled Layout
- Cul-de-Sac Location on Edge of Cottenham Park Close to Raynes Park Station
- Raynes Park Station Close By. Property Ref: DA0587



Stunning two double bedroom first floor maisonette (1,046 Sq.Ft) has been completely refurbished and redesigned to provide two double bedrooms and two bath/shower rooms, a generous reception room and a lovely kitchen breakfast room. With direct access to a private garden, enviably situated in a residential cul-de-sac on the edge of wonderful Cottenham Park within close proximity to Hollymount & St Matthews Schools. The property offers bright and spacious accommodation with enormous period appeal, sympathetically enhanced with stylish interiors and high quality finish throughout – the perfect blend of classic elegance and modern style. Located between Raynes Park Station/Centre and Wimbledon Common. Property Ref: DA0587







eXp World UK Ltd is a registered company at Corporation Service Company (UK) Limited, 5 Churchill Place, 10th Floor, London, United Kingdom, E14 5HU. Registered company number is 12016573. VAT Registration Number is 327 4120 29