



Connells

David Harman Drive
West Bromwich

David Harman Drive
West Bromwich B71 3RH

for sale offers in excess of
£120,000



Property Description

This modern apartment is tucked away in a peaceful setting on a residential estate that is located just off the Pennyhill Lane area. The apartment is exceptionally well maintained and is of a show home standard. The kitchen comes with most of the white goods built in and there are approximately 105 years remaining on the lease. Situated within a sought after residential location and benefiting from major bus and train links with easy access to both Birmingham and Wolverhampton City Centres. The GROUND FLOOR apartment briefly comprises of an entrance hall with intercom system, lounge/diner, traditional style fitted kitchen with integral appliances, a large bedroom, modern bathroom suite, central heating and one allocated parking space.

CALL NOW TO VIEW!

Entrance Hall

Entrance into the property gained via a door from the communal hallway, two storage cupboards and doors leading to bathroom, bedroom and lounge/diner.

Lounge/Diner

Featuring double glazed windows to the front and side, central heated radiator and archway opening leading into the kitchen.

Kitchen

Fully fitted kitchen comprising of a range of wall and base units with work surfaces over, stainless steel sink and drainer, plumbing point for washing machine, wall mounted central heating boiler, integrated oven and hob, fitted cooker good and a double glazed window to the side.

Bedroom One

Featuring a double glazed window to the front, fitted wardrobes and a central heated radiator.

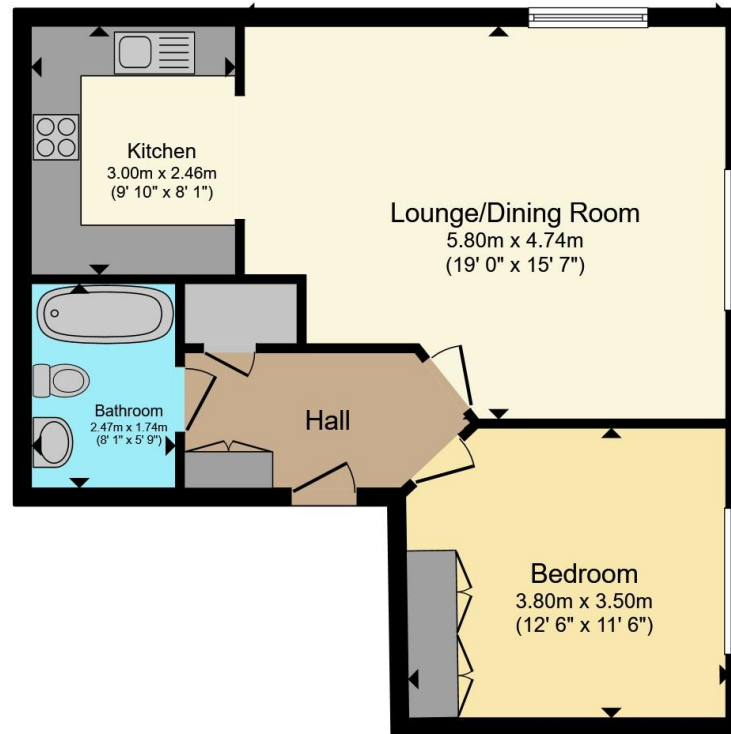
Bathroom

Fitted bathroom suite comprising of a fitted panel bath with shower over, low level WC, wash hand basin, partially tiled and a central heated radiator.









Total floor area 57.2 m² (616 sq.ft.) approx

This floor plan is for illustrative purposes only. It is not drawn to scale. Any measurements, floor areas (including any total floor area), openings and orientation are approximate. No details are guaranteed, they cannot be relied upon for any purpose and they do not form part of any agreement. No liability is taken for any error, omission or misstatement. A party must rely upon its own inspection(s). Powered by www.propertybox.io



To view this property please contact Connells on

T 0121 525 1177
E westbromwich@connells.co.uk

3 Astle Park
 WEST BROMWICH B70 8NS

EPC Rating: C Council Tax Band: A

Service Charge: 1844.64

Ground Rent: 300.00

Tenure: Leasehold

view this property online connells.co.uk/Property/WBW311366

This is a Leasehold property. We are awaiting further details about the Term of the lease. For further information please contact the branch. Please note additional fees could be incurred for items such as Leasehold packs.



1. MONEY LAUNDERING REGULATIONS Intending purchasers will be asked to produce identification documentation at a later stage and we would ask for your co-operation in order that there will be no delay in agreeing the sale. 2. These particulars do not constitute part or all of an offer or contract. 3. The measurements indicated are supplied for guidance only and as such must be considered incorrect. Potential buyers are advised to recheck measurements before committing to any expense. 4. We have not tested any apparatus, equipment, fixtures, fittings or services and it is in the buyers interest to check the working condition of any appliances.

Connells Residential is registered in England and Wales under company number 1489613, Registered Office is Cumbria House, 16-20 Hockliffe Street, Leighton Buzzard, Bedfordshire, LU7 1GN. VAT Registration Number is 500 2481 05.

See all our properties at www.connells.co.uk | www.rightmove.co.uk | www.zoopla.co.uk

Property Ref: WBW311366 - 0003