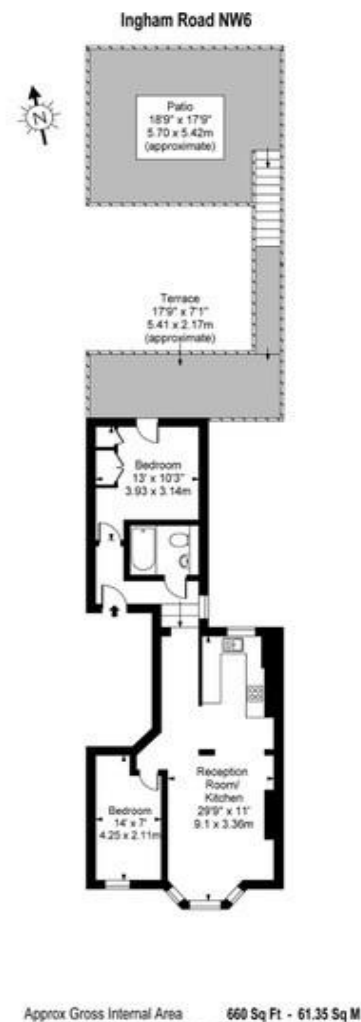


2 Bedroom Flat  
Ingham Road  
London NW6

- First Floor Apartment
- High Ceilings
- Wood flooring
- Open plan fitted kitchen

Price: £552.69pw / £2,395 pcm



Environmental Impact (CO <sub>2</sub> ) Rating		
	Current	Potential
Very environmentally friendly - lower CO <sub>2</sub> emissions		
(92-100) <b>A</b>		
(81-91) <b>B</b>		
(69-80) <b>C</b>		
(55-68) <b>D</b>		
(39-54) <b>E</b>	52	66
(21-38) <b>F</b>		
(1-20) <b>G</b>		
Not environmentally friendly - higher CO <sub>2</sub> emissions		
England, Scotland & Wales		EU Directive 2002/91/EC
Energy Efficiency Rating		
	Current	Potential
Very energy efficient - lower running costs		
(92-100) <b>A</b>		
(81-91) <b>B</b>		
(69-80) <b>C</b>		
(55-68) <b>D</b>	67	78
(39-54) <b>E</b>		
(21-38) <b>F</b>		
(1-20) <b>G</b>		
Not energy efficient - higher running costs		
England, Scotland & Wales		EU Directive 2002/91/EC

Newly redecorated two double bedroom first floor apartment (660 sq ft.) located close to West Hampstead. Comprising fully fitted open plan kitchen to the reception room, modern bathroom and a private terrace which leads down to a patio garden. The property is located just off Fortune Green Road which leads down to West End Lane with its many popular restaurants, pubs and boutique shops. West Hampstead tube (Jubilee line) and Thameslink stations are less than a mile away.

ML Estates wish to advise prospective purchasers that we have not checked the services or appliances. These particulars have been prepared as a guide only, any floor-plan or map is for illustrative purposes only. ML Estates, for themselves and for the vendors or lessors of this property whose agents they are given notice that: the particulars have been produced in good faith; do not constitute any part of a contract; no person in the employment of ML Estates has any authority to make or give any representation of warranty in relation to this property.