

Springfield, Stevenage Road, Walkern, SG2 7NN.
Asking Price £800,000



sales and lettings



Found in the popular village of Walkern is this stunning four double bedroom detached property of approximately 2400 square feet which the current owners have modernised to a high standard but also keeping some of the 1930's original features.

This family home offers a kitchen & dining room approaching 28ft in length along with a range of 'Neff' built in appliances, in addition to this there is a well proportioned living room with a log burner a second reception room currently doubling up as an office, downstairs showroom, utility room and boot room. Leading off the second reception room is a high quality sun room and bar which has French doors opening out into the rear garden.

On the first floor you will find three double bedrooms and the family four piece bathroom suite with further stairs leading up to the master bedroom, dressing room and ensuite!

Outside is a well maintained rear garden along with a workshop of approximately 20ft in length and to the front you will find parking for two vehicles.

The village itself offers a well stocked mini supermarket, local pub, well regarded primary school, village hall and playing fields. Within close proximity is a Sainsbury supermarket, Stevenage mainline train station and the A602 and also the A1(M).

To fully appreciate the extent the current owners have gone to turn this property into a beautiful family home is to arrange an appointment to view!

Entrance Porch

5'2 x 3'11

Accessed by a timber and glazed front door with tiled floor and double glazed windows to the front and side aspect along with a separate connecting door to the kitchen/dining room.

Kitchen & Dining Room

27'10 x 13'9

Kitchen

Double glazed window to the front aspect along with a 'Velux' roof light, fitted with a range of modern light grey gloss wall and base level units along with complementary quartz worktops and breakfast bar and coloured acrylic splashbacks, inset sink drainer with mixer taps over. A range of built in 'Neff' appliances to include a double oven with plate warming draw, induction hob with chimney hood over, under counter freezer, built in fridge/freezer and dishwasher. There is also a water softener, underfloor heating and pocket door leading into the inner hallway.

Dining Room

Double glazed window to the front aspect along with a 'Velux' roof light, underfloor heated tiles, pocket doors to the living room, inset spotlights.

Living Room

14'10 x 13'6

Double glazed bay window to the rear aspect, feature fireplace with inset log burner and hearth, ornate coving and ceiling roses, wooden style flooring, door leading to the inner hallway.

Reception Two/Office

12'11 x 10'5

Feature fireplace with inset log burner, wooden effect flooring, picture rails, radiator, double glazed doors and side aspects to the sun room & bar.

Sun Room & Bar

12'0 x 10'4

Constructed in a Victorian style with dwarf wall and double glazed units to the side and rear along with French doors opening into the rear garden, integrated spotlights, timber topped bar combining a seating area and consumable shelving.

Inner Hallway

20'2 x 5'8

Double glazed door and side panel to the side aspect, stairs leading to the first floor, doors to reception two, downstairs shower room and utility room/boot room, radiator and wooden style flooring.

Downstairs Shower Room

6'45 x 5'2

Double glazed opaque window to the front aspect, corner shower cubicle with rainfall shower head and separate handset attachment, wall hung vanity wash hand basin, low level WC, heated chrome towel rail, tiled flooring and splashbacks, inset spotlights.

Utility Room

8'8 x 6'6

Double glazed window to the side aspect, fitted with a range of base and wall level units, stainless steel sink drainer, radiator, plumbed for a washing machine, door to the boot room.

Boot Room

8'7 x 6'0

Double glazed window to the rear aspect, radiator, tiled flooring, hot water cylinder cupboard.

First Floor Landing

12'9 x 8'3

Spacious galleried style landing with a double glazed window to the side aspect, radiator and stairs leading to the master suite.

Bedroom Two

14'11 x 13'7

Double glazed window to the rear aspect, feature floor to ceiling exposed brick fireplace, radiator.

Bedroom Three

15'0 x 11'2

Double glazed window to the front aspect, feature exposed brickwork to two walls, Victorian style ornate radiator.

Bedroom Four

11'11 x 10'7

Double glazed window to the rear aspect, feature picture rail and fireplace, built in cupboard, radiator.

Family Bathroom

11'11 x 5'5

Double glazed opaque window to the rear aspect, single end curved panel bath with side mounted taps and shower attachment, corner shower cubicle with rainfall shower, low level WC, vanity wash hand basin, tiled flooring and splashbacks, heated towel rail and inset spotlights.





Second Floor

Stairs leading up from the first floor landing, double glazed picture window.

Master Bedroom

15'7 x 14'4

Double glazed window to the front aspect and double glazed 'Velux' window to the rear aspect, feature wall with inset display alcoves, range of bespoke fitted under eaves dressing cupboards, radiator, door to ensuite and access to dressing area, inset spotlights.

Dressing Room

10'9 x 8'1

Double glazed window to the front aspect, fitted under eaves dressing cupboards and wardrobes along with a dressing table.

Ensuite

12'10 x 5'0

Walk in double width shower enclosure with rainfall shower and separate handset, low level WC, his and hers double vanity sinks, low level WC, tiled floor and splashbacks, heated towel rail.

Frontage

Dual block paved driveways, twin side access to the rear garden, York Stone paving bordered by established shrub and tree borders, path leading to the front porch.

Rear Garden

Indian sandstone paved patio leading off the rear of the property, laid to lawn with paved path leading to the workshop, separate paved patio leading to the decked area which has a covered pergola along with heat lamps.

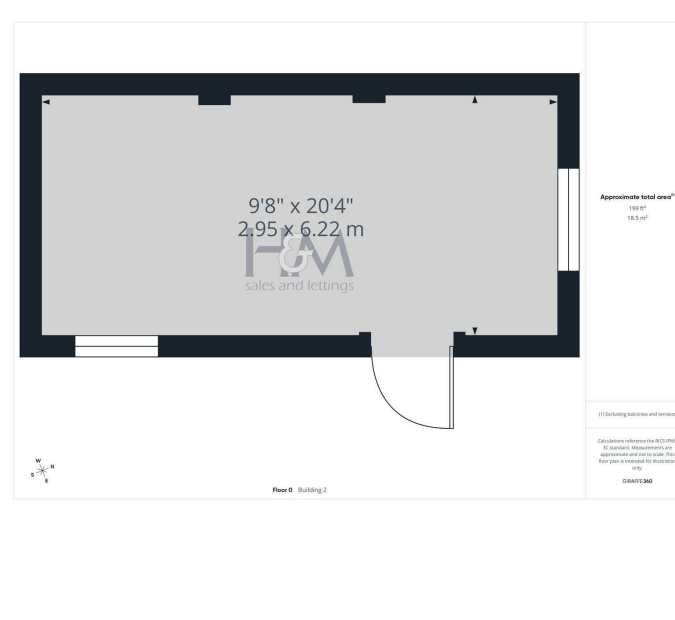
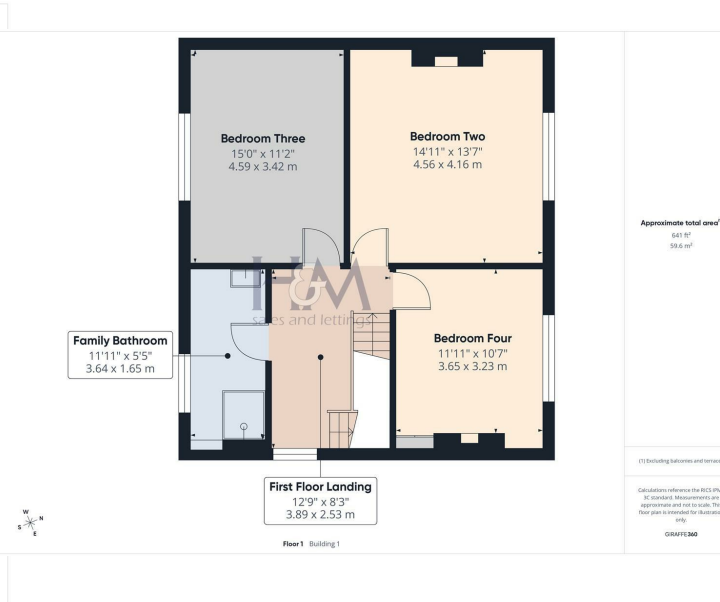
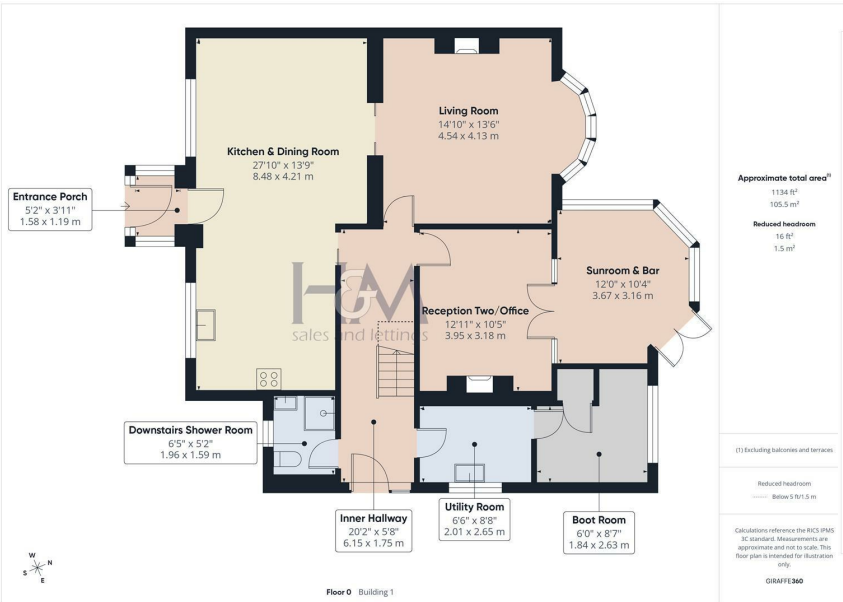
Workshop

20'4 x 9'8

Double glazed windows to the rear and side aspect, power and light







86 High Street
 Stevenage
 Hertfordshire
 SG1 3DW
 01438 728444
 stevenage@homesandmortgages.co.uk

Energy Efficiency Rating		Current	Potential
Very energy efficient - lower running costs			
(92 plus) A			
(81-91) B			
(69-80) C			
(55-68) D			
(39-54) E			
(21-38) F			
(1-20) G			
Not energy efficient - higher running costs			
		72	81
England & Wales		EU Directive 2002/91/EC	