



Ewell Road, KT6

£199,950

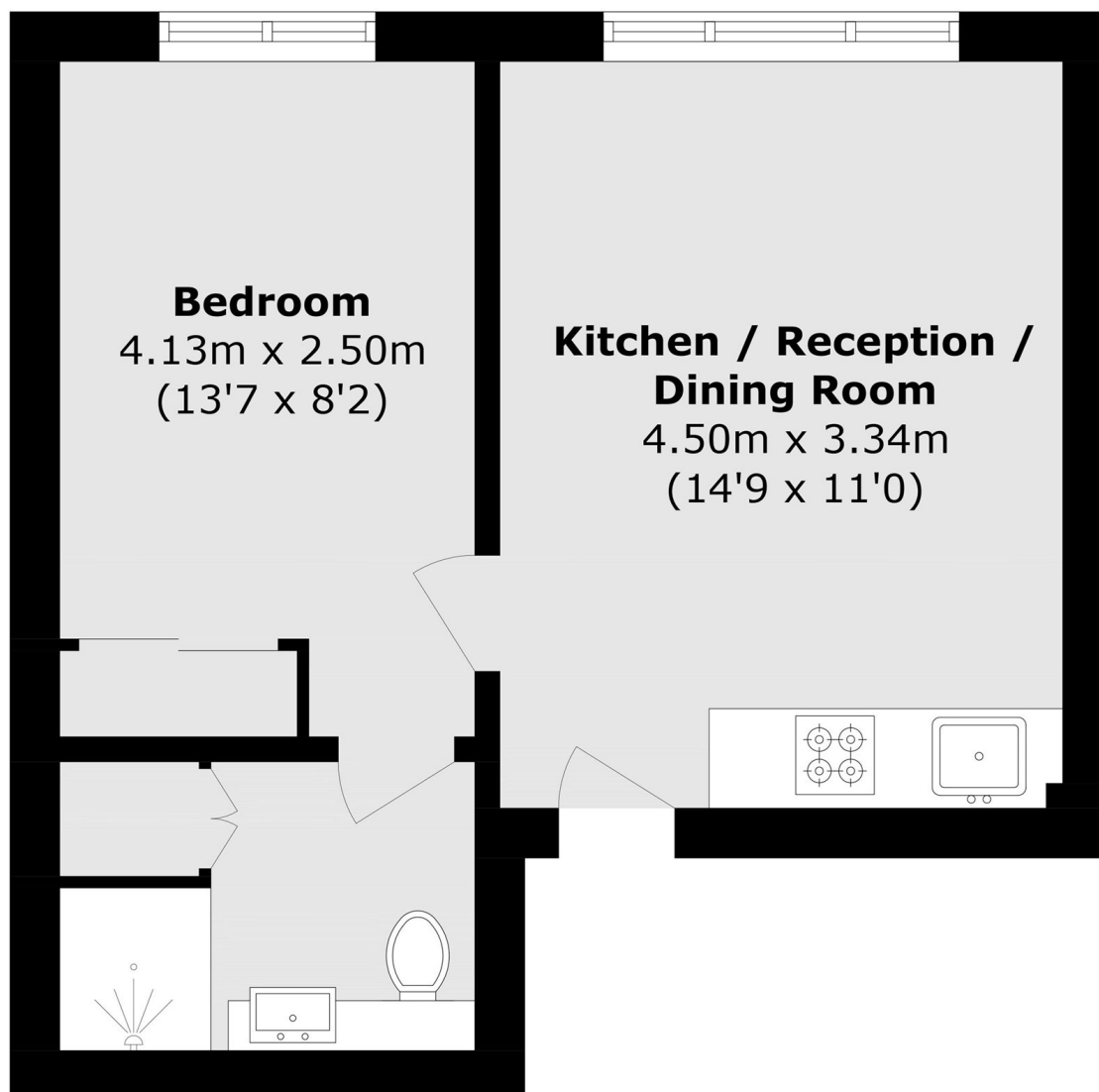
A modern apartment is offered to the market with no onward chain. In immaculate condition this property offers one double bedroom and an open plan kitchen/reception room. Further benefits include fitted wardrobes in the bedroom and storage in the bathroom.

Situated just over a mile from Surbiton's mainline station and busy high street, the area has a fantastic selection of shops, bars, restaurants and popular local parks. The property is also under half a mile away from Tolworth's mainline station and Broadway. There is an excellent local bus service and easy access to Kingston's town centre and the A3.

Features

- One Double Bedroom
- Open Plan Living
- Immaculate Condition
- No Onward Chain
- Long Lease
- Convenient Location

Ewell Road, Surbiton, KT6



Total area (approx.): 30.8 sq. m (331.5 sq. ft)