



Keswick Road, SW15

£749,950

Dexters



Keswick Road, SW15

A beautifully presented two double bedroom garden flat offering 783 Sq Ft of well-balanced living space and Off Street Parking. This property is perfectly positioned on a quiet residential road in the heart of East Putney.

The property features a generous kitchen/reception room with a contemporary fitted kitchen and ample space for dining and entertaining, opening directly onto a private rear garden. The garden is thoughtfully landscaped with a patio seating area and low-maintenance lawn - ideal for summer gatherings and outdoor dining.

Keswick Road is conveniently located for the amenities of Putney High Street, with its selection of shops, cafés and restaurants. Excellent transport links are close by including Putney mainline station (direct to Waterloo), East Putney Underground station (District Line) and a number of bus routes, providing easy access into Central London and beyond. The green open spaces of Wandsworth Park and the River Thames are also within easy reach.

Features

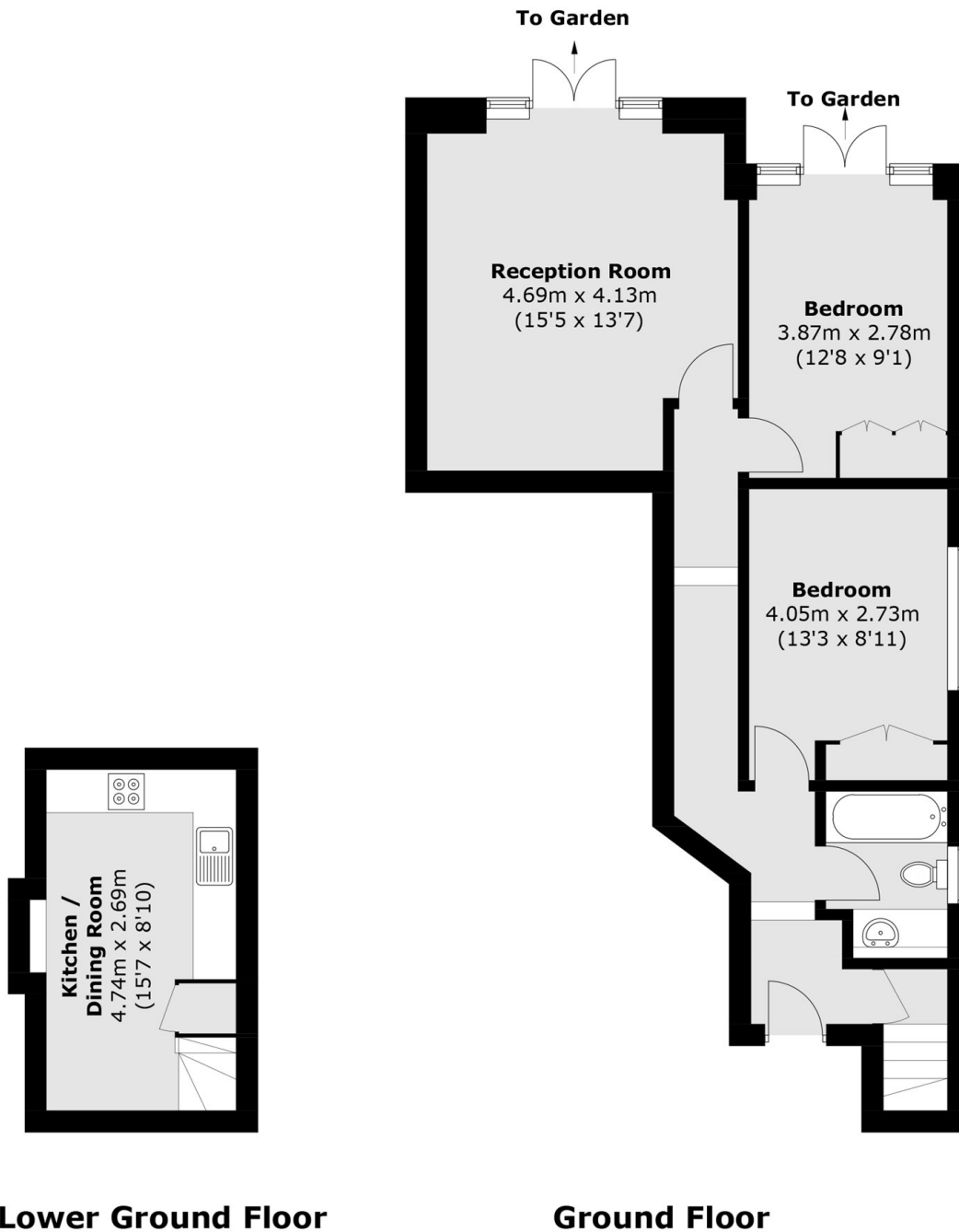
- Two Bedrooms
- One Bathroom
- Off Street Parking Space
- Private Garden
- Period Property
- 783 Sq. Ft







Keswick Road, London, SW15



Total area (approx.): 72.8 sq. m (783.6 sq. ft)