





Benefitting from a generous plot is this three bedroom end terrace home set in a discreet location, and that would lend itself to improvement and modernisation.

A double glazed front door provides access into the property and immediately into the kitchen. The kitchen is fitted with a stainless steel sink unit and drainer, a wide range of eye and base level kitchen units and with worksurfaces over. An oven, hob and extractor hood is fitted and there is space for further domestic appliances. A cupboard houses the boiler.

From the kitchen you can access the living room which is divided into two separate spaces suitable for a dining space and a lounge area. Double glazed double doors open to the garden.

A staircase provides access to the first floor.

Bedroom one has a double glazed window with a view looking over the garden. Radiator.

Bedrooms two and three both have double glazed windows and radiator.

The bathroom is a white suite and comprises of a panel enclosed bath with a mixer tap and shower attachment, a low level WC and a wash hand basin. The walls are partly tiled and there is a radiator.

Outside to the rear and side is a generous size garden space that is largely lawned and is surrounded and inset with a variety of plants, bushes, shrubs and specimen trees. There is an outside store and a shed.



Services: All main services are connected.

Council tax: East Hants District Council, Band C, £2074.11

Contact Jacobs and Hunt to arrange your viewing. Available 7 days a week for your convenience.

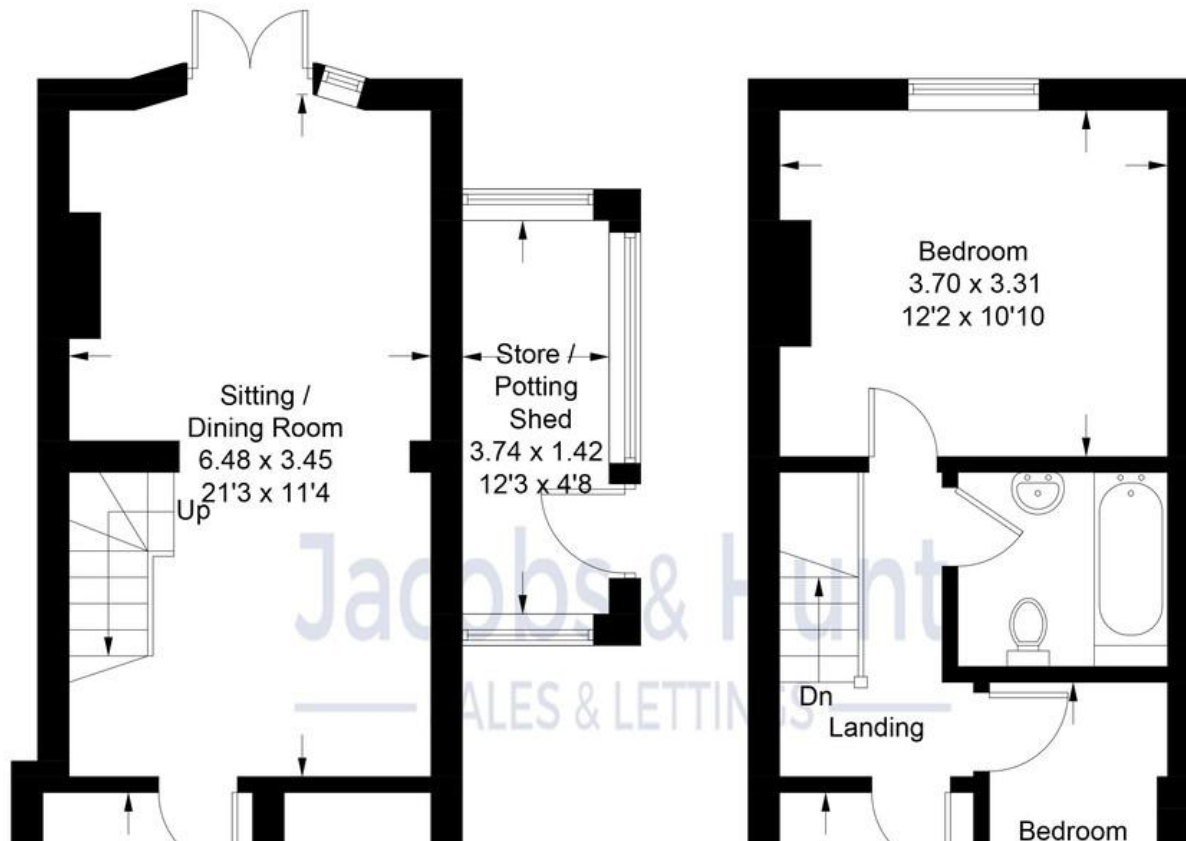


Tilmore Road, Petersfield

Approximate Gross Internal Area = 68.2 sq m / 734 sq ft

Outbuilding = 5.4 sq m / 58 sq ft

Total = 73.6 sq m / 792 sq ft



Score	Energy rating	Current	Potential
92+	A		113 A
81-91	B		
69-80	C		
55-68	D	67 D	
39-54	E		
21-38	F		

26 Lavant Street, Petersfield,
Hampshire, GU32 3EF

www.jacobshunt.co.uk
01730 262744
properties@jacobshunt.co.uk

Agents Note: Whilst every care has been taken to prepare these particulars, they are for guidance purposes only. All measurements are approximate and for general guidance purposes only and whilst every care has been taken to ensure their accuracy, they should not be relied upon and potential buyers/tenants are advised to recheck the measurements



Zoopla **rightmove** **onTheMarket**