



Judd Street, WC1H

£300,000

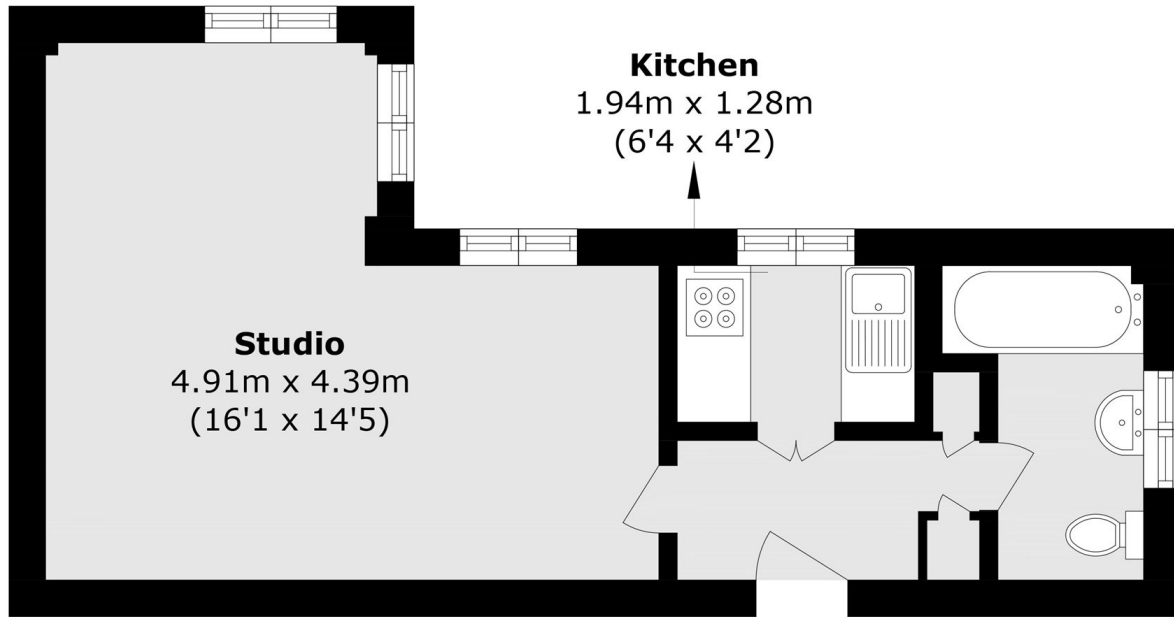
A bright studio apartment set within a well-preserved 1920s Art Deco building in the heart of Bloomsbury. The apartment retains many of its original period features and offers a well-proportioned layout, comprising a separate windowed kitchen, a family bathroom with a window, and a sleeping area.

Clare Court, offers vibrant central London living near King's Cross St Pancras. Moments from UCL, LSE, and King's College London, it's ideal for students and professionals seeking connectivity and culture.

Features

- Bright Studio Apartment
- Lift Access
- Wooden Flooring
- Concierge
- 49 year Lease
- No Onward Chain

Judd Street, London, WC1H



Total area (approx): 27.9 sq. m (300.3 sq. ft)