



**OFFICE HOURS:**

Monday to Friday	9 am	to	5 pm
Saturday	9 am	to	2 pm
Sunday and Bank Holidays	12 noon	to	2 pm

## 10 good reasons to choose DMA

- \* Open 7 days a week.
- \* Filey's longest established family run independent estate agency.
- \* Prompt efficient friendly service.
- \* 360° virtual tours and floor plans.
- \* Free advertising: no sale - no charge.
- \* Free no obligation market valuation.
- \* Free accompanied viewing.
- \* Dedicated sales progression.
- \* Prominent town centre location.
- \* Modern walk-round self selection display.

RESIDENTIAL SALES

# DMA ESTATE AGENTS

COMMERCIAL SALES

Proprietors: David Mansfield ATTON FNAEA.  
Samantha ADDISON  
[www.dmaestateagents.co.uk](http://www.dmaestateagents.co.uk)  
ESTABLISHED 1992



These particulars are intended only to give a fair description of the property, as a guide to prospective buyers. Accordingly a) their accuracy is not guaranteed and neither DMA Estate Agents nor the vendor(s) accept any liability in respect of their contents; b) they do not constitute an offer or contract of sale, and c) any prospective purchaser should satisfy themselves by inspection or otherwise as to the correctness of any statement or information in these particulars.

# DMA

## ESTATE AGENTS



11 DOLPHIN WAY, GRISTHORPE YO14 9PU



**Leasehold £70,000**

### FEATURES

- \* Ideal holiday home or investment property.
- \* To be used for holiday purposes and suitable for cash buyers only.
- \* Two bedroom brick built semi-detached holiday chalet.
- \* Located on Blue Dolphin Holiday Park.
- \* Upvc double glazed windows.
- \* Front garden.
- \* Driveway.
- \* Sold with no onward chain.
- \* EPC Rating: F.
- \* Viewing is highly recommended.

### ACCOMMODATION IN BRIEF

INTERNAL: Upvc Side Door to Lounge. Kitchen. Bathroom. Two Bedrooms.

OUTSIDE: Front garden. Drive to the side. Rear garden with decked area.

**26 Belle Vue Street, FILEY, North Yorks. YO14 9HY. Telephone: 01723 515527**  
[www.dmaestateagents.co.uk](http://www.dmaestateagents.co.uk) / [www.rightmove.co.uk](http://www.rightmove.co.uk)

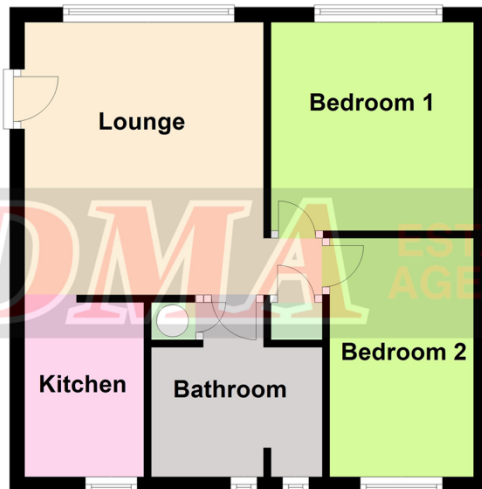


11 DOLPHIN WAY, GRISTHORPE

## Floor Plan:

### Ground Floor

Approx. 36.7 sq. metres (395.1 sq. feet)



Total area: approx. 36.7 sq. metres (395.1 sq. feet)

Please note this floor plan is only a guide and not to scale.  
Plan produced using PlanUp.

11 Dolphin Way, Gristhorpe

### Upvc Side Door to:

#### LOUNGE

3.66m x 3.20m (12'0" x 10'6")

Wall mounted electric fire. Built-in storage cupboard. **Upvc double glazed window with views over The Wolds.**



#### KITCHEN

2.36m x 1.57m (7'9" x 5'2")

Inset stainless steel sink and drainer. Modern base units with worktops over. Matching wall cupboards. Electric cooker point with stainless steel extractor hood. Provision for low level fridge. Tiled floor and walls. Upvc double glazed window.

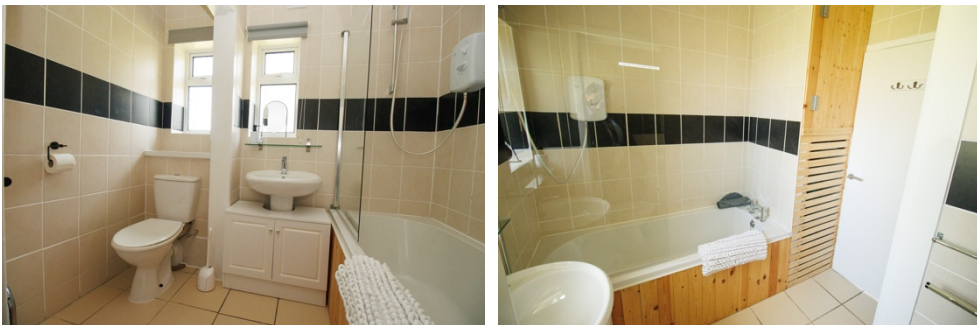
/ continued over

11 Dolphin Way, Gristhorpe - continued

## BATHROOM

2.36m x 2.26m (7'9" x 7'5")

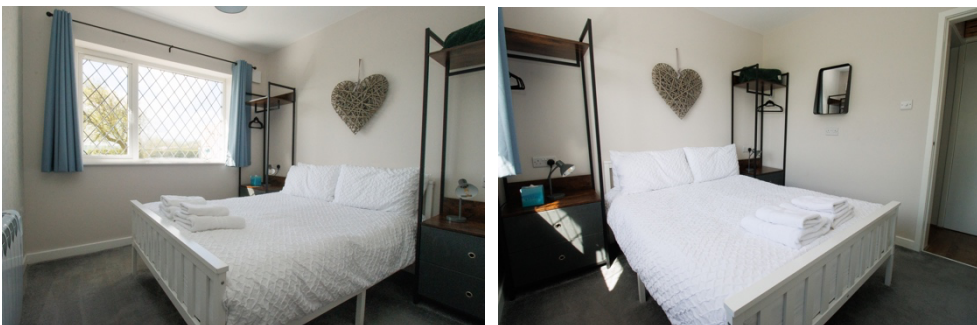
Bath with 'Triton Enrich' electric shower over and screen. Handbasin in vanity unit and wc. Electric heated towel radiator. Electric fan heater. Airing cupboard housing immersion heater. Tiled walls and floor. Two upvc double glazed windows.



## BEDROOM ONE

2.79m x 2.69m (9'2" x 8'10")

Electric radiator. Upvc double glazed window



## BEDROOM TWO

3.17m x 1.93m (10'5" x 6'4")

Electric radiator. Upvc double glazed window.



## OUTSIDE:

Front garden. Drive. Rear garden with decked patio area.



## TENURE:

Leasehold: 99 years from 1968.  
Ground Rent: £50.00 + VAT per annum.

**FOR HOLIDAY PURPOSE ONLY – WE UNDERSTAND FROM NORTH YORKSHIRE PLANNING DEPARTMENT THAT THIS PROPERTY MAY ONLY BE OCCUPIED FOR HOLIDAY USE AND CANNOT BE USED AS PERMANENT ACCOMMODATION.**

## LOCATION:

Gristhorpe is a small village lying just to the west of the A165 Scarborough to Bridlington road, approximately two miles from Filey.

## DIRECTIONS:

From Filey take the A165 road to Scarborough. Turn right at the roundabout signposted Blue Dolphin Holiday Camp and then take the second turning on the right into the holiday camp. Dolphin Way is immediately on the right and the chalet is located on the right hand side.

**Viewing strictly by appointment only through DMA Estate Agents**