

Foxhall



Estate Agents

625 Foxhall Road
Ipswich IP3 8ND

Unit 4, Ropes Drive
Kesgrave IP5 2FU

01473 721133

01473 613296

info@foxhallestateagents.co.uk

www.foxhallestateagents.co.uk



Kemball Street

East Ipswich, IP4 5EE

Guide price £225,000



3



1



2



C



Kemball Street

East Ipswich, IP4 5EE

Guide price £225,000



Front Garden

Hardstanding with drop kerb suitable for off road parking for one vehicle, access to front door and open porch with attractive tiles.

Entrance Hallway

Door into hallway, wood flooring, original corbels, radiator, stairs up and door to dining room.

Lounge

10'11" x 10'5" (3.33m x 3.18m)

Double glazed window to the front with fitted blinds, radiator, carpet flooring, coving and aerial point.

Dining Room

13'8" x 10'9" (4.17m x 3.28m)

Wood flooring, UPVC French doors to rear garden, archway through to kitchen, alcove under the stairs suitable for a study / office area, radiator and bespoke shelving, further archway through to the lounge.

Kitchen

9'11" x 8'10" (3.02m x 2.69m)

Comprising of wall and base units and cupboards and drawers under and work-surfaces over, stainless steel one and a half sink bowl drainer unit, freestanding oven and stainless steel extractor over, space for a full height fridge / freezer, space and plumbing for a washing machine, new double glazed window to side (fitted 11th May), splash-back tiling and vinyl flooring. Cupboard housing the wall mounted boiler which is regularly serviced.

Bathroom

8'5" x 5'10" (2.57m x 1.78m)

Modern bathroom with vanity wash hand basin unit incorporating a low flush W.C. with concealed back, panelled p shaped bath with fixed shower screen and

shower over, tiled walls, tiled floor, heated towel rail and extractor fan. Obscure double glazed window to rear.

Landing

Doors to bedrooms one, two and three and an airing cupboard with shelving, access to the loft.

Bedroom One

13'10" x 10'11" (4.22m x 3.33m)

Two double glazed windows to the front with fitted blinds, radiator and carpet flooring.

Bedroom Two

10'10" x 8'6" (3.30m x 2.59m)

Double glazed window to rear with fitted blinds, radiator and new carpet flooring fitted 19th April.

Bedroom Three

9'11" x 8'10" (3.02m x 2.69m)

Double glazed window to the rear, fitted blind, radiator and new carpet flooring.

Rear Garden

13'11" x 44'7" (4.260 x 13.6)

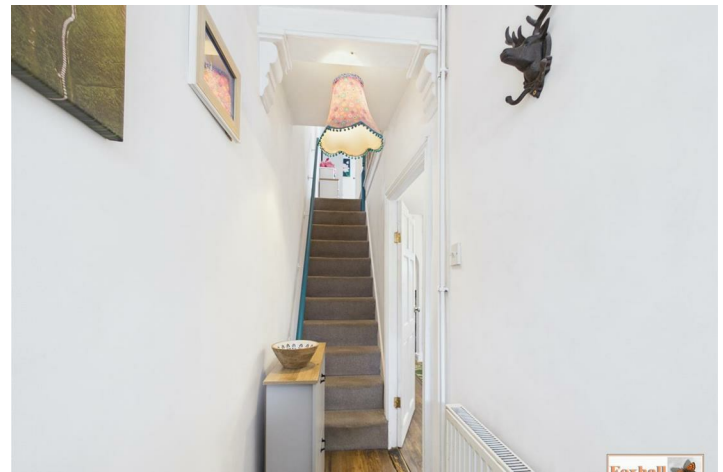
Pathway to the rear, pedestrian gate to the rear, small patio area suitable for bin and bike storage, shed to stay, mainly laid to lawn with flower borders with mature shrubs and bulbs, further patio area outside the rear access suitable for alfresco dining.

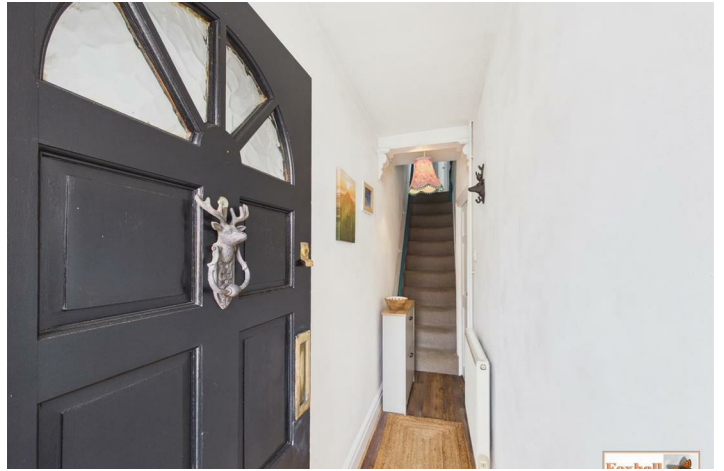
Agents Notes

Tenure - Freehold

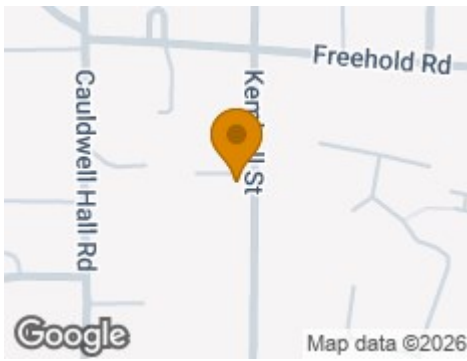
Council Tax Band - B







Road Map



Hybrid Map



Terrain Map



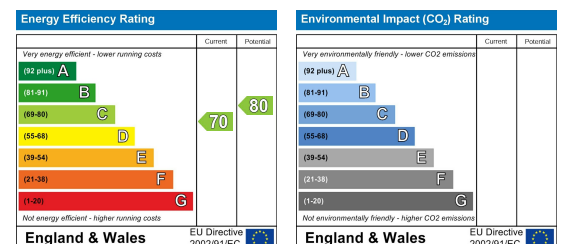
Floor Plan



Viewing

Please contact us on 01473 721133 if you wish to arrange a viewing appointment for this property or require further information.

Energy Efficiency Graph



These particulars, whilst believed to be accurate are set out as a general outline only for guidance and do not constitute any part of an offer or contract. Intending purchasers should not rely on them as statements of representation of fact, but must satisfy themselves by inspection or otherwise as to their accuracy. No person in this firm's employment has the authority to make or give any representation or warranty in respect of the property.