

Symonds  
& Sampson



# 79a Oliver House

Great Cranford Street, Poundbury, Dorchester, Dorset

# 79a Oliver

Great Cranford Street

Poundbury

Dorchester

Dorset DT1 3SQ

A beautifully designed 2 bedroom, 2 bathroom, ground floor apartment with lift to all floors and parking space, situated close to Queen Mother Square.



- Ground floor apartment with own entrance
  - Sitting/dining room
  - Two double bedroom
    - Two bathrooms
  - Allocated parking 2 cars
  - 10 year NHBC Warranty
- Leasehold with a 999 year lease
- Annual service charge £1358

Guide Price **£330,000**

Leasehold

Poundbury Sales  
01305 251154

[poundbury@symondsandsampson.co.uk](mailto:poundbury@symondsandsampson.co.uk)



## THE PROPERTY

Plot 79a is a ground floor apartment with attractive brick-faced elevations under a tiled roof. The accommodation comprising a sitting/dining room, separate kitchen, two bedrooms, two bathrooms and two parking spaces.

## ACCOMMODATION

The apartment is found on the ground floor and has its own private entrance; Accommodation consisting of an entrance hallway with a store cupboard and an airing cupboard. The door opens into a delightful dual aspect sitting/dining room. The kitchen is extensively fitted with an attractive range of wall and floor cupboards with a double electric oven, gas hob with extractor hood above, fridge/freezer, dishwasher and washing machine/dryer.

There are two double bedrooms, the principal bedroom enjoying an en-suite shower room. There is also a well-appointed family bathroom.

The property includes a 10 year NHBC warranty.

The drawings & photography and particulars are for illustrative purposes only and shall not form part of any contract.

## OUTSIDE

There is two allocated parking spaces.

## SITUATION

Poundbury is designed with a set of key human-centred principles - to put people before cars, integrated places of work with homes and invest in buildings of exceptionally high construction quality and aesthetic standards. Since breaking ground in 1993, the community has achieved worldwide acclaim from architects, town planners, academics, and house builders, both for its intelligent design and success in creating a highly desirable and diverse new community. Queen Mother Square is the centre of life in Poundbury, with its collection of independent shops - including a butcher and a Waitrose supermarket and The Duchess of Cornwall Inn. Smaller squares, beautiful gardens and wilder areas of parkland are woven into the fabric of Poundbury, including the formal gardens and expansive lawns of Pavilion Green stretching north of Royal Pavilion.

A short journey from both Dorchester South and Dorchester West stations, residents of Pavilion Green East are easily connected to the South West trains network, with direct trains into London Waterloo and Bristol Temple Meads. The A35 and A37 open up all of Dorset's wonderful landscape, which is recognised as an Area of Outstanding Natural Beauty, as well as providing easy access to its dramatic coastline from Lyme Regis and the Jurassic Coast to Corfe Castle and the Isle of Purbeck.

## SERVICES

Electricity, gas, water and mains drainage. Gas fired central heating.

Local Authority  
Dorset Council Tel: 01305 251010

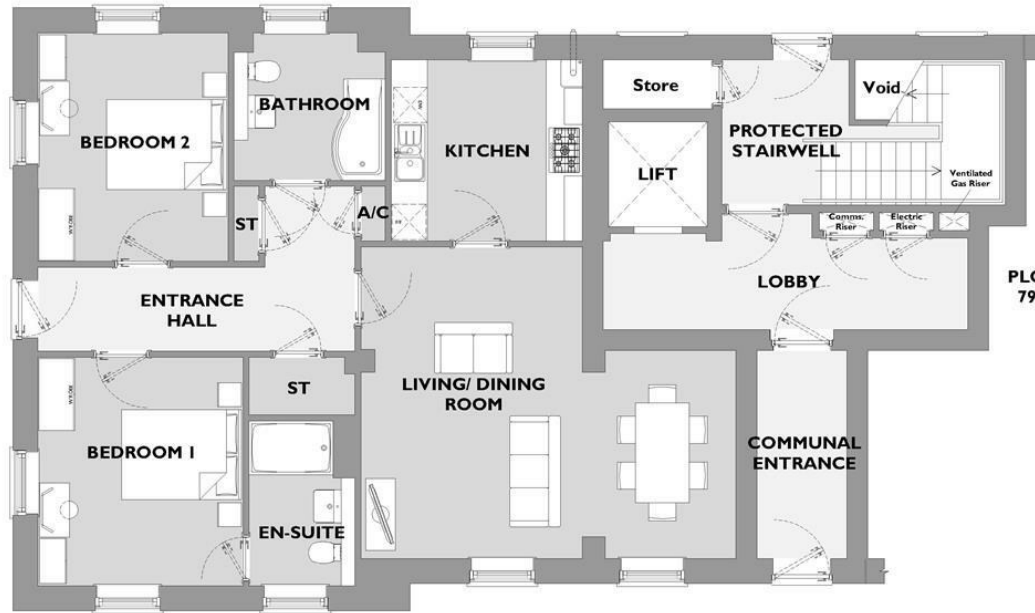
Council tax band: TBC

Tenure  
Leasehold  
We have been informed by the developers there will be a 999 year lease.  
Annual service charge of £1358



# PLOT 79A

TWO BEDROOM HOME



## GROUND FLOOR FLAT

Living Room/ Dining Room  
 3.69 x 5.20m (12'1 x 17'1 ft max) (Living Room)  
 2.56 x 3.47m (8'5 x 11'5 ft max) (Dining Room)

Kitchen  
 3.18 x 3.02m (10'5 x 9'11 ft max)

Bedroom 1  
 3.42 x 3.81m (11'3 x 12'6 ft max)

Bedroom 2  
 3.17 x 3.81m (10'5 x 12'6 ft max)

## GROUND FLOOR

Energy Efficiency Rating		Current	Potential
Very energy efficient - lower running costs			
(92 plus) A			
(81-91) B		84	84
(69-80) C			
(55-68) D			
(39-54) E			
(21-38) F			
(1-20) G			
Not energy efficient - higher running costs			
England & Wales		EU Directive 2002/91/EC	



Poundbury/pgs/20.5.26



01305 251154

poundbury@symondsandsampson.co.uk  
 Symonds & Sampson LLP  
 Arch Point House, 7 Queen Mother Square,  
 Poundbury, Dorset DT1 3BY



**Important Notice:** Symonds & Sampson LLP and their clients give notice that they have no authority to make or give any representations or warranties regarding the property. These particulars do not form part of any offer or contract and must not be relied upon as statements of fact. Some descriptions and images may have been AI-assisted; while reviewed for accuracy, interested parties should verify key details through inspection or by contacting our agents.

All measurements and distances are approximate. Text, photographs, and plans are for guidance only and may not be comprehensive. It should not be assumed that the property has all necessary planning or regulatory consents, and no services, equipment, or facilities have been tested. No investigations have been made into pollution or contamination; purchasers must make their own enquiries. The property is sold subject to all existing wayleaves, easements, and rights of way (public or private), whether mentioned or not. Vendors are not required to define such rights.