



*jordan fishwick*

Peveril Gardens Newtown, Disley Stockport



## Peveril Gardens Newtown, Disley Stockport SK12 2RG

£159,950



### The Property

At the head of a cul-de-sac within a popular, small, modern development in Newtown Disley, a beautifully presented ground floor apartment. Boasting forward views towards Kinder Scout and surrounded by lawns and mature trees, this two bedroom property would be perfect for many buyers. Comprising: entrance porch, living room, fitted kitchen, two bedrooms and a re-fitted shower room. Pvc double glazing, gas central heating and ample storage. Driveway parking and communal grounds. Viewing essential.



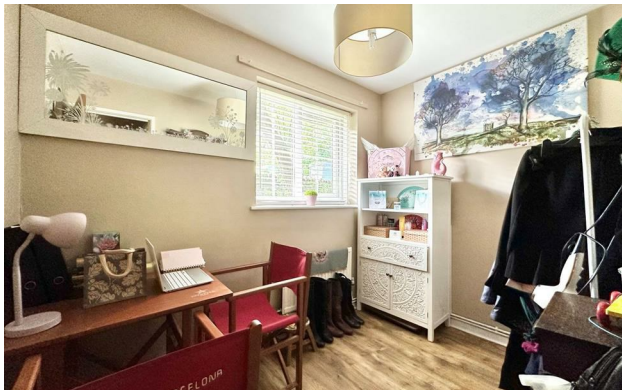
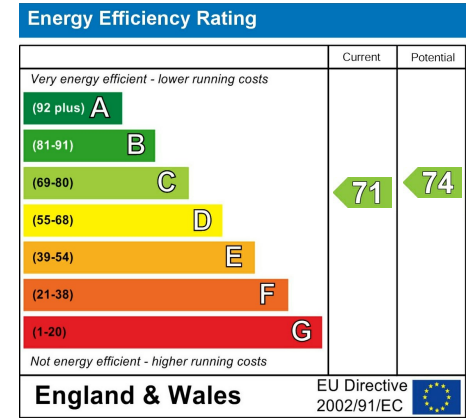
- Ground Floor Apartment
- Two Bedrooms
- Part of a Select Popular Development
- Convenient Position For Rail Links
- Driveway Parking and Communal Grounds
- Beautifully Presented Throughout
- Re-Fitted Shower Room
- Pvc Double Glazing, Gas Central Heating and Ample Storage

**Postcode** SK12 2RG

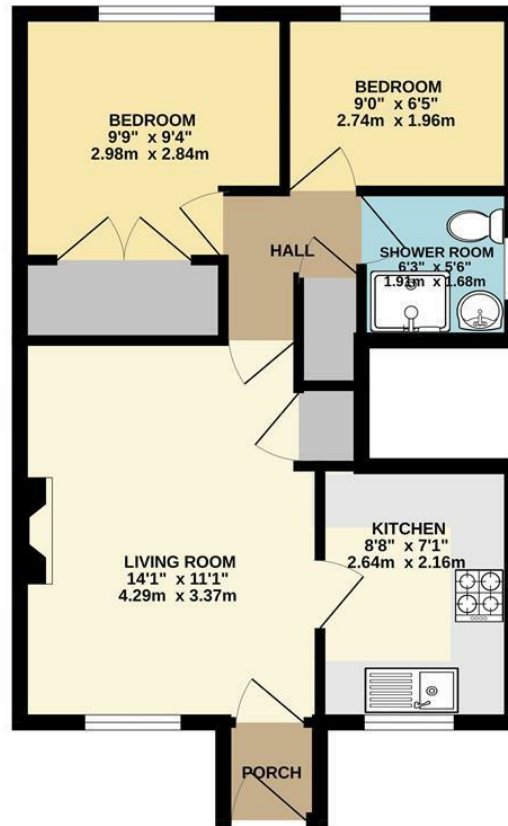
**EPC Rating** C

**Local Authority** Cheshire East

**Council Tax** B



GROUND FLOOR  
458 sq.ft. (42.6 sq.m.) approx.



TOTAL FLOOR AREA : 458 sq.ft. (42.6 sq.m.) approx.

Whilst every attempt has been made to ensure the accuracy of the floorplan contained here, measurements of doors, windows, rooms and any other items are approximate and no responsibility is taken for any error, omission or mis-statement. This plan is for illustrative purposes only and should be used as such by any prospective purchaser. The services, systems and appliances shown have not been tested and no guarantee as to their operability or efficiency can be given.  
Made with Metropix ©2026



These particulars are believed to be accurate but they are not guaranteed and do not form a contract. Neither Jordan Fishwick nor the vendor or lessor accept any responsibility in respect of these particulars, which are not intended to be statements or representations of fact and any intending purchaser or lessee must satisfy himself by inspection or otherwise as to the correctness of each of the statements contained in these particulars. Any floorplans on this brochure are for illustrative purposes only and are not necessarily to scale.

Offices at: Chorlton, Didsbury, Disley, Hale, Glossop, Macclesfield, Manchester Deansgate, Manchester Whitworth Street, New Mills, Sale, Wilmslow and Withington

14 Market St, Disley, Cheshire, Stockport SK12 2AA

01663 767878

disley@jordanfishwick.co.uk

www.jordanfishwick.co.uk