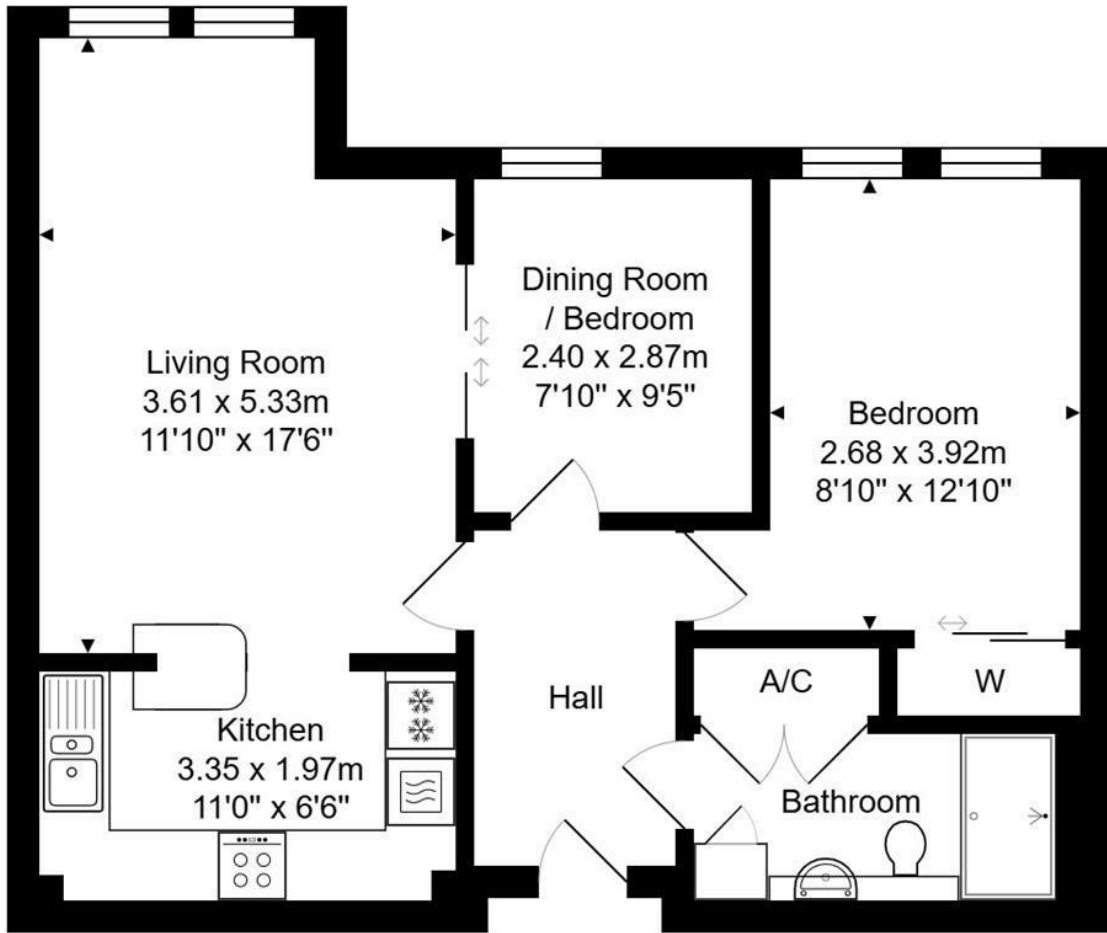




**20 The Ropewalk
Bradford-On-Avon, BA15 1LQ**

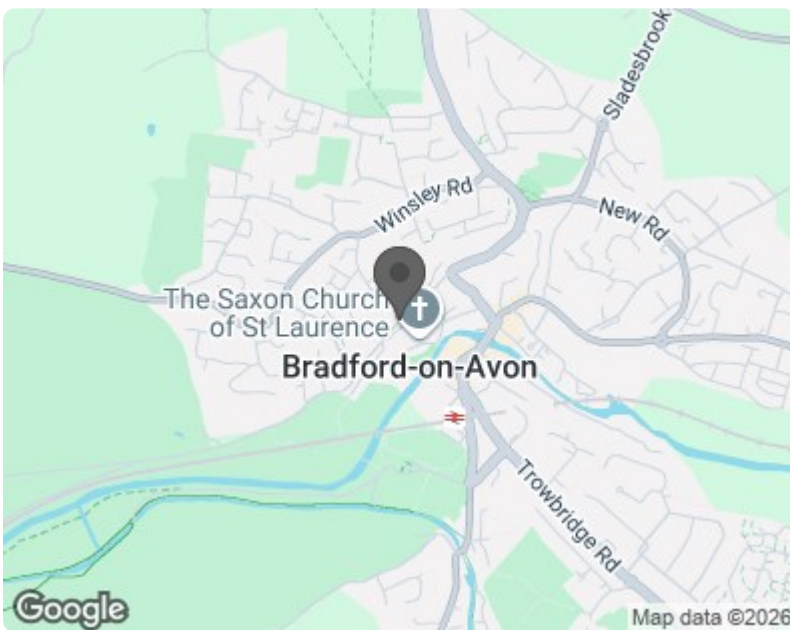
Guide Price £170,000

**A TWO BEDROOM, FIRST FLOOR RETIREMENT APARTMENT WITH LIFT, A PLEASANT OUTLOOK,
COMMUNAL GARDENS & COMMUNAL FACILITIES.**



Area: 58.4 m² ... 629 ft²

Whilst every attempt has been made to ensure the accuracy of the floorplan contained here, measurements of doors, windows, rooms and any other items are approximate and no responsibility is taken for any error, omission or mis-statement. This plan is purely for illustrative purposes only and should be used as such by any prospective purchaser. Area includes internal and external wall thickness www.epcassessments.co.uk



Energy Efficiency Rating		Current	Potential
Very energy efficient - lower running costs	(92 plus) A		
(81-91) B			
(69-80) C			
(55-68) D			
(39-54) E			
(21-38) F			
(1-20) G			
Not energy efficient - higher running costs			
England & Wales		81	83
	EU Directive 2002/91/EC		

Environmental Impact (CO ₂) Rating		Current	Potential
Very environmentally friendly - lower CO ₂ emissions	(92 plus) A		
(81-91) B			
(69-80) C			
(55-68) D			
(39-54) E			
(21-38) F			
(1-20) G			
Not environmentally friendly - higher CO ₂ emissions			
England & Wales			
	EU Directive 2002/91/EC		