



10 Greenside Court, 54 Marine Drive East, Barton

Asking Price £550,000

Mitchells
1963 — TODAY



*10 Greenside Court 54
Marine Drive East
Barton on Sea
New Milton
Hampshire
BH25 7DX*

A luxury, high quality apartment situated in a prestigious modern development adjoining Barton on Sea Golf Course, enjoying stunning, far reaching views over the course to the sea, the Isle of Wight, and the Needles in the distance. Other features of this fine property include a large balcony that takes full advantage of the views, accommodation set over three storeys, two bath/shower rooms, and a carport. An internal viewing is highly recommended to fully appreciate the views on offer.

- 2025 Maintenance Charge: £2,500 PA
- Entrance Hall
- Sitting/Dining Room
- Kitchen
- Utility Room
- Two Double Bedrooms
- En-Suite Shower Room
- Bathroom
- Balcony
- Carport



The Property

Entrance hall with a private ground floor entrance and a stairway leading to the first floor.

Hallway with stairs to the second floor and an understairs storage cupboard.

Superb large sitting/dining room with a marble effect fireplace with a stone backing and hearth, UPVC double glazed sliding doors opening onto the balcony, and stunning far reaching views over the golf course, the sea, the Needles, and the Isle of Wight.

Kitchen fitted with a range of oak effect units, a contrasting worktop, and an inset one and a half bowl sink unit with a mixer tap. Integrated appliances include an electric oven, gas hob, extractor, fridge, separate freezer, and dishwasher. There is a larder cupboard, under cupboard lighting, and lovely views over the golf course.

Large balcony with decking style flooring, ample space for numerous chairs, and providing fantastic panoramic views.

Useful separate utility room with an integrated washer/dryer, storage units, and a large store cupboard.

First floor double bedroom with built-in wardrobes and an adjacent bathroom fitted with a white suite comprising a panelled bath with a mixer tap and shower attachment, a glass shower screen, a wash basin with storage beneath, a WC, and an extractor fan.

Particularly spacious second floor bedroom suite offering the finest views from the apartment, with an excellent range of built-in wardrobes, a double aspect, and an en-suite shower room fitted with a white suite comprising a fully tiled shower cubicle, a wash basin with storage beneath, a bidet, and a double glazed Velux window.





Gardens & Grounds

Greenside Court stands in extremely well maintained communal gardens and grounds, the upkeep of which is paid to out of the annual maintenance charge.

There is a private carport with lockable storage to the rear, as well as additional areas for residents' and visitors' parking.

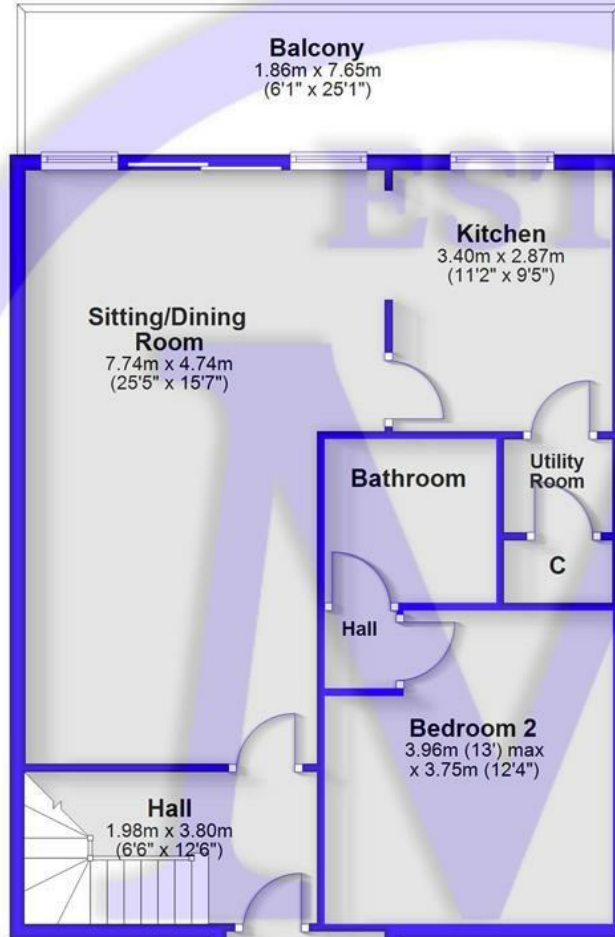


Services

Mains gas, electric, water and sewerage
Council Tax Band F
Energy Performance Rating C

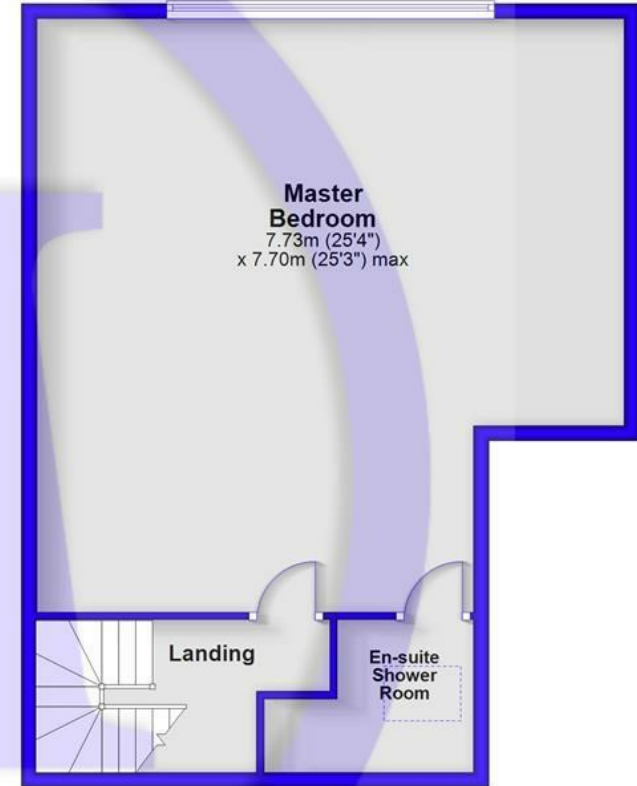
First Floor

Approx. 85.0 sq. metres (915.2 sq. feet)



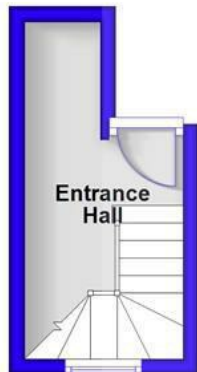
Second Floor

Approx. 66.6 sq. metres (717.2 sq. feet)



Ground Floor

Approx. 7.4 sq. metres (80.0 sq. feet)



Landing
4.40m x 2.07m
(14'5" x 6'9")

Total area: approx. 159.1 sq. metres (1712.5 sq. feet)



Situation

From Mitchells, turn right at the traffic lights and proceed along Station Road. Take the second turning on the right into Barton Court Road. At the crossroads, continue straight across into Barton Court Avenue. Upon reaching the seafront, turn left into Marine Drive East and continue to the end, where Greenside Court will be found on the left hand side.



Mitchells.uk.com
info@mitchells.uk.com
01425 616411

Centenary Buildings
8-10 Old Milton Road
New Milton
Hampshire
BH25 6DT

Mitchells
1963 — TODAY

