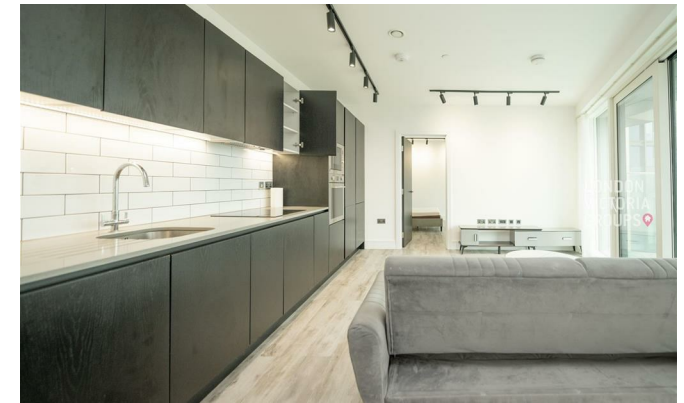


**LONDON  
VICTORIA  
GROUPS** 



## Icon Tower, 8 Portal Way

, London W3 6DU

- 24-hour Concierge
- Co-working Space
- Communal Garden
- Close to North Acton Station/Acton Main Line Station
- CTB-E
- State-of-the-art Gym
- Landscaped rooftop gardens
- London Skyline Views
- EPC-B

**£2,700 PCM**

Local Authority **Ealing**  
Council Tax Band **E**  
EPC Rating **B**



**London Office Office**  
Spaces Victoria, 25 Wilton Road, Pimlico,  
London, SW1V 1LW

**Contact**  
020 3084 3094  
XL@londonvictoriagroups.co.uk  
www.londonvictoriagroups.co.uk

Agents Note: Whilst every care has been taken to prepare these particulars, they are for guidance purposes only. All measurements are approximate and for general guidance purposes only and whilst every care has been taken to ensure accuracy, they should not be relied upon and potential buyers/tenants are advised to recheck the measurements.

