



The Pantiles, Bushey Heath, WD23

Bushey

£379,950

Bedrooms: 2

Bathrooms: 1

Receptions: 1

A bright and spacious TWO DOUBLE BEDROOM GROUND FLOOR MAISONNETTE WITH ACCESS TO GARDEN situated in a sought after development in the heart of Bushey Heath, conveniently located and within walking distance to all local shopping and transport facilities. The property is being offered in good decorative order and benefits from: Double Glazed Windows, Gas Fired Heating To Radiators, Underfloor Heating, Reception Room With Access To Communal Garden, Kitchen, Two Double Bedrooms, Bathroom, Communal Grounds, Parking.

CHAIN FREE



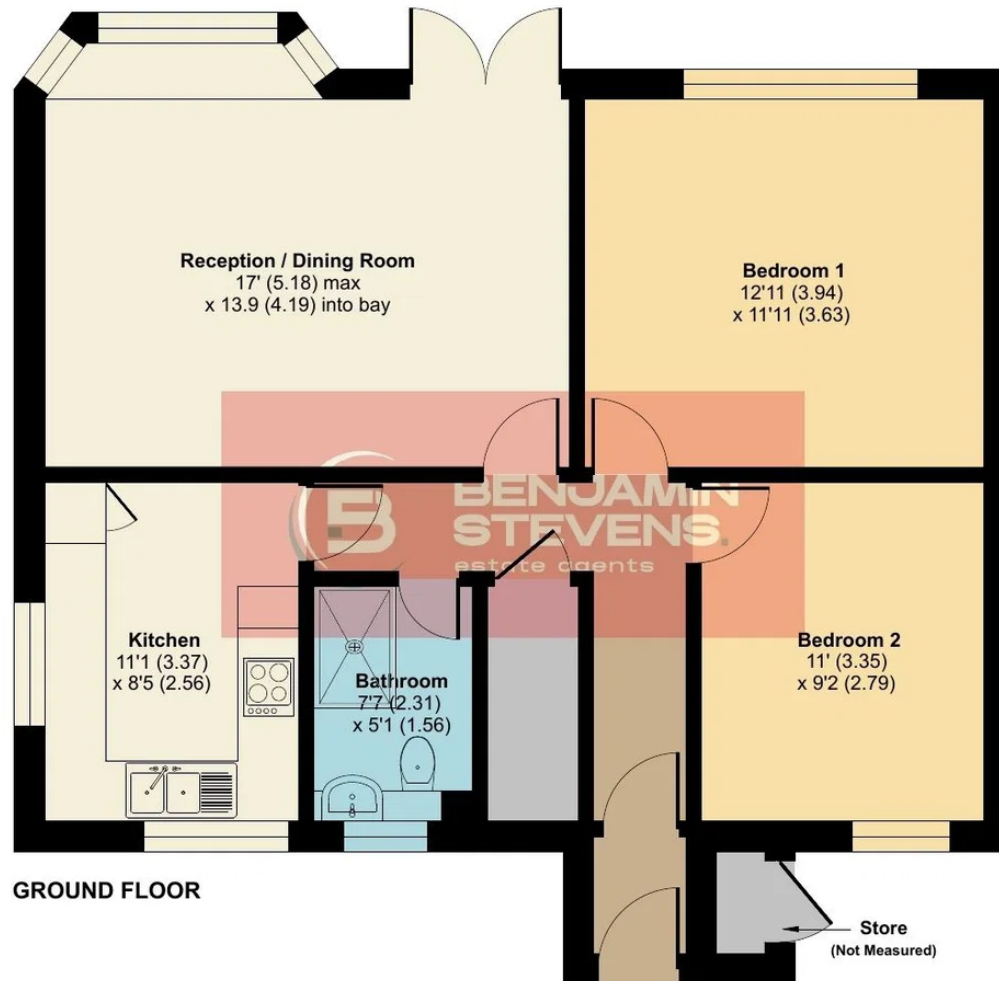




The Pantiles, Bushey Heath, Bushey, WD23

Approximate Area = 738 sq ft / 68.5 sq m (excludes store)

For identification only - Not to scale



Floor plan produced in accordance with RICS Property Measurement 2nd Edition, Incorporating International Property Measurement Standards (IPMS2 Residential). © nctechcom 2026. Produced for Benjamin Stevens. REF: 1480839