



£599,995

Perpins Road, Eltham, SE9 2LF

Chattertons

EST 1893

This is an end of terraced house presented in excellent condition and thoughtfully extended to offer family size accommodation. On the ground floor is a good size lounge, modern kitchen, large conservatory with access to the outside, bedroom 4 with direct access to the garden and wc. On the first floor are 3 bedrooms, family bathroom and study which could also be great as a babies room.

The garden is well secluded and to the front is a private driveway providing off road parking and direct access to a garage which is reduced in size but allows for storage.

Located in a residential area close by to the vast open space of Avery Hill Park and nearby to New Eltham mainline and Falconwood mainline stations.



Extended end of terraced house
Great layout
4/5 bedrooms
Modern kitchen and bathroom
Ground floor wc

Entrance hall

Radiator, carpet

Lounge 15' 1" x 12' 4" (4.59m x 3.76m)

Double glazed window, radiator, carpet

Kitchen 15' 4" x 8' 1" (4.67m x 2.46m)

Double glazed window, fitted wall and base units with stainless steel single drainer sink unit with mixer taps, integrated oven and hob with extractor hood, integrated fridge freezer, plumbing for washing machine and dishwasher, vertical radiator, tiled floor

Conservatory 14' 1" x 10' 6" (4.29m x 3.20m)

Double glazed doors to the garden, radiator, tiled floor

Inner hallway

Large under stairs storage cupboard

Ground floor wc

Wc and sink

Bedroom 4 12' 2" x 9' 5" (3.71m x 2.87m)

Double glazed french doors to the garden, vertical radiator, wood flooring

Stairs to the first floor

Carpet, cupboard

Garage storage
Driveway providing off road parking
Secluded garden
Close to Avery Hill Park
Excellent condition throughout

Bedroom 1 18' 4" x 10' 8" (5.58m x 3.25m)

2 leaded light double glazed windows, double radiator, acoustic wall, integrated wardrobes, carpet

Bedroom 2 11' 6" x 9' 11" (3.50m x 3.02m)

Leaded light double glazed window, radiator, laminate flooring

Bedroom 3 11' 11" x 6' 2" (3.63m x 1.88m)

Leaded light double glazed window, vertical radiator, wood flooring

Study or bedroom 5' 8' 10" x 6' 2" (2.69m x 1.88m)

Leaded light double glazed window, vertical radiator, oak flooring

Bathroom 8' 4" x 5' 7" (2.54m x 1.70m)

2 frosted double glazed windows, panelled bath with mixer taps and shower with screen, wall hung wash hand basin with mixer taps, low level wc, chrome heated towel rail, tiled floor and walls, extractor fan

Rear garden 62' 4" x 31' 2" (18.98m x 9.49m)

Patio, laid to lawn, timber built shed, flowers and plants

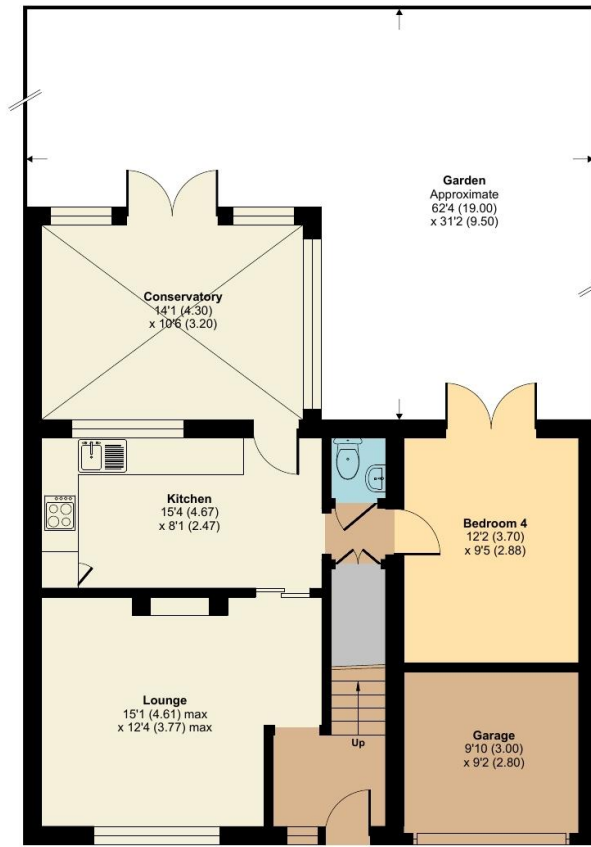
Garage storage 9' 10" x 9' 2" (2.99m x 2.79m)

With shutter

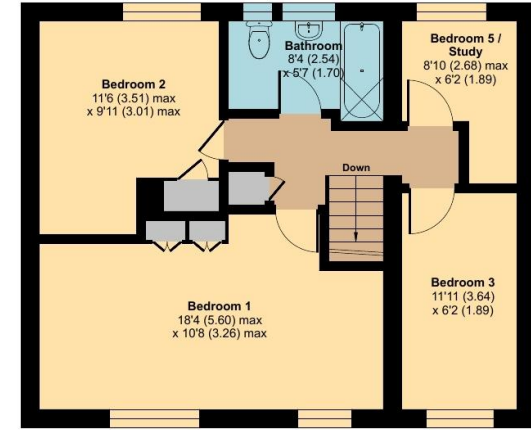
Driveway

Providing off road parking





GROUND FLOOR



FIRST FLOOR

Perpins Road, London, SE9

Approximate Area = 1219 sq ft / 113.2 sq m

Garage = 79 sq ft / 7.3 sq m

Total = 1298 sq ft / 120.6 sq m

For identification only - Not to scale



Floor plan produced in accordance with RICS Property Measurement 2nd Edition, incorporating International Property Measurement Standards (IPMS2 Residential). © nichecom 2026. Produced for Chattertons Estate Agents Ltd. REF: 1437816

All dimensions are approximate and are quoted for guidance only, their accuracy cannot be confirmed. Reference to appliances and/or services does not imply they are necessarily in working order or fit for the purpose. Buyers are advised to obtain verification from their solicitors as to the freehold/leasehold status of the property, the position regarding any fixtures and fittings and where the property has been extended / converted as to Planning approval and Building Regulation compliance. These particulars do not constitute or form part of an offer or contract, nor may they be regarded as representations. All interested parties must themselves verify their accuracy. Where a room layout is included this is for general guidance only, it is not to scale and its accuracy cannot be confirmed. Ref Code:

020 8859 4000

405 Footscray Road
New Eltham SE9 3UL

sales.neweltham@chattertons.org.uk

Chattertons

EST 1893