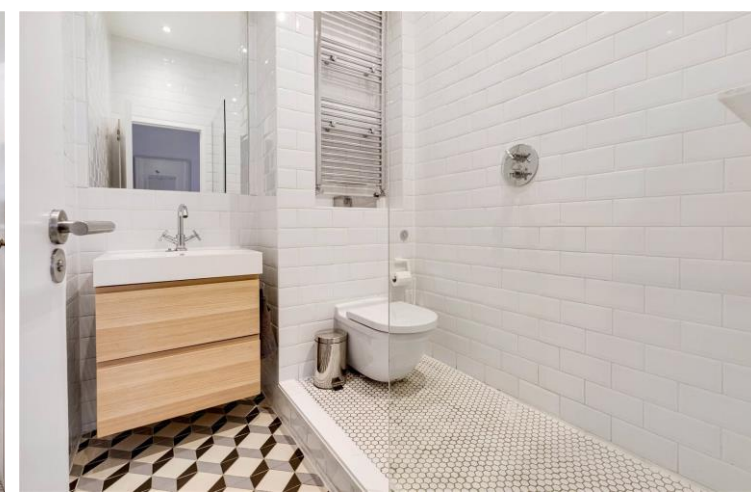




St Ann's Street  
London, SW1P

CHESTERTONS





**\*SHORT LET\*\***The apartment's layout includes a reception room seamlessly connected to an open-plan kitchen and dining area, a generously sized double bedroom with built-in wardrobes, a well-appointed bathroom, and a single bedroom.

- Stylish Two Bedroom
- Open Plan Kitchen
- Ample Storage
- Modern Furnishings

### £5,000 pcm

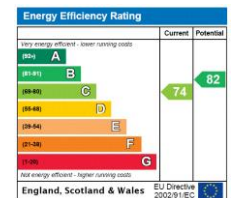
Additional tenant charges apply (fees apply to non-AST tenancies only)

Tenancy Agreement Fee: £300

References per Tenant/Guarantor: £60

Inventory check (approx. £100 – £250 inc. VAT)

[chestertons.co.uk/property-to-rent/applicable-fees](http://chestertons.co.uk/property-to-rent/applicable-fees)



**Deposit Required:** 4 weeks  
**Local Authority:** Westminster  
**Council Tax Band:** G  
**EPC Rating:** C  
**Furnished**

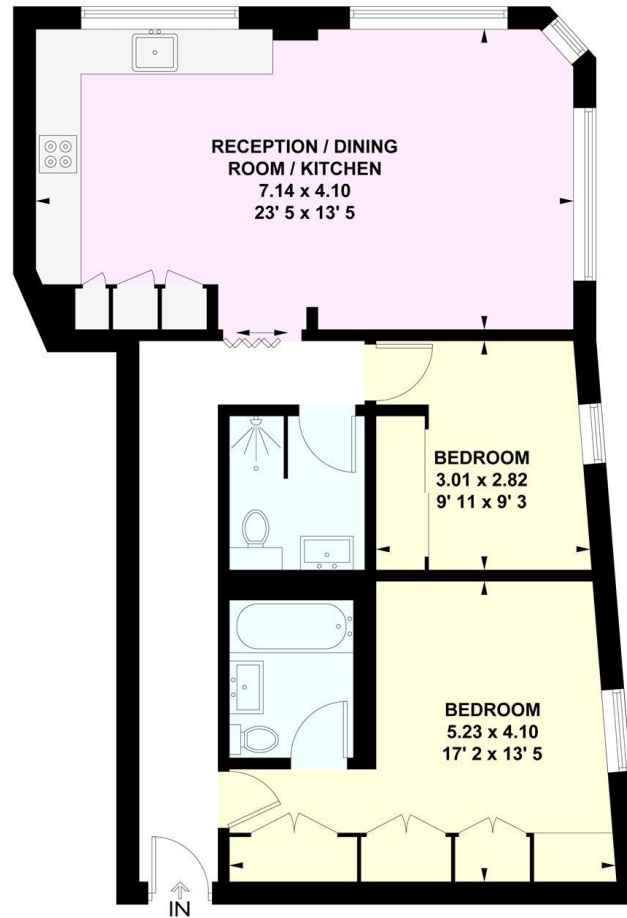
### Chestertons Westminster & Pimlico Lettings

105 Wilton Road  
 London  
 SW1V 1DZ

[westminsterlettingsusers@chestertons.co.uk](mailto:westminsterlettingsusers@chestertons.co.uk)  
 02030408220  
[chestertons.co.uk](http://chestertons.co.uk)

# St. Ann's Street

Approximate Gross Internal Area = 786 sq ft / 73 sq m



First Floor

This plan is not to scale and must be used as layout guidance only. All measurements and areas are approximate and should not be relied upon to provide accurate information. This plan must not be relied upon when making property valuations, design considerations or any other such relevant decisions. We accept no responsibility or liability (whether in contract, tort or otherwise) in relation to any loss whatsoever arising from or in connection with any use of this plan or the adequacy, accuracy or completeness of it or any information within it.

Chesterton UK Services Limited trading as Chestertons for themselves and for the vendor of this property whose agents they are, give notice that (i) these particulars do not constitute any part of an offer or contract, (ii) all statements contained within these particulars are made without responsibility on the part of Chestertons or the vendor, (iii) whilst made in good faith, none of the statements contained within these particulars are to be relied upon as a statement or representation of fact, (iv) any intending purchasers must satisfy themselves by inspection or otherwise as to the correctness of each of the statements contained within these particulars, (v) the vendor does not make or give either Chestertons or any person in their employment any authority to make or give representation or warranty whatsoever in relation to this property. Wide angle lenses may be used. ©Copyright Chestertons | Chesterton Global Ltd | Registered Office 40 Connaught Street, Hyde Park, London W2 2AB Registered Company Number 05334580.



This paper is  
100% recyclable