



## Canoe Walk, E14

£519 Per week

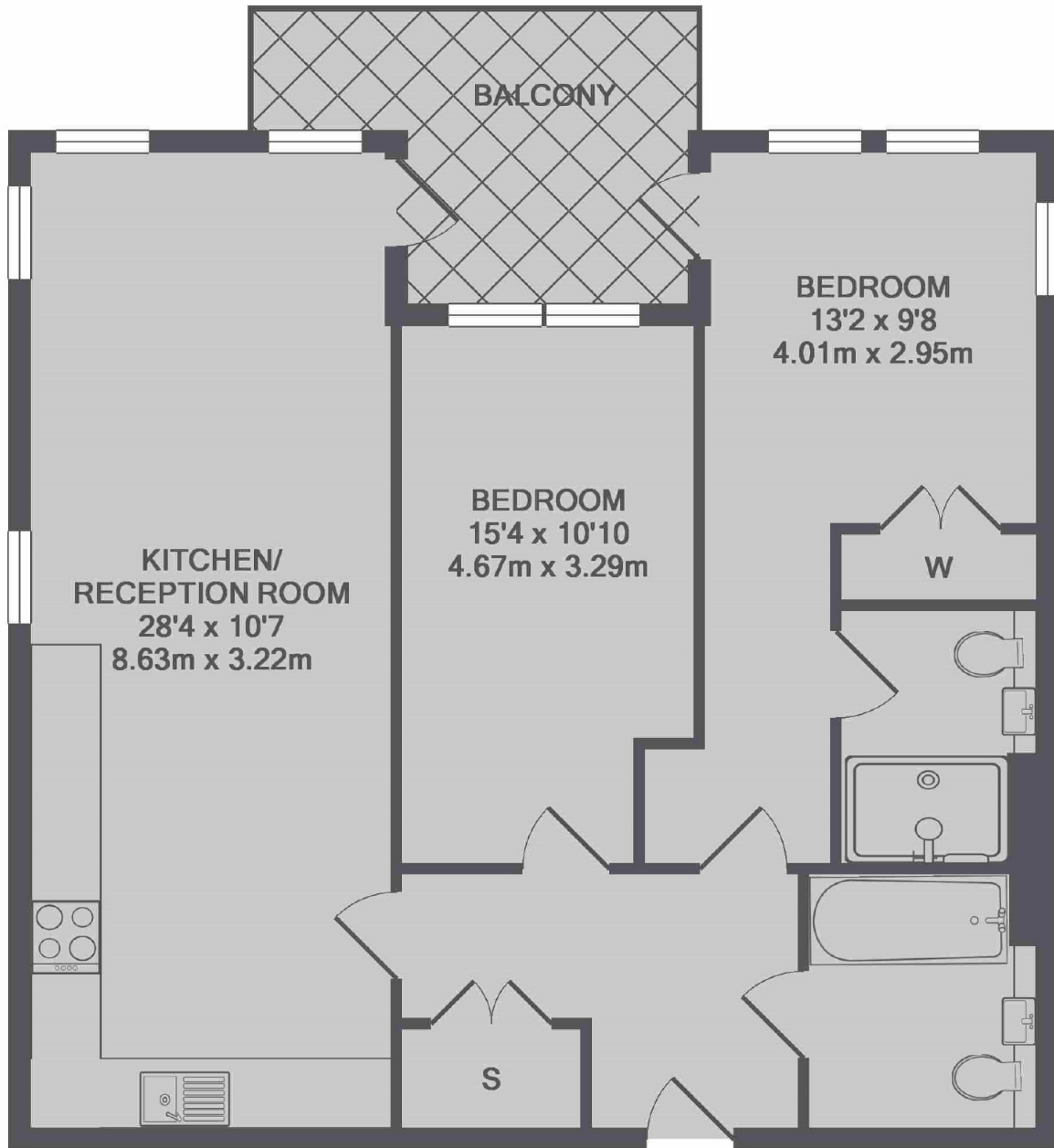
A spacious two bedroom apartment situated on the Limehouse Cut. This bright apartment has an open plan reception room with wooden floors, two double bedrooms with two bathrooms and a balcony overlooking the canal.

Rope Court is within walking distance to Limehouse DLR and C2C station providing easy access to Canary Wharf & The City.

### Features

- Two Double Bedrooms
- Two Bathrooms
- Wooden Floors
- High Spec
- Balcony
- Quite Location

# Canoe Walk, London, E14



TOTAL APPROX. FLOOR AREA 784 SQ.FT. (72.8 SQ.M.)