



**Torrington Avenue, Tile Hill
Coventry CV4 9HJ
Open To Offers £115,000**

Leasehold - Coventry City Council Band: A - EPC: C

*** CHAIN FREE PROPERTY WITH A COMPLETE LEGAL PACK, COMPLETE WITHIN 4 WEEKS ***

Pointons are pleased to bring to market this large first floor flat on Torrington Avenue, Tile Hill, Coventry, situated on a quiet road set amongst communal greens and within close proximity to Warwick University.

The property itself comprises of a large reception room, kitchen, two double bedrooms and a family bathroom. The property also benefits from gas central heating and double glazing.

The legal pack is prepared and ready to go, offering a fantastic opportunity for a buyer to complete within as little as 4 weeks.

The flat is leasehold, with a current lease term of approximately 81 years.

INVESTORS

The property currently has a sitting tenant in place, providing an immediate return on completion. Similar properties in the area are currently achieving between £900-£1000 PCM, offering a potential yield of approximately 9.39%.



Entrance Hall

6'5" x 3'4" (1.95m x 1.02m)

Main door to enter apartment. Central heating thermostat, intercom, door to:

Utility

6'5" x 4'8" (1.95m x 1.42m)

Plumbing for washing machine, space for fridge/freezer, door to:

Kitchen

9'0" x 8'4" (2.75m x 2.54m)

Fitted with a matching range of base and eye level units with worktop space over, 1+1/2 bowl stainless steel sink with mixer tap, integrated fridge, fitted electric oven, gas hob with extractor hood over, window to side, Storage cupboard,

Living Room

16'3" x 13'3" (4.96m x 4.05m)

Two windows to side, fireplace, radiator, door to:

Bedroom 1

13'0" x 10'0" (3.95m x 3.06m)

Window to side, window to rear, radiator, built in wardrobes.

Bedroom 2

9'5" x 11'7" (2.86m x 3.54m)

Window to side, radiator, door to:

Bathroom

6'3" x 8'4" (1.90m x 2.54m)

Three piece suite with panelled bath, with mixer tap and electric shower, pedestal wash basin, WC, window to side, tiling to all walls with ceramic tiled flooring.

Good to know

Vendor position; Rented with fixed tenancy

Leasehold; 83 Years remaining

Ground Rent: £10 Per Annum.

Service Charge: £644.54 Per Annum.

Floor area: 702.10sqft

Energy efficiency rating: C

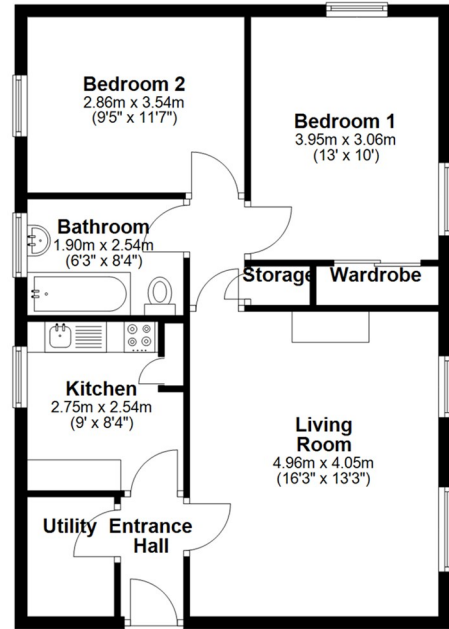
Council tax band: A

Year built: 1950-1966

Disclaimer

Please Note: All fixtures & Fittings are excluded unless detailed in these particulars. None of the equipment mentioned in these particulars has been tested; purchasers should ensure the working order and general condition of any such items.

Ground Floor



Energy Efficiency Rating		Current	Potential
Very energy efficient - lower running costs			
(92 plus) A			
(81-91) B			
(69-80) C			
(55-68) D			
(39-54) E			
(21-38) F			
(1-20) G			
Not energy efficient - higher running costs			
England & Wales		EU Directive 2002/91/EC	

Environmental Impact (CO ₂) Rating		Current	Potential
Very environmentally friendly - lower CO ₂ emissions			
(92 plus) A			
(81-91) B			
(69-80) C			
(55-68) D			
(39-54) E			
(21-38) F			
(1-20) G			
Not environmentally friendly - higher CO ₂ emissions			
England & Wales		EU Directive 2002/91/EC	



COVENTRY, CV1 2NT
 coventry@pointons-group.com
 024 7710 333
 Company No: 7359350

NUNEATON, CV11 4AL
 nuneaton@pointons-group.com
 024 7637 3300
 Company No: 6743033

ATHERSTONE, CV9 1AU
 atherstone@pointons-group.com
 01827 711911
 Company No: 81323250

