



ONLINE ENQUIRIES ONLY

order to be considered for a viewing, please contact us online through this listing.

you must complete the short questionnaire emailed with your enquiry before a viewing can be scheduled.

12 Cardigan Place

, Norwich, NR2 4QS

£550 Per Calendar Month



Bedroom in this four-bedroom professional house share in the desirable NR2 area of Norwich offers convenient city centre living. With all bills included and a furnished SINGLE OCCUPANCY available now, this property is ideal for working professionals.

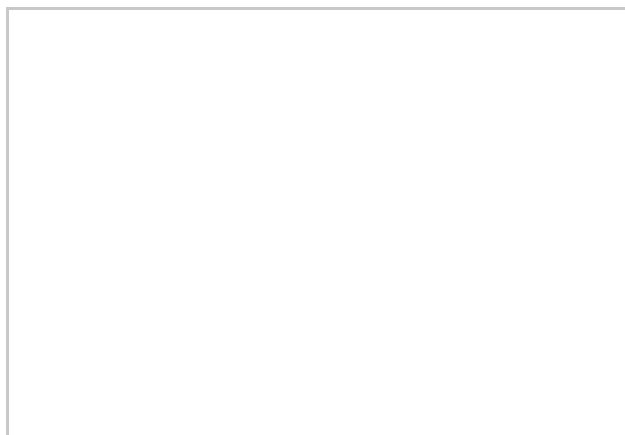
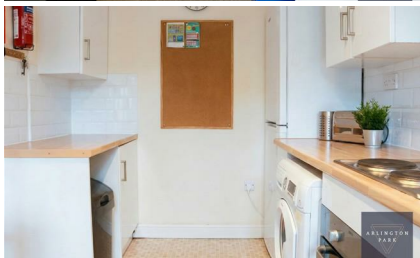
- SINGLE OCCUPANCY



Room available to rent - Single Bedroom - A fully furnished single bedroom. Available from 27th February 2025. SINGLE OCCUPANCY

This well-presented four-bedroom house share is situated in the highly sought-after NR2 area of Norwich, just a short walk from the vibrant city centre. Perfect for professionals, this property offers comfortable and convenient living with all bills included (gas, electricity, water, council tax, communal TV licence, and internet).

The house boasts a modern communal kitchen equipped with all necessary appliances, a shared lounge area perfect for relaxation, a main bathroom, and an additional WC.



These particulars, whilst believed to be accurate are set out as a general outline only for guidance and do not constitute any part of an offer or contract. Intending purchasers should not rely on them as statements of representation of fact, but must satisfy themselves by inspection or otherwise as to their accuracy. No person in this firm's employment has the authority to make or give any representation or warranty in respect of the property.



| Energy Efficiency Rating | | Current | Potential |
|---|---|-------------------------|-----------|
| Very energy efficient - lower running costs | | | |
| (92 plus) | A | | |
| (81-91) | B | | |
| (69-80) | C | | |
| (55-68) | D | | |
| (39-54) | E | | |
| (21-38) | F | | |
| (1-20) | G | | |
| Not energy efficient - higher running costs | | | |
| | | 72 | |
| England & Wales | | EU Directive 2002/91/EC | |