

Kitchen / Reception Room
14'9" x 27'2"

Bedroom
8'4" x 15'3"

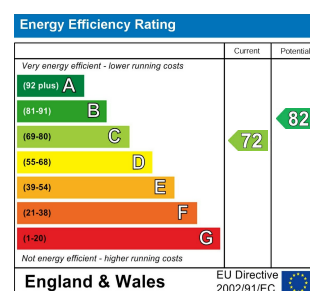
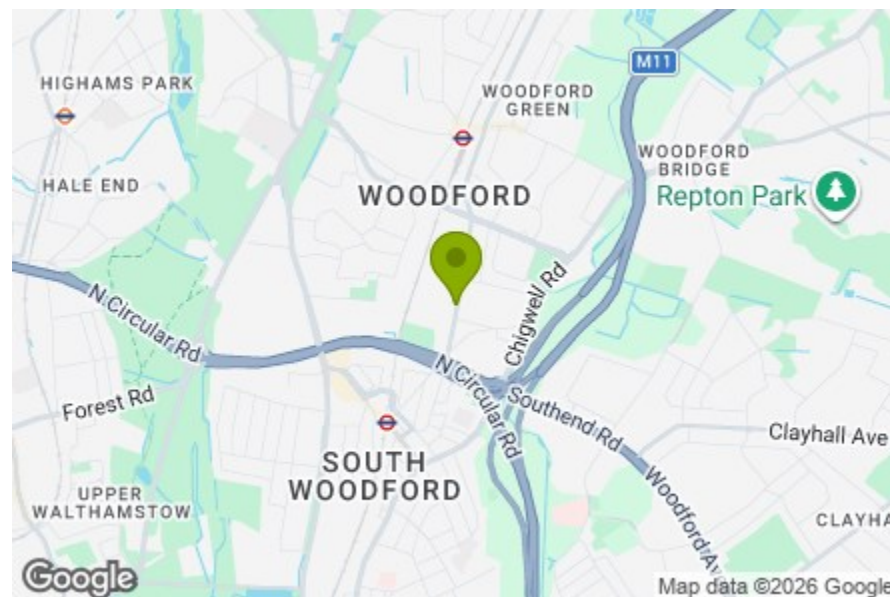
Bedroom
8'3" x 11'5"

Shower Room
5'10" x 7'9"

Bedroom
8'4" x 17'1"

Ensuite
5'10" x 9'7"

Garden
15'1" x 22'7"



ST. BARNABAS ROAD, WOODFORD GREEN Offers In Excess Of £600,000 Freehold 3 Bed House



Features:

- Three Bedroom House
- End of Terrace
- Two Bathrooms
- Private Driveway
- West Facing Garden + Roof Terrace
- Open Plan Living/ Entertaining Space
- Well Presented & Maintained
- Bright & Airy
- Walking Distance to South Woodford Station
- Close to Elmhurst Gardens

An artfully arranged, three bedroom, two bathroom contemporary end terrace laid out across three bright and airy storeys with private driveway, garden and roof terrace. All just moments from Elmhurst Gardens and the social hub of George Lane.

Perfect for a morning run or evening stroll, Elmhurst Gardens is just a couple of minutes away. You'll also find tennis courts and children's playgrounds.

E11, E7, E12 & E15
hello11@stowbrothers.com
0203 397 2222

E4 & N17
hello4@stowbrothers.com
0203 369 6444

E17 & E10
hello17@stowbrothers.com
0203 397 9797

E18 & IG8
hello18@stowbrothers.com
0203 369 1818

E8, E9, E5, N16, E3 & E2
hellohackney@stowbrothers.com
0208 520 3077

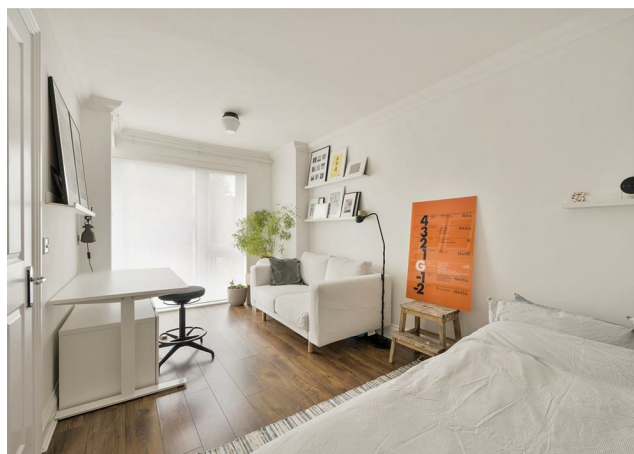
New Homes
newhomes@stowbrothers.com
0203 325 7227

Investment & Development
id@stowbrothers.com
0208 520 6220

Property Maintenance
propertymanagement@stowbrothers.com
0203 325 7228

STOWBROTHERS.COM
@STOWBROTHERS

REQUEST A VIEWING
0203 3691818



IF YOU LIVED HERE...

First stop will be your entirely open plan ground floor, dual aspect and coming in at over 350 square feet. Your sleek kitchen sits to the front, smartly decked out in white cabinets and dark quartz-style counters. Cream contemporary flagstones give way to smooth engineered hardwood underfoot as you move into the lounge area, bathed in light from the sliding patio doors. Step out here for your garden, a lovely secluded courtyard surrounded by brick walls, thriving foliage and timber fencing.

Upstairs your first two bedrooms are both smart, bright, sizeable doubles, with more hardwood floors and designer flourishes, the principal sleeper to the front even has its own modest balcony. Your family bathroom completes the storey, tiled from top to toe in large format smoky grey and home to a walk in rainfall shower. Upstairs again, and your loft suite features a large double sleeper, air conditioning, boutique ensuite bathroom with double ended tub and of course that charming roof terrace, a tranquil spot with leafy treetop views.

Outside and as well as the plentiful greenery that surrounds you, you have the

local social hub of George Lane just a half mile away on foot. Here you'll find all your day to day amenities, from pharmacies to supermarkets, as well as a broad choice of cafes, gastropubs and restaurants, including one of the capital's three much-loved Bobo & Wild locations, specialists in coffee, brunch and cocktails. For film buffs, Woodford's art deco Odeon cinema is just a twenty minute walk.

WHAT ELSE?

- South Woodford tube is around a ten minute walk. From here the Central line will get you directly to Liverpool Street in sixteen minutes, or Tottenham Court Road in twenty five, for speedy door to door connections to the City and West End.

- If you really want to stretch your legs, the endless greenery of Roding Valley Park is less than a half mile away. From here you can wander North or South to your heart's content.

- Local schools are impressive, with five 'Outstanding' primary/secondaries all within a twenty minute walk. The 'Outstanding' Woodbridge High School is just a third of a mile on foot from your new front door.



A WORD FROM THE OWNER...

"I love the natural light and roof terrace. The neighbours are friendly and the location is very handy for shops and travelling by bus, tube and car."

REQUEST A VIEWING
0203 3691818

FOLLOW US ➔ @STOWBROTHERS
STOWBROTHERS.COM