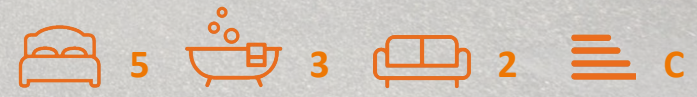




67 Mead Way
Coulston, CR5 1PQ

Price Guide £875,000



67 Mead Way Coulsdon, CR5 1PQ

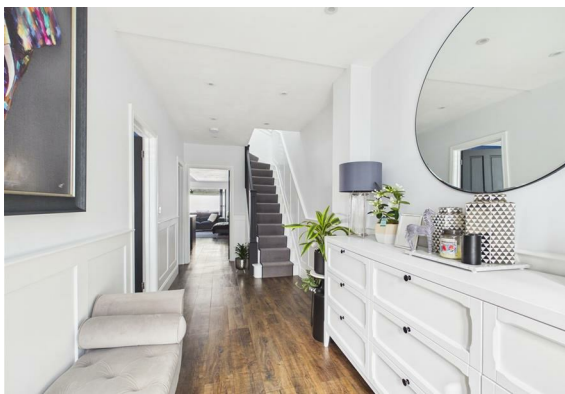
Price Guide £875,000-£900,000.

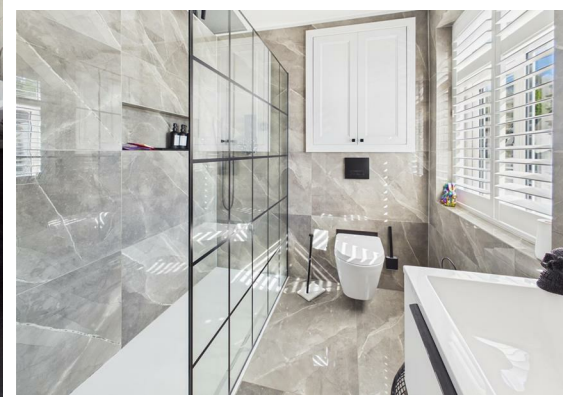
Nestled on Mead Way in Coulsdon, this stunning five-bedroom detached house offers a unique blend of modern living and picturesque views across Farthing Downs. Originally a three-bedroom property, it has been thoughtfully transformed into a spacious family home, making it a rare find in today's market.

As you step inside, the entrance hall welcomes you with a sense of elegance and style. The ground floor boasts an impressive open-plan kitchen-dining-family room, perfect for entertaining and family gatherings. Additionally, there is a formal lounge, a convenient utility room, and a well-placed w.c. Ascending to the first floor, you will discover a feature landing leading to the master bedroom, which includes a contemporary en-suite shower room. Three further bedrooms and a family bathroom complete this level, ensuring ample space for family and guests alike. The staircase continues to the crowning jewel of the home—bedroom five. This delightful room offers breathtaking views of the garden and features a luxurious walk-in en-suite shower room with a dedicated make-up area.

The rear garden is a true sanctuary, designed over several tiers to provide both relaxation spaces and areas for family play, catering to a variety of needs. With parking available for two vehicles, this property combines convenience with comfort.

Having been meticulously upgraded by its current owners, this home is a must-see. A viewing is essential to fully appreciate the charm and sophistication it has to offer. Do not miss the opportunity to make this exceptional property your own. Call now to arrange a viewing.





Entrance Hall

Living Room

W.C

Open plan Kitchen-Family-Ding Room

Utility Room

Stairs to

First Floor landing

Bedroom 1

En-suite Shower Room

Bedroom 2

Bedroom 3

Bedroom 4

Family Bathroom

Stairs to Main bedroom (bedroom 5)

Bedroom 5

En-suite Shower room with Make up area.

Rear Garden

Side access

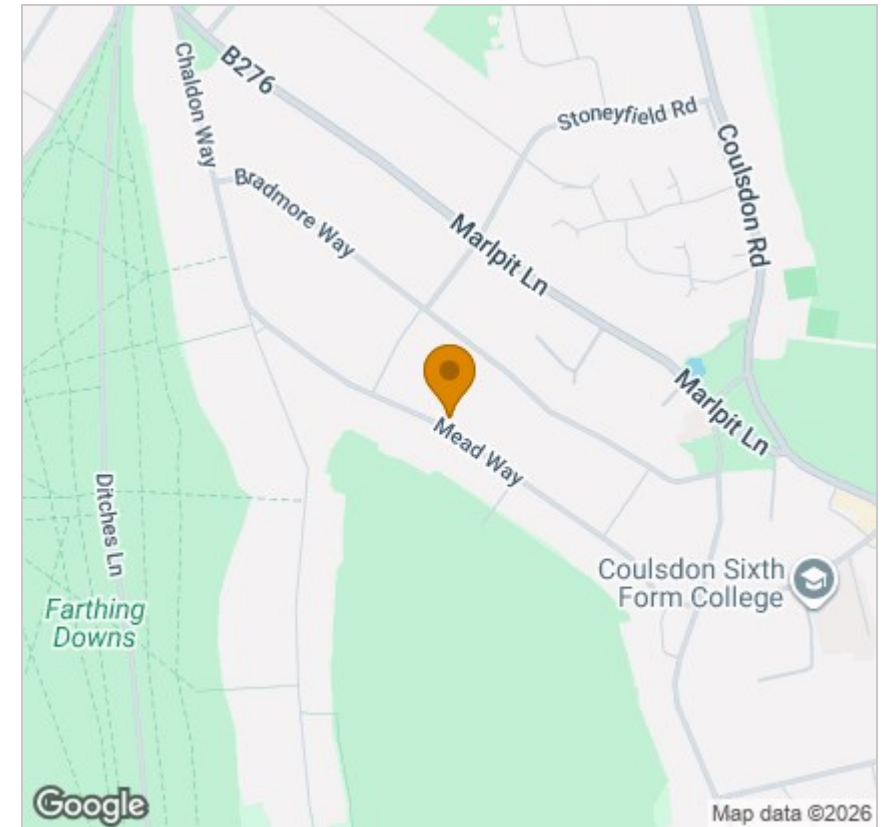
Driveway to front

Parking for two cars

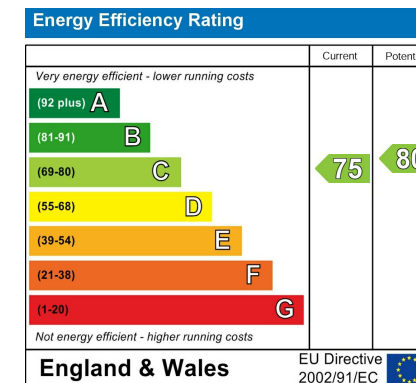
Floor Plan



Area Map



Energy Efficiency Graph



Viewing

Please contact our Coulsdon Sales Office on 0208 763 8878 if you wish to arrange a viewing appointment for this property or require further information.



147 Brighton Road,
 Coulsdon,
 Surrey
 CR5 2NJ
 Tel: 020 8763 8878
 Email: sales@danieladamsestateagents.co.uk
 www.danieladamsestateagents.co.uk