



18 Carwardine Field, Gloucester, GL4 5TX

Offers Over £425,000

Executive recently renovated detached family home occupies a prominent corner plot, just a stone's throw from the local shopping parade, two excellent primary schools & good senior and grammar schools. This property is perfect for those seeking a blend of comfort and convenience.

Upon entering, you are greeted by a spacious entrance hall that features clever storage solutions, setting the tone for the rest of the home. The through lounge is a standout feature, bathed in natural light, creating a warm and inviting atmosphere for family gatherings or entertaining guests.

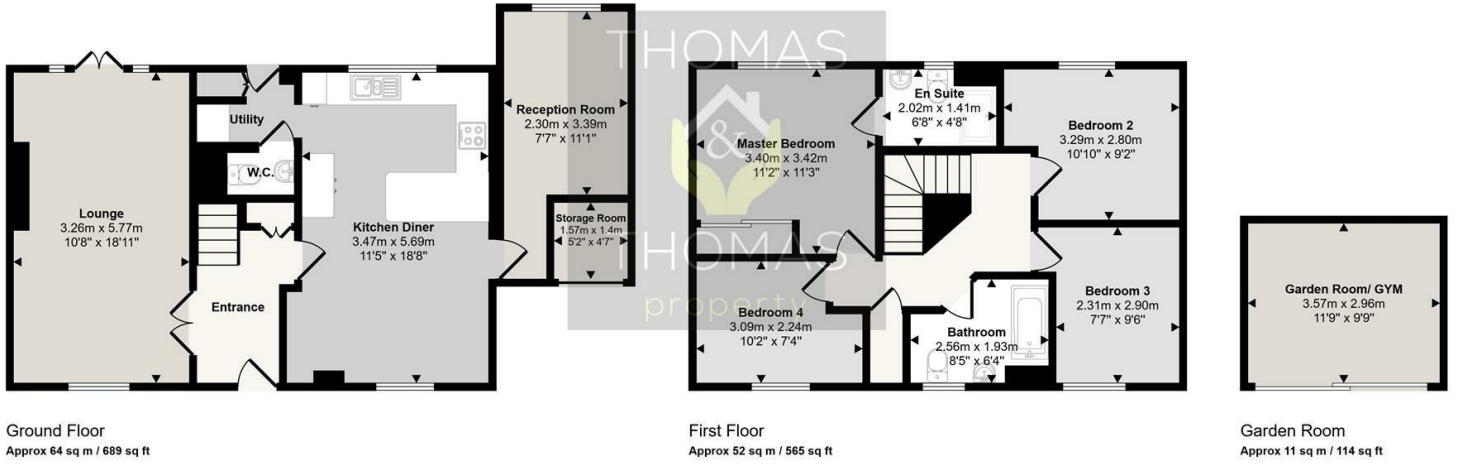
The heart of this home is undoubtedly the newly open-plan fitted kitchen diner, which boasts a breakfast bar, herringbone flooring and appliances, utility & wc, making it an ideal space for both cooking and casual dining. This layout encourages family interaction and provides a perfect setting for everyday living.

The wrap-around landing leads to four generously sized bedrooms, serviced by a modern family bathroom & en-suit to master complements the bedrooms, providing a stylish and functional space for relaxation.

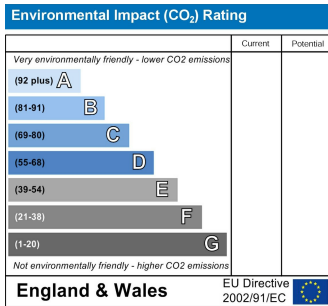
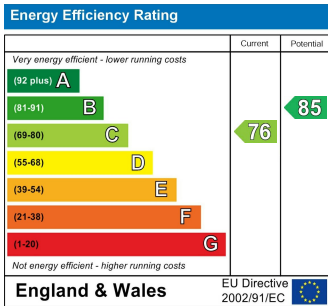
Outside, the property offers driveway & block paved parking, an enclosed, low-maintenance walled garden, complete with a newly installed astro lawn & decking area that connects the home with an outside garden room which is currently being used as an office space/Gym.

- Executive detached family home occupies a prominent corner plot
- Entrance hall that features clever storage solutions
- Through lounge bathed in natural light that includes media centre
- Open-plan newly fitted kitchen diner, which boasts a breakfast bar, utility & Wc
- Four generously sized bedrooms serviced by family bathroom & en-suit
- Low-maintenance walled garden, complete with lawn, decking and outside garden room
- Extremely motivated sellers that have found an onward property they would like to purchase

Approx Gross Internal Area  
127 sq m / 1368 sq ft



This floorplan is only for illustrative purposes and is not to scale. Measurements of rooms, doors, windows, and any items are approximate and no responsibility is taken for any error, omission or mis-statement. Icons of items such as bathroom suites are representations only and may not look like the real items. Made with Made Snappy 360.



These particulars, whilst believed to be accurate are set out as a general outline only for guidance and do not constitute any part of an offer or contract. Intending purchasers should not rely on them as statements of representation of fact, but must satisfy themselves by inspection or otherwise as to their accuracy. No person in this firm's employment has the authority to make or give any representation or warranty in respect of the property.