



## Whitworth House

Guide Price £140,000 to £150,000

- Attic Space
- Spacious Lounge/Diner
- Family Shower Room
- Two Double Bedrooms
- Short Walk to Tredegar Park
- Excellent Transport Links
- Allocated Parking
- EPC Rating: C



2 1 1

**Pinkmove**

01633 746088  
team@pinkmove.co.uk





## About the property

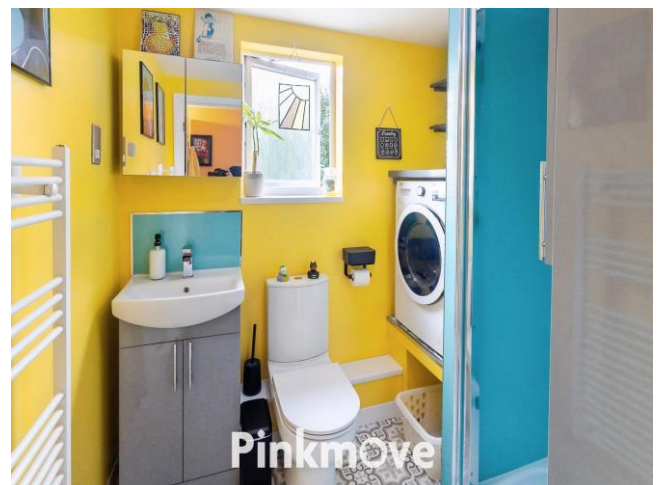
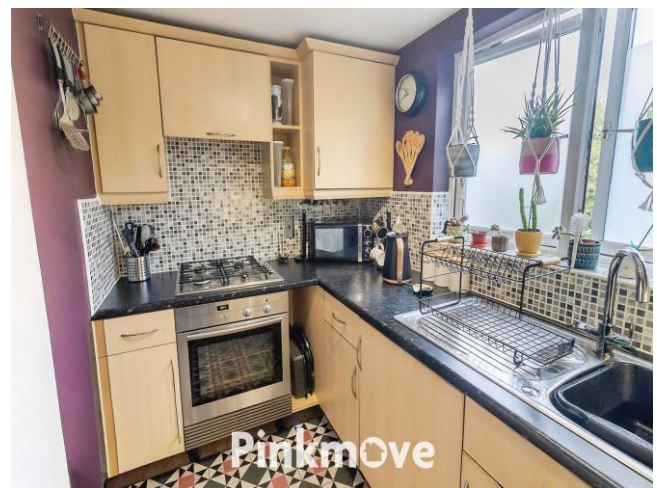
Located in the sought-after Golden Mile View development in Newport, this well-presented two-bedroom flat offers a smart and practical layout, ideal for modern living.

The property opens into a central hallway, with a stylish shower room and well-equipped kitchen to the left. To the right are two spacious double bedrooms, while the rear hosts a combined living and dining room—perfect for relaxing or entertaining.

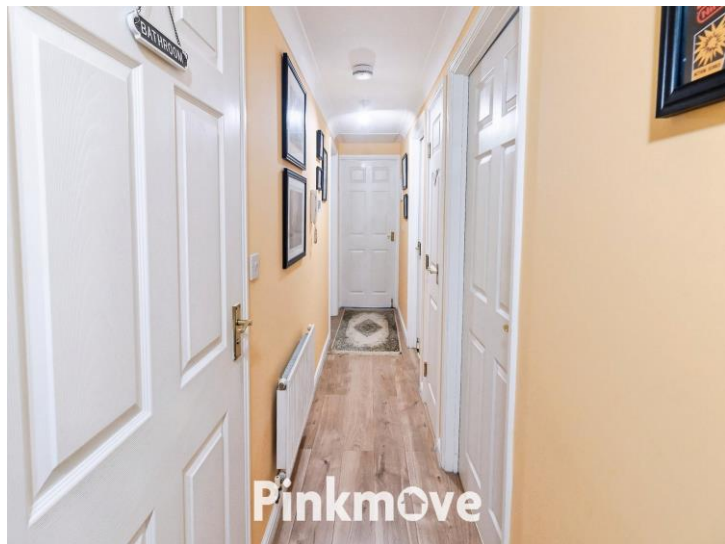
The flat benefits from one allocated parking space, plus visitor parking.

Golden Mile View is a peaceful residential area with excellent transport links. Pye Corner station is just 0.67 km away, and Rogerstone station is approximately 2.8 km, offering direct services to Cardiff. The M4 (Junction 28) is also easily accessible.

Families will appreciate nearby schools such as Glasllwch Primary, and local amenities including shops, cafés, and supermarkets are all within easy reach. For those who enjoy the outdoors, Tredegar Park is easily accessible on foot, offering scenic walking routes and green open spaces ideal for leisure and exercise.







## Accommodation

### Lounge/Diner

10' 1" x 19' 11" ( 3.07m x 6.07m )

### Kitchen

10' 5" x 5' 9" ( 3.17m x 1.75m )

### Shower Room

7' 1" x 5' 9" ( 2.16m x 1.75m )

### Bedroom 1

10' 4" x 10' 5" ( 3.15m x 3.17m )

### Bedroom 2

9' 4" x 10' 5" ( 2.84m x 3.17m )

01633 746088

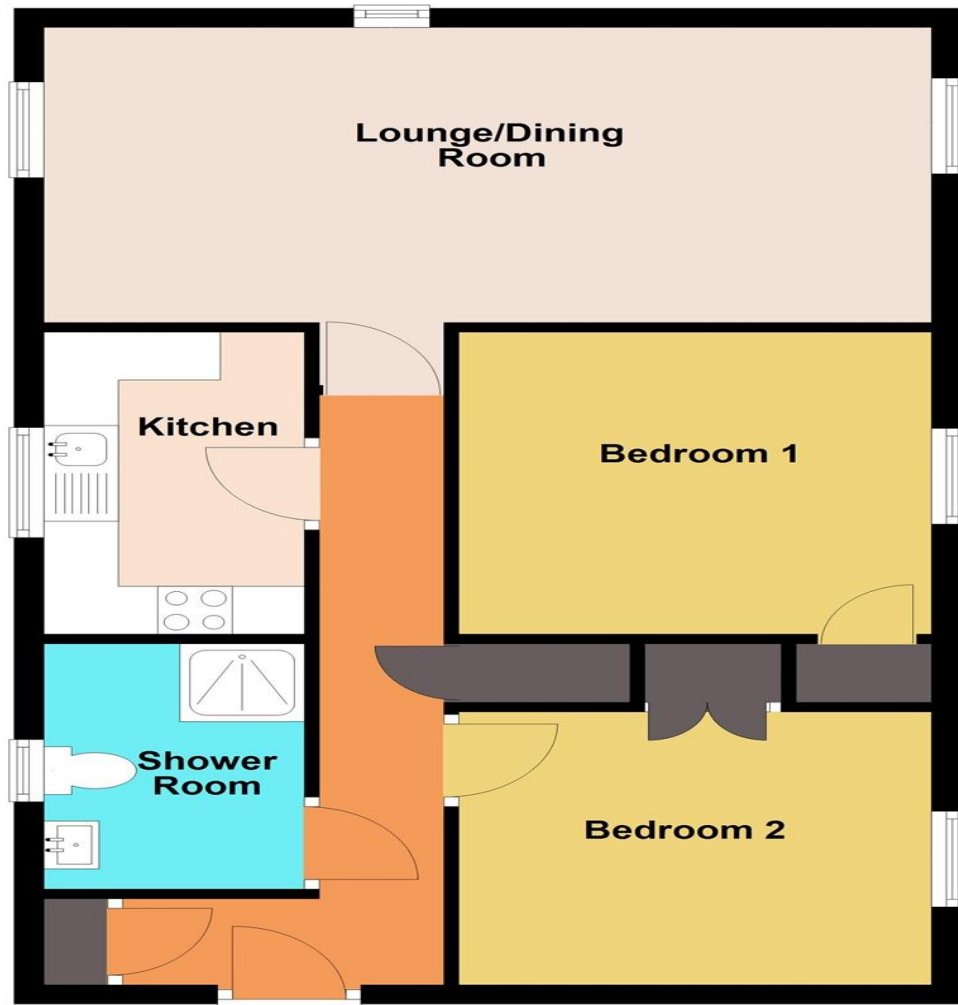
team@pinkmove.co.uk

**Pinkmove**

## Floorplan

### Ground Floor

Approx. 59.6 sq. metres (641.4 sq. feet)



Total area: approx. 59.6 sq. metres (641.4 sq. feet)

### Flat 6 Golden Mile View

## Important Information

Note while we endeavour to make our sales details accurate and reliable, if there is any point which is of particular interest to you, please contact the office and we will be pleased to confirm the position for you. We have not personally tested any apparatus, equipment, fixtures, fittings or services and cannot verify they are in working order or fit for their purposes. Nothing in these particulars is intended to indicate that carpets or curtains, furnishings or fittings, electrical goods (whether wired or not). Gas fires or light fittings or any other fixtures not expressly included form part of the property offered for sale. This computer generated Floorplan, if applicable, is intended as a general guide to the layout and design of the property. It is not to scale and should not be relied upon for dimensions. Tenure: We cannot confirm the tenure of the property as we have not had access to the legal documents. The buyer is advised to obtain verification from their solicitor or surveyor.

Peter Alan Limited is registered in England and Wales under company number 2073153, Registered Office is Cumbria House, 16-20 Hockliffe Street, Leighton Buzzard, Bedfordshire, LU7 1GN. VAT Registration Number is 500 2481 05. For activities relating to regulated mortgages and non-investment insurance contracts, Peter Alan Limited is an appointed representative of Connells Limited which is authorised and regulated by the Financial Conduct Authority. Connells Limited's Financial Services Register number is 302221. Most buy-to-let

