

Wingetts

More than just estate agents



5 Laburnum Way, Wrexham, LL13 9JS

Offers In The Region Of £375,000

Discover this beautifully presented three-bedroom detached bungalow, positioned in a cul-de-sac and offered to the market with no onward chain. A welcoming entrance hallway leads into the bright and spacious lounge/diner, fitted kitchen, and three well-proportioned bedrooms, each offering superb flexibility for family living, guest accommodation, or a dedicated home office. A well-appointed bathroom completes the interior layout, ensuring practicality and comfort throughout. Externally, the property benefits from gardens and along the side of the bungalow, an extended full-length garage offers exceptional storage, workshop capability, or exciting conversion potential (subject to planning).

This delightful bungalow combines generous proportions, versatile living spaces, and scope to personalise, making it a standout opportunity in a sought-after location. Please contact Wingetts to arrange a viewing. Energy Rating E (53)

Location

Located within the popular and historical village of Holt with views towards the Castle. Bordering the picturesque River Dee and being ideally situated for access to cities of Wrexham and Chester, the village offers a good range of local amenities to include a convenience store, post office, cafés and restaurants as well as a popular and highly regarded primary school. Lovely scenic walks along the River Dee and good road networks to Wrexham Industrial Estate, Chester Business Park and Shropshire.

Directions

From Wrexham proceed along the A534 in the direction of Holt and Farndon passing Hotel Wrexham on your right. Take the left turn signposted Holt, passing Bellis's Farm Shop and Garden Centre, continue into the centre of the village, left at The Cross, passing the convenience store. Straight across at the Cross Roads, continue along Green Street before taking a left onto Laburnum Way where the bungalow will be observed on the left.

Entrance Hallway

Upvc part glazed entrance door opening to hallway with laminate flooring, cloakroom cupboard, airing cupboard, ceiling hatch to roof space and radiator.

Lounge/Dining Room 11'1 (max) x 21'6 (3.38m (max) x 6.55m)

This bright and inviting space featuring an electric fireplace with a marble surround and hearth creating a warm and inviting focal point. Additionally there are two double glazed windows, TV Point, radiator and serving hatch through to kitchen.

Kitchen 8 x 9'9 (2.44m x 2.97m)

Fitted with a range of base and wall cupboards complimented by work surface areas incorporating a electric oven and hob with extractor hood above, stainless steel drainer sink unit with mixer tap and splashback. Additionally there is a double glazed window, laminate flooring, storage cupboard, integral fridge/freezer and washing machine and part glazed upvc external door leading to the garden,

Bedroom One 10'7 x 11'6 (3.23m x 3.51m)

Double bedroom with double glazed window, radiator and fitted carpet.

Bedroom Two 9'1 x 11'5 (2.77m x 3.48m)

Double bedroom with double glazed window, radiator, fitted wardrobes and fitted carpet.

Bedroom Three 7'7 x 10'3 (2.31m x 3.12m)

A good sized third bedroom, alternatively this would make a lovely sitting room/office. With fitted carpet, radiator and double glazed window.

Bathroom 7'11 x 5'6 (max) (2.41m x 1.68m (max))

Well appointed with panelled bath, pedestal wash basin with mains shower, WC, shaver point, tiled flooring, fully tiled walls, and frosted glazed window.

Garage 8'1 x 27'8 (2.46m x 8.43m)

Having a up and over door to front, lighting, power and oil tank.

Exterior

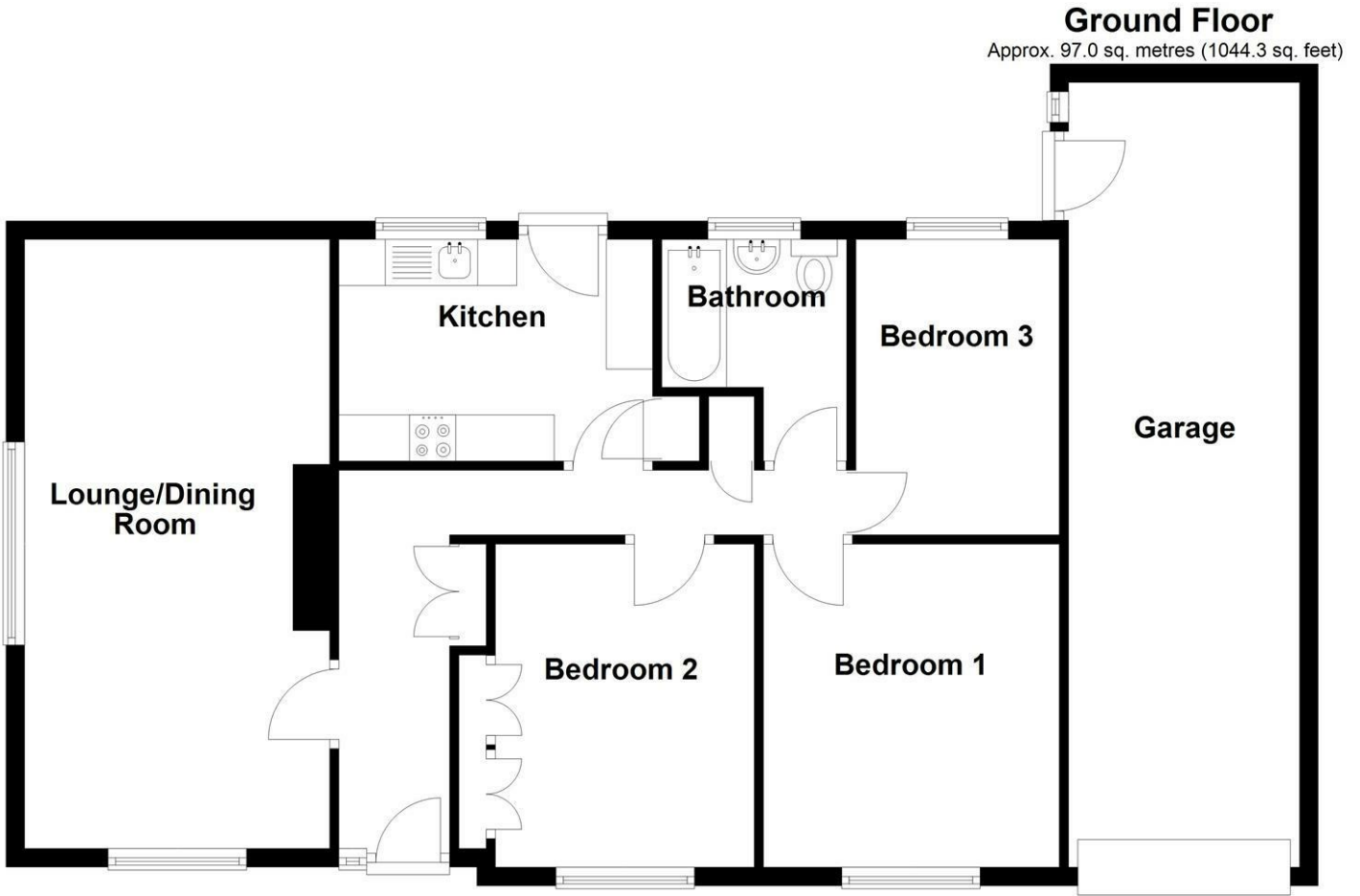
The property is approached along a paved driveway providing parking leading to garage. The garden which is mainly laid to lawn with flowerbeds, shrubs, fencing and privacy hedging.

Please note

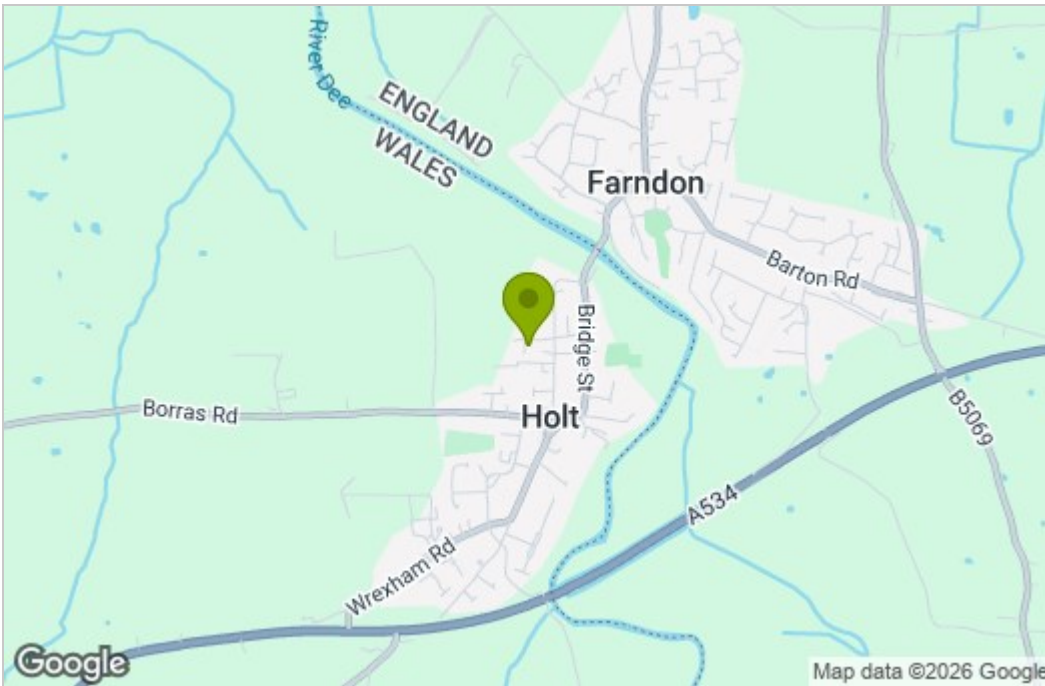
Please note that we have a referral scheme in place with Chesterton Grant Mortgages Ltd (FCA Register Number 300796). You are not obliged to use their services, but please be aware that should you decide to use them, following mortgage completion, we would receive a referral fee from them for introducing you to their Company (fee details available upon request).



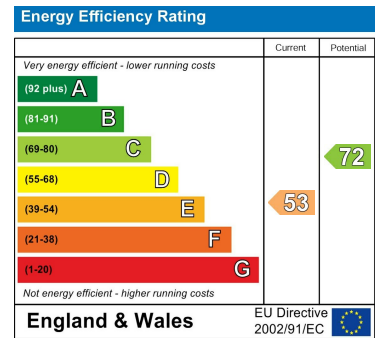
Floor Plan



Area Map



Energy Efficiency Graph



These particulars, whilst believed to be accurate are set out as a general outline only for guidance and do not constitute any part of an offer or contract. Intending purchasers should not rely on them as statements of representation of fact, but must satisfy themselves by inspection or otherwise as to their accuracy. No person in this firm's employment has the authority to make or give any representation or warranty in respect of the property.