



SINTON
ANDREWS

SINTON
ANDREWS

£2,600,000 Freehold
CULMINGTON ROAD, EALING, W13 9NJ





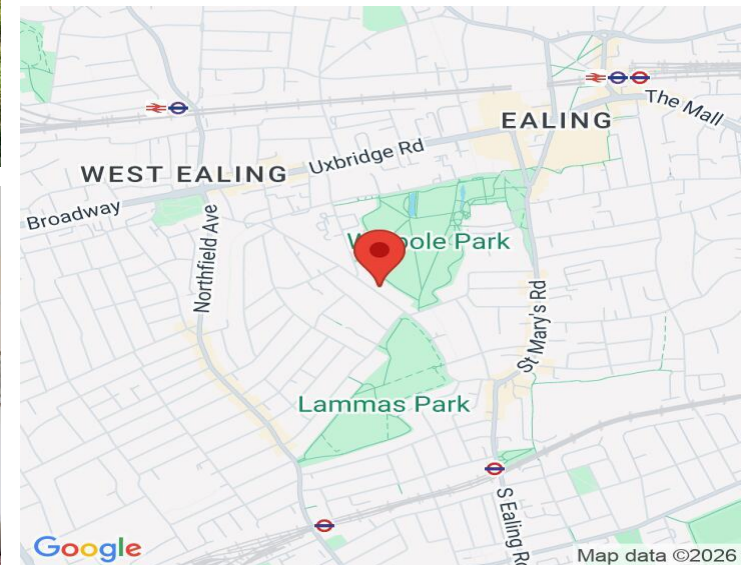
A RARE OPPORTUNITY TO ACQUIRE ONE OF THESE WONDERFUL DETACHED FAMILY HOMES, ENJOYING GLORIOUS VIEWS OVER WALPOLE PARK.

Culmington Road is a highly sought-after and fashionable Ealing street, perfectly positioned between Lammas and Walpole Parks, with their beautiful green spaces, tennis courts and cafés all close at hand. The property is also ideally located for Ealing Broadway, Northfields and South Ealing, offering excellent transport links including the Elizabeth Line, Piccadilly Line and numerous bus routes. The busy town centre is within walking distance, along with a wide choice of well-regarded schools.

This well-appointed period home provides generous accommodation arranged over three floors, including an extended family kitchen/diner, three reception rooms, a utility room and cloakroom, five bedrooms, two bathrooms and a dressing room. Outside, there is a mature rear garden with stunning open park views, along with off-street parking for two cars.

COUNCIL TAX BAND: G

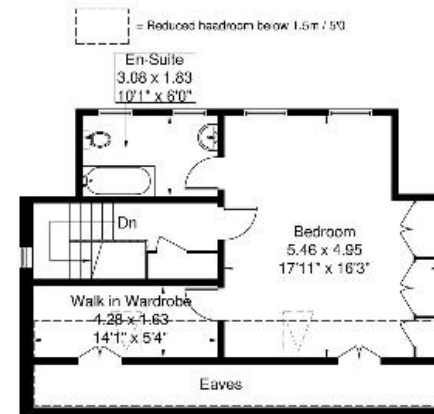
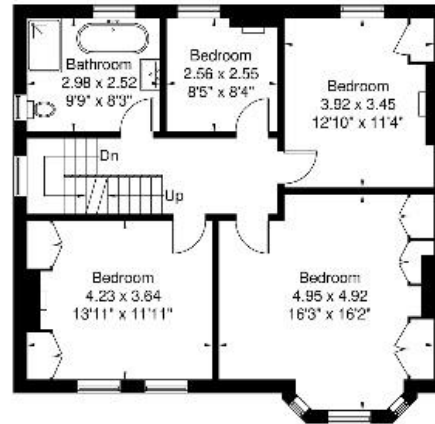
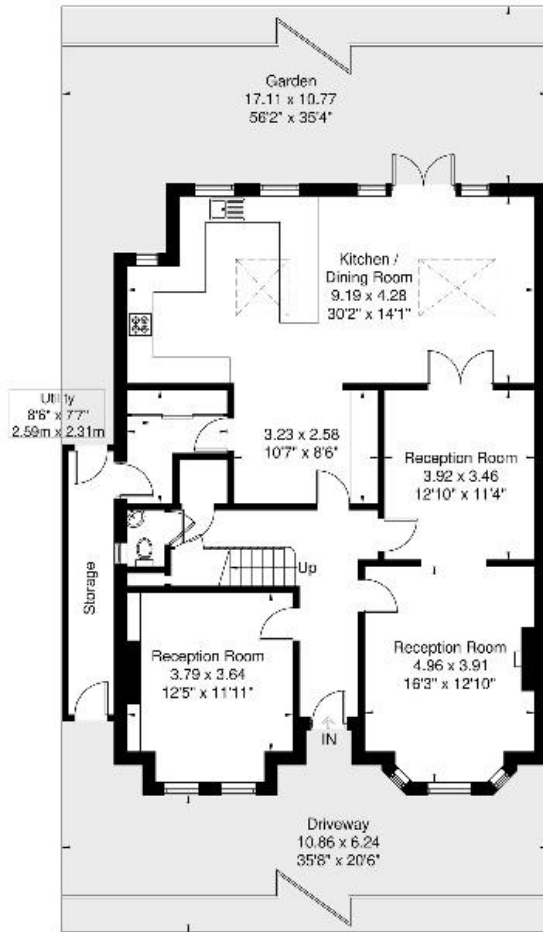
EPC Rating: D




www.sintonandrews.com
020 8566 1990

Culmington Road

Approximate Gross Internal Area = 248.9 sq m / 2679 sq ft
 Eaves / Reduced Headroom = 18.5 sq m / 199 sq ft
 Total = 267.4 sq m / 2878 sq ft



Although every attempt has been made to ensure accuracy, all measurements are approximate. The floorplan is for illustrative purposes only and not to scale.

© www.perspective.co.uk

020 8566 1990

8 Spring Bridge Road, Ealing, London W5 2AA

SINTONANDREWS.COM

