

Welton Road, Brough, East Yorkshire, HU15 1AF

☎ 01482 669982

✉ info@limbestateagents.co.uk

🌐 limbestateagents.co.uk

**Limb**  
MOVING HOME



*10 Stephenson's Walk, Cottingham, East Yorkshire, HU16 4QG*

- 📍 Semi-Detached Bungalow
- 📍 Great Location
- 📍 Off-Street Parking
- 📍 Council Tax Band = D
- 📍 2 Bedrooms
- 📍 Generous Proportions
- 📍 West-Facing Garden
- 📍 Freehold/EPC = C

**£215,000**

## INTRODUCTION

This two bedroom semi-detached bungalow in Cottingham offers huge potential and the opportunity for any buyer to make the property their own. On a popular residential cul-de-sac in Cottingham, the property is ideally situated for ease of access to village amenities, whilst also providing straightforward access into Hull. With a private and west facing garden, the property presents a perfect opportunity for any buyer with a vision.

The accommodation briefly comprises a generously sized lounge/diner, kitchen, two double bedrooms, W.C. and four piece bathroom. Outside, the rear garden is west facing, with a stone patio to the immediate rear of the property followed by lawn. There is a single garage which can be accessed through a door from the garden or from the drive to the side of the property, on which there is adequate space for parking for up to three vehicles. A small, lawned garden sits at the front of the property.

Offering spacious accommodation throughout, the property presents a perfect opportunity for modernisation in a great location.

## LOCATION

The property is situated on Stephenson's Walk, just off Endyke Lane in Cottingham. Cottingham holds the proud distinction of being one of the largest villages in England, offering quality of life that combines a bustling market-town feel with a friendly, close-knit community. Renowned for its vibrant high street and leafy residential avenues, the village provides an attractive environment that remains one of the most popular residential choices in the East Riding.

Unlike many smaller villages, Cottingham boasts a thriving centre with two main shopping streets, Hallgate and King Street. These host a diverse mix of independent shops, cafes, and essential services alongside well-known supermarkets. The community atmosphere is further enhanced by a weekly market, numerous local pubs, and the Cottingham Pavilion, which serves as a hub for local sports and social events. The village is also home to the excellent Castle Hill Hospital complex.

Families are well-served by several well-regarded primary schools, including Hallgate Primary and Bacon Garth Primary. For secondary education, Cottingham High School and Sixth Form College provides comprehensive facilities and a strong academic reputation. Additionally, the village's proximity to the University of Hull and various independent colleges ensures high-quality educational pathways for all age groups.

Cottingham provides good regional connectivity, particularly for those who value public transport. The village benefits from its own railway station on the Hull-to-Scarborough line, offering frequent services to Hull city centre, Beverley, and York. For motorists, the A164 and A63 are easily accessible, providing straightforward links to the M62 corridor and the wider national motorway network. There is a regular bus service.

Accessibility to key destinations includes:

- Hull City Centre: Approx. 4.5 miles
- Beverley: Approx. 5 miles
- York: Approx. 35 miles
- Leeds: Approx. 58 miles

Beyond the immediate vicinity, the location offers unparalleled access to the beauty of the East Riding countryside. The nearby Yorkshire Wolds present a stunning landscape of peaceful walking trails and traditional villages. This area is perfect for outdoor enthusiasts, offering easy exploration of the coast, including the dramatic clifftops and sandy beaches. The thriving market town of Beverley is nearby with the attraction of York still convenient yet a little more distant.

## ACCOMMODATION

External door opening into vestibule, with door to:

### ENTRANCE HALL

With storage cupboard to corner. Double doors open into:

## LOUNGE/DINER

With window to front, Victorian style gas fireplace to centre with marble hearth and space for a dining table.



## KITCHEN

With fitted units and worksurfaces, plumbing for a washing machine and sink & drainer beneath window to the rear. A door leads through to the rear lobby.



## REAR LOBBY

W.C. access and door to the rear patio.

## W.C.

Half-tiled, comprising low flush W.C., wash-hand basin and window to rear.



## BEDROOM 1

Comprising sliding doors to the rear garden.



## BEDROOM 2

With fitted cupboards and wardrobes throughout, window to the front.



## BATHROOM

Four-piece, fully tiled suite comprising step-in shower enclosure, bath, low-flush W.C. and wash-hand basin beneath window to the side.



## OUTSIDE

The rear garden is west facing, with a stone patio to the immediate rear of the property followed by lawn. There is a single garage which can be accessed through a door from the garden or from the drive to the side of the property, on which there is adequate space for parking for up to three vehicles. A small, lawned garden sits at the front of the property.



## REAR VIEW



## HEATING

The property has the benefit of gas central heating.

## GLAZING

The property has the benefit of double glazing.

## TENURE

Freehold

## COUNCIL TAX BAND

From a verbal enquiry we are led to believe that the Council Tax band for this property is Band D. We would recommend a purchaser make their own enquiries to verify this.

## FIXTURES & FITTINGS

Please note those items specifically mentioned in these particulars are to be deemed as being included in the purchase price unless otherwise agreed in writing. Certain other items may be available by separate negotiation as to price. Those items visible in the photographs such as furniture and personal belongings are not included in the sale price.

## VIEWING

Strictly by appointment through the agent. Brough Office 01482 669982. A prospective viewer should check on the availability of this property prior to viewing.

## AGENTS NOTE

For clarification, we wish to inform prospective purchasers that we have not carried out a detailed survey, nor tested the services, appliances, plumbing or heating system and specific fittings for this property. All measurements provided are approximate and for guidance purposes only. Floor plans are included as a service to our customers and are intended as a GUIDE TO LAYOUT only, NOT TO SCALE. Limb Estate Agents Ltd for themselves and for the vendors or lessors of this property whose agents they are give notice that (i) the particulars are set out as a general outline only for the guidance of intending purchasers or lessees, and do not constitute any part of an offer or contract (ii) all descriptions, dimensions, references to condition and necessary permissions for use and occupation, and other details are given in good faith and are believed to be correct and any intending purchaser or tenant should not rely on them as statements or representations of fact but must satisfy themselves by inspection or otherwise as to the correctness of each of them (iii) no person in the employment of Limb Estate Agents Ltd has any authority to make or give any representation or warranty whatever in relation to this property. If there is any point which is of particular importance to you, please contact the office and we will be pleased to check the information, particularly if you contemplate travelling some distance to view the property. These particulars are issued on the strict understanding that all negotiations are conducted through Limb Estate Agents Ltd.

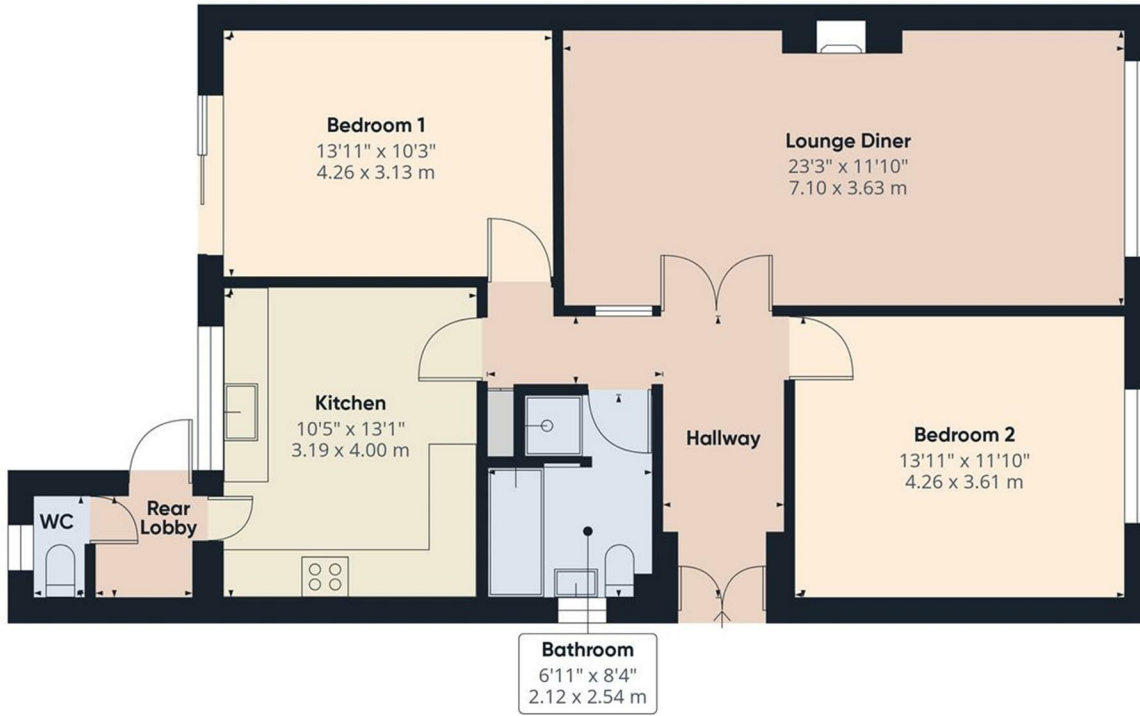
## PHOTOGRAPH DISCLAIMER

In order to capture the features of a particular room we will mostly use wide angle lens photography. This will sometimes distort the image slightly and also has the potential to make a room look larger. Please therefore refer also to the room measurements detailed within this brochure. AI may have also been used to enhance photography.

## PROPERTY TO SELL?

If you have a property to sell we would be delighted to provide a free/no obligation valuation and marketing advice. Call us now on 01482 669982.





Approximate total area<sup>(1)</sup>  
899 ft<sup>2</sup>  
83.5 m<sup>2</sup>

(1) Excluding balconies and terraces

Calculations reference the RICS IPMS 3C standard. Measurements are approximate and not to scale. This floor plan is intended for illustration only.

GIRAFFE360

