



**2 Bed
Apartment
located in 141 Chester Road**

AiHOMES.

1207420ET, 141 Chester
Road, Manchester



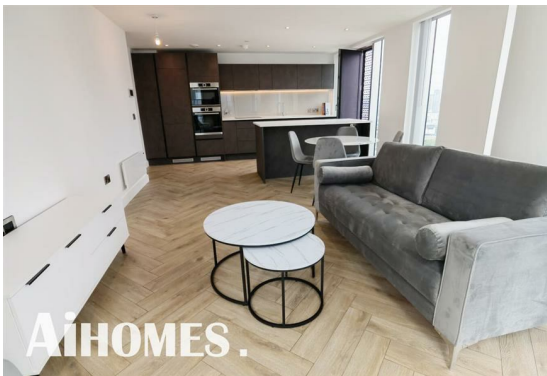
£2,344 Per Week

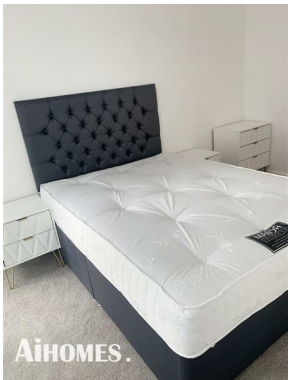
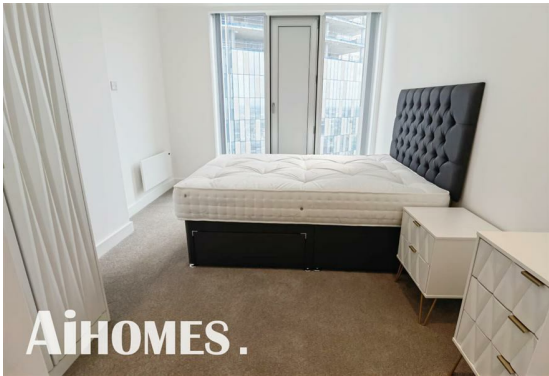
Welcome to this charming apartment located at 141 Chester Road in the vibrant city of Manchester. Spanning an impressive 936 square feet, this well-appointed residence offers a perfect blend of comfort and modern living.

The apartment features two spacious bedrooms, providing ample space for relaxation and privacy. Each bedroom is thoughtfully designed to create a serene atmosphere, ideal for unwinding after a long day. With two bathrooms, convenience is at your fingertips, ensuring that morning routines and evening rituals can be carried out with ease.

Situated in a desirable location, this property is well-connected to the heart of Manchester, offering easy access to a variety of shops, restaurants, and cultural attractions. Whether you are a first-time buyer or looking to invest, this apartment presents an excellent opportunity to enjoy city living at its finest.

With its generous layout and modern amenities, this apartment is not just a place to live, but a place to call home. Don't miss the chance to make this delightful property your own.








1207420ET, 141 Chester Road, Manchester





Energy Efficiency Rating		
	Current	Potential
<i>Very energy efficient - lower running costs</i>		
(92 plus) A		
(81-91) B		
(69-80) C		
(55-68) D		
(39-54) E		
(21-38) F		
(1-20) G		
<i>Not energy efficient - higher running costs</i>		
England & Wales	EU Directive 2002/91/EC	

EPC Rating:
Council Tax Band: D

CONTACT

5th floor, Empress Business Center
380 Chester Road
Manchester
M16 9EA

E: info@aihomes.uk

T: 0127 332 8069

AiHOMES.