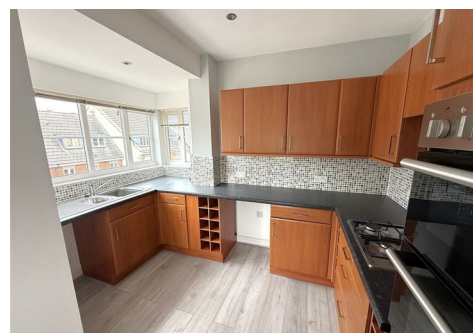


ST. CRISPIN CRESCENT, NORTHAMPTON, NN5

£125,000 | 1 Bed Flat - Purpose Built

BELVOIR!



Belvoir are pleased to offer for sale this immaculately presented top floor flat located in the desirable St. Crispin area. This purpose-built property offers a perfect blend of comfort and convenience, making it an ideal choice for first-time buyers or buy to let investors.

The accommodation consists of a well-proportioned reception room with large windows and Juliet balcony providing lots of light, separate kitchen area with plenty of cupboard space, spacious bedroom with built-in wardrobes and a bathroom. Outside you will find an allocated parking space, providing you with the convenience of off-street parking.

The flat is move-in ready, allowing you to settle in without the hassle of extensive renovations or repairs.

The vendor advises there are 103 years remaining on the lease and the annual ground rent and service charges total approximately £1,900.

COUNCIL TAX BAND: B

- Top Floor Flat
- One Bedroom
- Allocated Parking Space
- Recently refurbished
- Move in Ready
- Close to local amenities
- Ideal for first time buyers or buy to let investors
- No chain

Draft Details.

At the time of print, these particulars are awaiting approval from the vendor(s).

Disclaimer.

We endeavour to make our sales particulars accurate and reliable, however, they do not constitute or form part of an offer or any contract and none is to be relied upon as statements of representation or fact. Any services, systems and appliances listed in this specification have not been tested by us and no guarantee as to their operating ability or efficiency is given. All measurements have been taken as a guide to prospective buyers only, and are not precise. If you require clarification or further information on any points, please contact us, especially if you are travelling some distance to view. Fixtures and fittings other than those mentioned are to be agreed with the seller by separate negotiation.

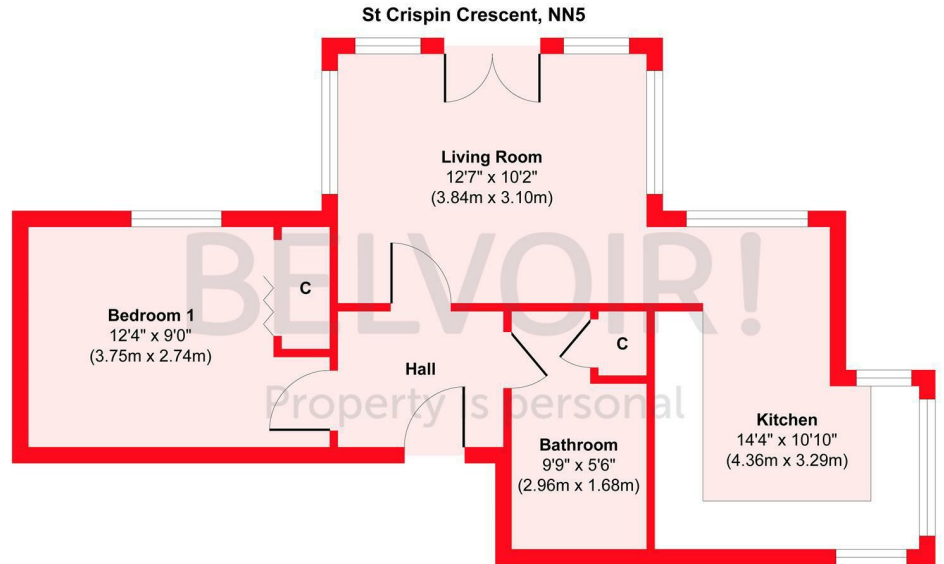
ST. CRISPIN CRESCENT, NORTHAMPTON, NN5

£125,000 | 1 Bed Flat - Purpose Built

BELVOIR!

Energy Efficiency Rating

	Current	Potential
Very energy efficient - lower running costs		
(92 plus) A		
(81-91) B		
(69-80) C	75	75
(55-68) D		
(39-54) E		
(21-38) F		
(1-20) G		
Not energy efficient - higher running costs		
England & Wales	EU Directive 2002/91/EC	



Floor Plan

Approx. Gross Internal Floor Area 461 sq. ft / 42.85 sq. m
 Illustration for identification purposes only, measurements are approximate, not to scale.
 Produced by Elements Property

