



Aldreds
Estate Agents

60 Ipswich Road
, Lowestoft, NR32 1TT
Asking Price £170,000

 3

 2

 3

 E

60 Ipswich Road

, Lowestoft, NR32 1TT

Aldreds are delighted to offer this Victorian three bedroom end terrace house situated in this popular location close to shops, schools and local amenities. It is also within walking distance of Lowestoft beach. The property is very well presented throughout with tasteful and modern style decoration and the family accommodation comprises of a lounge, kitchen, Dining & breakfast room, plus ground floor WC. On the first floor there are three generous sized bedrooms and a family bathroom. There is also an attic room which has ample space for storage/hobbies room. The property has double glazing throughout and gas central heating. To the rear of the property there is an attractive garden with lots of future potential, there is a gate at the rear of the garden providing rear access. Set at a very realistic asking price, this is ideal for a first time buyer or potentially a buy to let investor. An early viewing is strongly recommended. The vendor had already found a property to purchase which is chain free.

Lounge

10'9" x 14'0" (3.3 x 4.27)

Fitted carpet, double glazed bay window, power points, radiator.

Dining Room

10'9" x 11'10" (3.3 x 3.61)

Wood effect flooring, power points, radiator, feature fireplace, double glazed window, alcove storage.

Breakfast Room

11'6" x 8'9" (3.51 x 2.67)

Wood effect flooring, power points, radiator, storage cupboard, double glazed window.

Kitchen

8'0" x 8'0" (2.46 x 2.44)

Vinyl flooring, a range of fitted kitchen units with work surfaces over, stainless steel sink with single drainer, tiled splashbacks, space for oven and hob, extractor fan, recess for fridge/freezer, recess and plumbing for washing machine, double glazed window, power points.

Lobby/Utility room

Laminate flooring, door leading to rear garden.





Cloakroom

Wood effect flooring, cloakroom suite comprising of a low level WC, hand basin, tiled splashback, double glazed window.

First Floor Landing

Fitted carpet, stairs rising to second floor.

Bedroom 1

13'8" x 12'0" (4.19 x 3.66)

Fitted carpet, radiator, power points, two double glazed windows, built in storage.

Bedroom 2

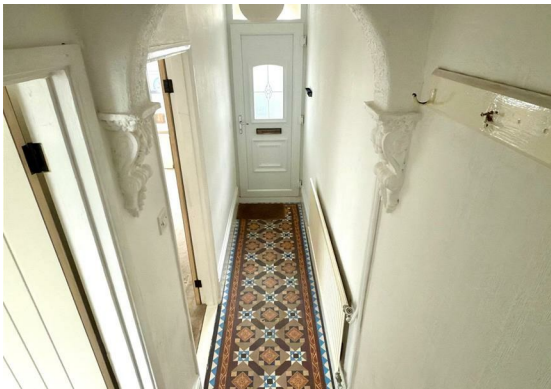
8'3" x 14'0" (2.54 x 4.27)

Fitted carpet, radiator, power points, double glazed window, built in storage.

Bedroom 3

8'0" x 11'1" (2.46 x 3.38)

Fitted carpet, radiator, power points, double glazed window, gas boiler.



Bathroom

Vinyl flooring, bathroom suite comprising of a shower set over a panel bath, low level WC, vanity sink unit, part tiled walls, double glazed window, radiator.

Second Floor Attic Room

Wood flooring, Velux window, ideal for storage use.



Outside

Outside to the front there is a forecourt with low level brick wall. To the rear there is a spacious garden which is partially laid to lawn, patio seating area, concrete shed base, gated rear access, all enclosed by high timber fencing.

Council Tax

Band 'B'

Floor Plan



Viewing

Please contact our Aldreds Lowestoft Office on 01502 565432 if you wish to arrange a viewing appointment for this property or require further information.

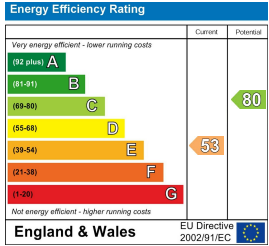
Disclaimer

These particulars are issued on an understanding that all negotiations shall be conducted through Messrs. Aldreds. Please note: Messrs. Aldreds for themselves and for the vendors or lessors of this property whose agents they are given notice that: 1. Particulars are set out as a general outline only for guidance of intending purchasers or lessees, and do not constitute nor constitute part of, an offer or contract. 2. All descriptions, dimensions, references to condition and necessary permissions for use and occupation, and other details are given without responsibility and any intending purchasers or tenants should not rely on them as statements or representations of fact but must satisfy themselves by inspection or otherwise as to the correctness of each of them. 3. No person in the employment of Messrs. Aldreds has any authority to make or give any representation or warranty whatever in relation to this property. 4. If you are proposing to visit the property and are travelling some distance please check with Aldreds on the issue of availability prior to travelling. 5. Aldreds Property Consultants and associated services may offer additional services to the prospective purchaser for which they will be entitled to receive a commission. Aldreds are pleased to be working with Mortgage Advice Bureau. They're an award-winning mortgage broker with over 1,400 advisers across the UK, and have access to over 12,000 mortgage products from over 90 lenders. Aldreds Estate Agents Ltd receive a commission of £200 on each completed case. Your home may be repossessed if you do not keep up repayments on your mortgage. There may be a fee for mortgage advice. The actual amount you pay will depend upon your circumstances. The fee is up to 1%, but a typical fee is 0.3% of the amount borrowed. Mortgage Advice Bureau is a trading name of Mortgage Seeker Limited which is an appointed representative of Mortgage Advice Bureau Limited and Mortgage Advice Bureau (Derby) Limited which are authorised and regulated by the Financial Conduct Authority. Mortgage Seeker Limited Registered Office: Lovewell Blake, Sixty Six North Quay, Great Yarmouth, Norfolk, NR30 1HE. Registered in England Number: 03721415. 6. Potential purchasers should check with their providers that the broadband and mobile phone coverage they would require is available.

Area Map



Energy Efficiency Graph



143 London Road North, Lowestoft, Suffolk, NR32 1NE
Tel: 01502 565432 Email: lowestoft@aldreds.co.uk <https://www.aldreds.co.uk/>
Registered in England Reg. No. 08945751 Registered Office: 17 Hall Quay, Great Yarmouth, Norfolk NR30 1HJ
Directors: Mark Duffield B.S.c. FRICS. Dan Crawley MNAEA Paul Lambert MNAEA