



Guide Price
£500,000

Freehold

3x  1x  1x 

**Russell Garth Cottages,
High Street, Eynsford,
Kent, DA4**

OVER 60?

Secure this property
for up to **59% less!**

Wards
Helping you move forwards



Main features

- 3 bedroom semi-detached Grade II listed house
- Conservatory overlooking the rear garden
- Close to Eynsford train station
- 140ft rear garden with stream
- A wonderful village location

Accommodation

GROUND FLOOR

Entrance Hall

Lounge: 17'8 x 9'8 (5.39m x 2.95m)

Kitchen: 13'2 x 9'9 (4.02m x 2.97m)

Conservatory: 14'3 x 11'4 (4.35m x 3.46m)

FIRST FLOOR

Landing

Bedroom 1: 11'4 x 10'3 (3.46m x 3.13m)

Bedroom 2: 11'1 x 6'5 (3.38m x 1.96m)

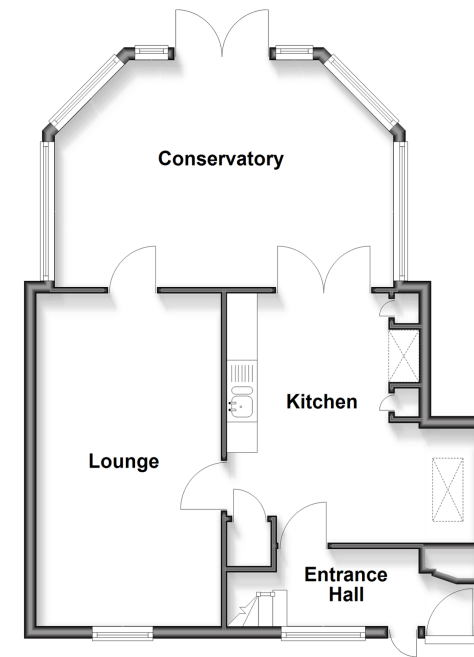
Bedroom 3: 9'7 x 7'7 (2.92m x 2.31m)

Bathroom: 10'7 x 7'1 (3.23m x 2.16m)

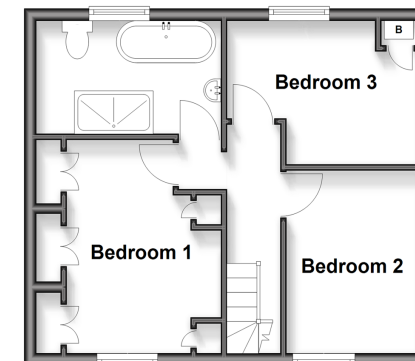
OUTSIDE

Rear Garden

Ground Floor
Approx. 56.6 sq. metres (609.6 sq. feet)



First Floor
Approx. 34.0 sq. metres (366.5 sq. feet)



Call Eynsford - 01322 862844 ■ wardsof Kent.co.uk

■ Through a Homewise Home For Life Plan people aged 60+ can secure this property for up to 59% less, by purchasing a Lifetime Lease



12520162/20260323/MC/CA