



86, Wenlock Road, Shrewsbury, SY2 6JT
£1,150 Per Month



86, Wenlock Road, Shrewsbury, SY2 6JT

£1,150 Per Month

VIRTUAL TOUR AVAILABLE: Attractive two bedroom end-of-terrace Victorian property located in a popular residential area of Shrewsbury offering excellent access to the M54, A5 and the town centre. Driveway parking for up to three cars.

Available: 01/06/26

Description

Comprising: Living room, dining room, kitchen with integrated oven, gas hob, washing machine and fridge freezer. Stairs leading to first floor landing, master bedroom, small double bedroom, shower room. Gas central heating. Double Glazing. Driveway parking for up to three cars. Front and rear gardens. EPC D.



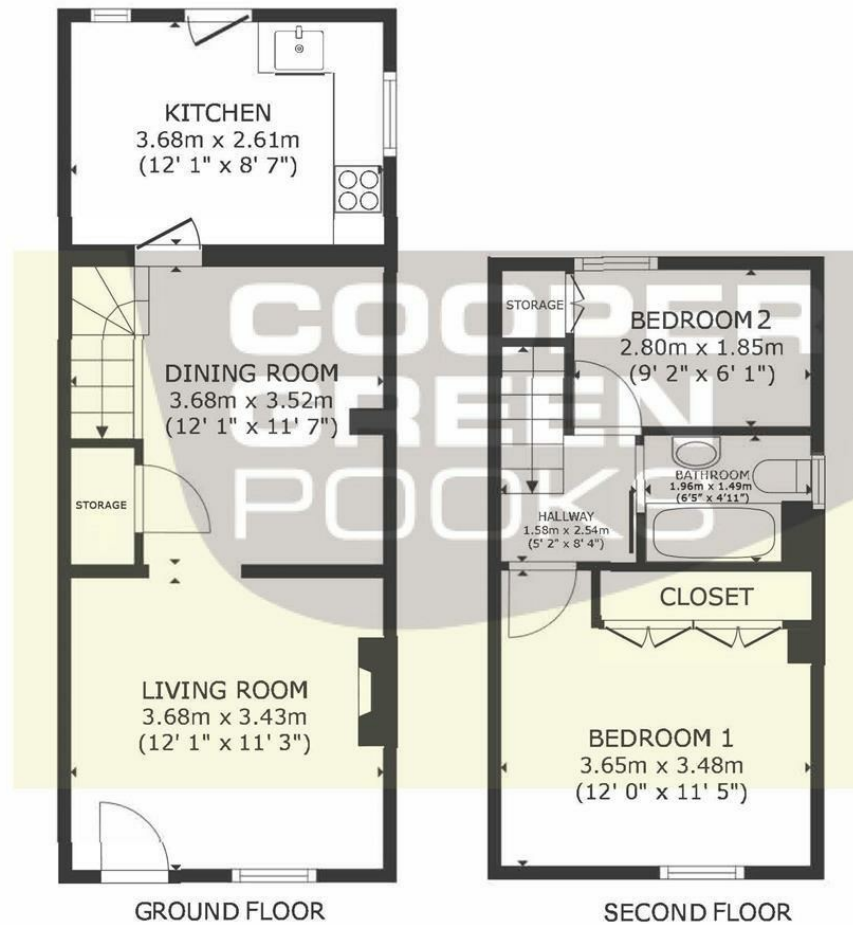
Unfurnished

Council Tax Band: B

Available: 1st June 2026

EPC: D

Floor Plans



GROSS INTERNAL AREA GROUND FLOOR 36.6 m² (394 sq.ft.) FIRST FLOOR 25.6 m² (275 sq.ft.) TOTAL : 62.2 m² (669 sq.ft.)

SIZES AND DIMENSIONS ARE APPROXIMATE, ACTUAL MAY VARY.

These particulars, whilst believed to be accurate are set out as a general outline only for guidance and do not constitute any part of an offer or contract. Intending purchasers should not rely on them as statements of representation of fact, but must satisfy themselves by inspection or otherwise as to their accuracy. No person in this firm's employment has the authority to make or give any representation or warranty in respect of the property.