

3 Bed House - Semi-Detached

Price £250,000

📍 Etwall Road, Mickleover, Derby, DE3 0DL



www.phillipsandco.co.uk | 01332 40 25 25

**Phillips
& Co**
EST. 2012
MY PAD GROUP

3 Bed House - Semi-Detached

£250,000

 Etwall Road, Mickleover, Derby, DE3 0DL

A charming and characterful cottage offering approximately 1,100 sq. ft. of well-proportioned living accommodation, ideally situated within easy reach of Mickleover Village and its excellent range of amenities.

This attractive home boasts three generous double bedrooms and retains a wealth of character throughout, creating a warm and inviting atmosphere. The property combines traditional charm with practical living space, making it ideal for those seeking a unique home in a highly desirable location.

Outside, there is a private south facing courtyard garden providing a secluded and low-maintenance outdoor space, perfect for relaxing or entertaining.

Offered to the market with IMMEDIATE VACANT POSSESSION available and benefiting from no upward chain, Drumble Cottage presents an excellent opportunity for purchasers looking for a straightforward move. The property is sold freehold. Council tax band B. energy rating D.

Living Room 25'7" x 11'11" (7.80 x 3.64)



The focal point of the room being the exposed brick chimney breast, housing the cast iron wood burner, stripped and polished floorboards, Tv connection point, timber entrance door, revealed beamed ceiling, two radiators and two double glazed windows.

Dining Kitchen 25'2" x 9'4" (7.69 x 2.87)



Having a range of fitted wall, base and drawer units. Inset five burner gas hob with electric oven and grill, inset 'Belfast' sink, quarry tiled floor, staircase to first floor, two UPVC double glazed windows, radiator, revealed beam to ceiling and UPVC double glazed door to rear.

Principle Bedroom 13'10" x 11'10" (4.24 x 3.63)



Having radiator and double glazed window.

Bedroom Two 11'10" x 11'4" (3.63 x 3.46)



Having radiator and UPVC double glazed window.



First Floor

Landing

www.phillipsandco.co.uk | 01332 40 25 25

**Phillips
& Co**
EST. 2012
MY PAD GROUP

3 Bed House - Semi-Detached

£250,000

 Etwall Road, Mickleover, Derby, DE3 0DL

Bedroom Three 10'9" x 9'4" (3.28 x 2.87)



Having radiator and double glazed window.



To the rear is a south facing fenced courtyard with gated access onto Orchard Street.

Separate Wc



Having white Wc and double glazed window.

Bathroom



Having white two piece suite, airing cupboard and double glazed window.

Outside

www.phillipsandco.co.uk | 01332 40 25 25

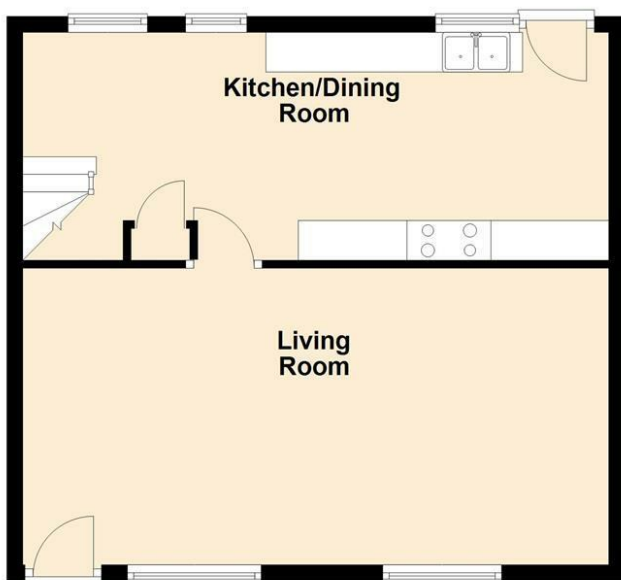
**Phillips
& Co.**
EST. 2012
MY PAD GROUP

3 Bed House - Semi-Detached

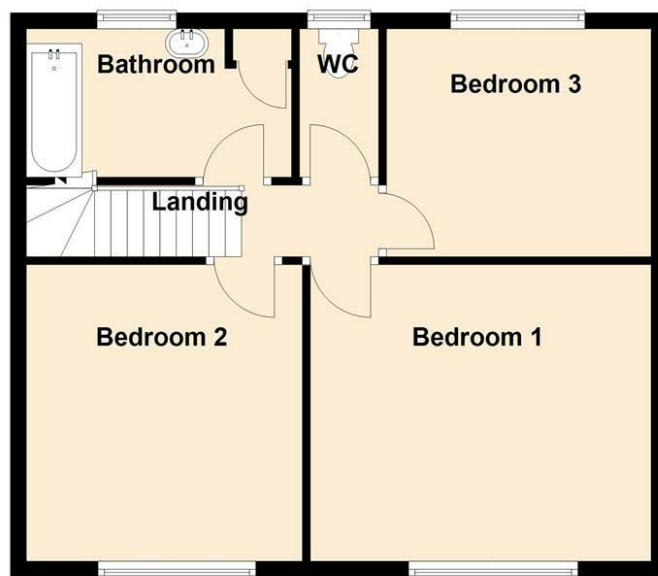
£250,000

📍 Etwall Road, Mickleover, Derby, DE3 0DL

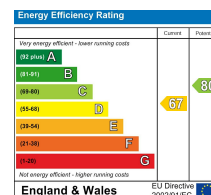
Ground Floor



First Floor



You may download, store and use the material for your own personal use and research. You may not republish, retransmit, redistribute or otherwise make the material available to any party or make the same available on any website, online service or bulletin board of your own or of any other party or make the same available in hard copy or in any other media without the website owner's express prior written consent. The website owner's copyright must remain on all reproductions of material taken from this website.



www.phillipsandco.co.uk | 01332 40 25 25

