



RESIDENCE

32D Townhead Street, Strathaven, ML10 6DH

[www.residenceestateagents.co.uk](http://www.residenceestateagents.co.uk)





Viewing by appointment with Residence Strathaven

T: 01357 572222 | E: [strathaven@residencestateagents.co.uk](mailto:strathaven@residencestateagents.co.uk) | A: 3 Bridge Street, Strathaven, ML10 6AN





## 3 Bedroom | 1 Public Room | 2 Bathroom

A fantastic opportunity to acquire this rarely available, full top-floor apartment, occupying a fantastic location within the ever-popular town of Strathaven. Offering generous, well-proportioned accommodation throughout, the property enjoys its own private entrance, secure door entry system and private parking.

On entering, a welcoming hallway provides access to all apartments and excellent storage options. The standout feature of the home is the impressive open-plan kitchen, dining and lounge area, a bright and stylish space perfect for modern living and entertaining. This stunning room is further enhanced by a beautiful bay window, allowing an abundance of natural light and creating a real focal point.

The accommodation comprises three well-sized bedrooms, including a spacious principal bedroom with en-suite shower room. A contemporary family bathroom, separate utility room, and additional storage cupboards add to the practicality of the layout.

The property benefits from newly fitted gas boiler (10 year warranty), new modern insulation, double glazing, and well-maintained communal areas, all contributing to a comfortable and secure living environment.

Ideally located just a stone throw from Strathaven town centre, the apartment is perfectly placed for local amenities, cafés, shops, public transport links, and highly regarded schools, while still offering a peaceful residential setting.

Early viewing is highly recommended to fully appreciate the space, layout, and prime location of this exceptional home.

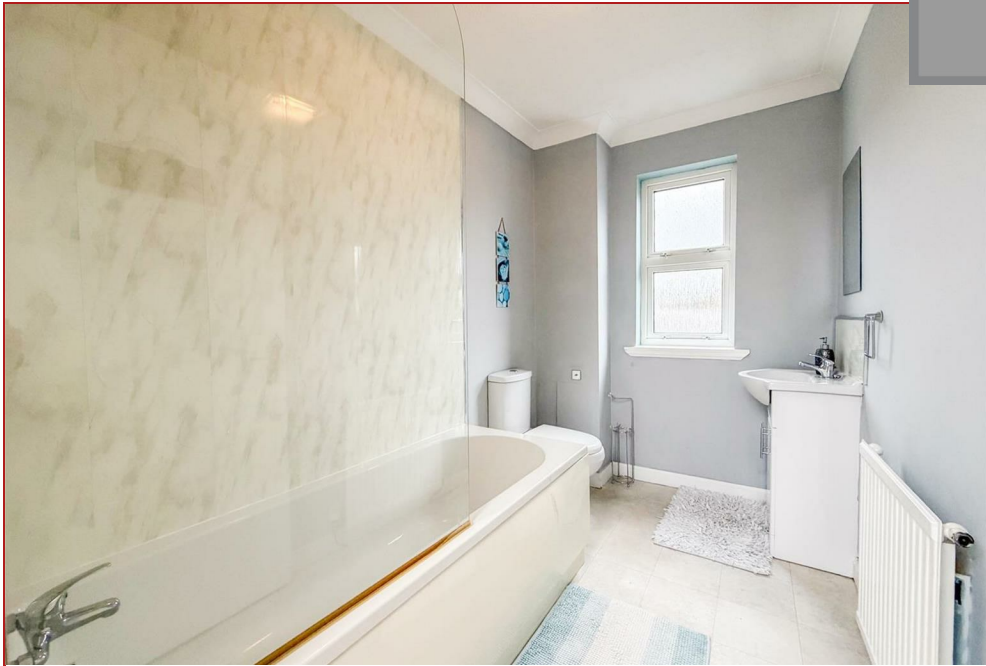


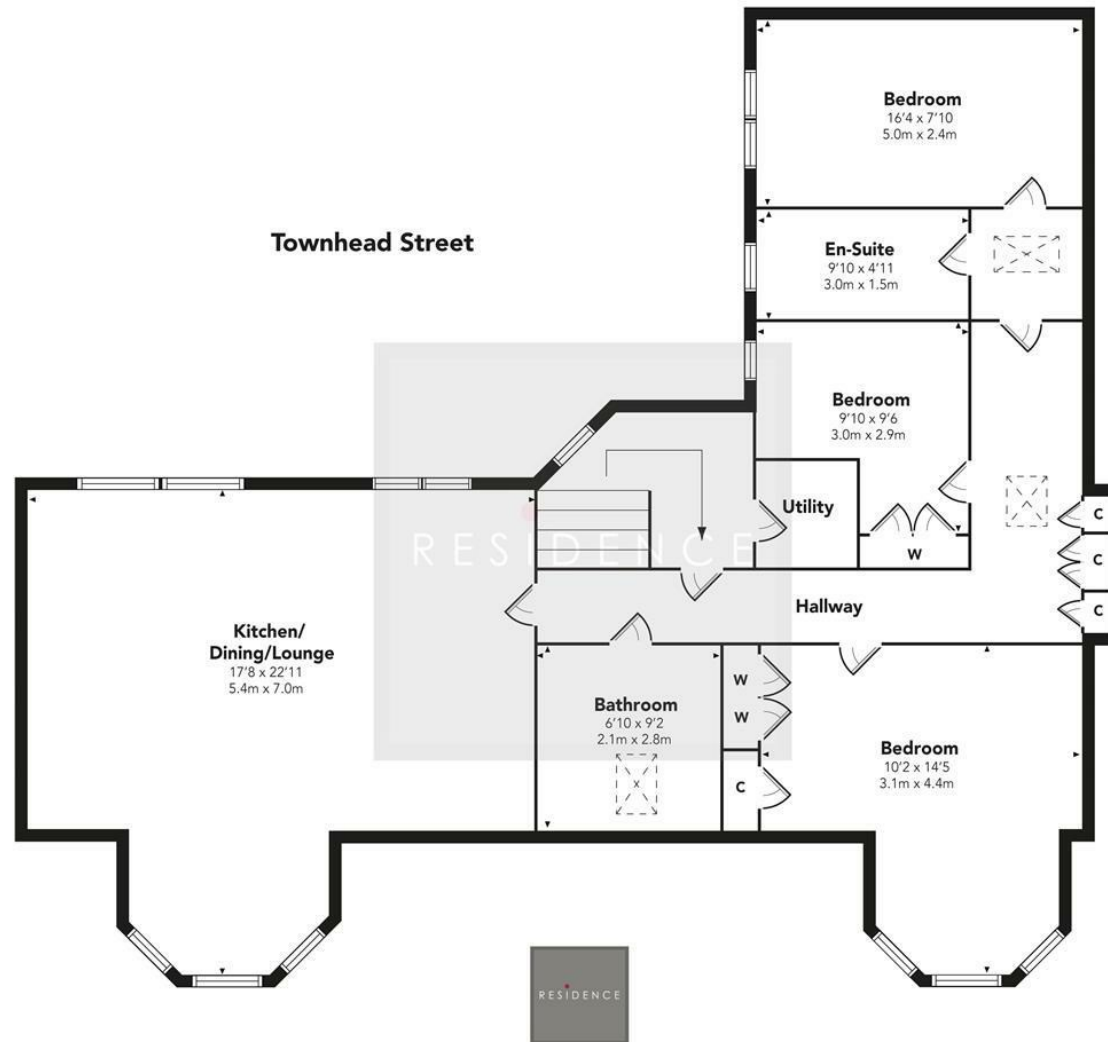
1087.20 sq ft | EER = D





RESIDENCE





Floor Plan measurements are approximate and are for illustrative purposes only.  
 While we do not doubt the floor plans accuracy, we make no guarantee, warranty or representation  
 as to the accuracy and completeness of the floor plan. You or your advisors should conduct a careful,  
 independent investigation of the property to determine to your satisfaction as to the suitability  
 of the property for your space requirements.  
 Produced by Plush Plans Ltd

We believe these details to be accurate; however, they do not form any part of a contract. Fixtures and fittings are not included unless specified in the enclosed. Photographs are for general information and it must not be inferred that any item is included for sale with the property. All distances and measurements are approximate. Floorplans may not be to scale and are for illustration purposes only.