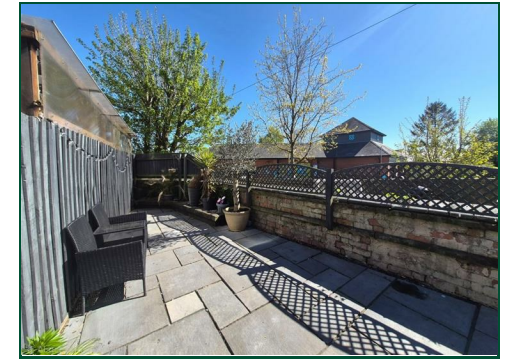




High Street

Earls Barton, Northamptonshire

oriordanbond
LETTINGS



High Street

Earls Barton

NN6 0JG

£1,500 PCM

Available in September is this well presented four bedroom Victorian end terraced house. With good size accommodation over three floors, including a re-fitted kitchen and bathroom, the property is located within the heart of the thriving village of Earls Barton. The accommodation comprises entrance hall, spacious sitting room, dining room, re-fitted kitchen with door to a courtyard garden, stairs to first floor landing, spacious master bedroom, further double bedroom and re-fitted family bathroom, stairs to second floor and two further bedrooms. Outside is a pretty courtyard garden with seating area and outbuildings to the rear. Further benefits include uPVC double glazing, gas radiator heating and a cellar.

Tenancy Information

- Deposit: £1,730.00 (1 Week Holding Deposit - £346.00)
- Smokers: Not Allowed
- Unfurnished
- Length of Tenancy: Long term
- Available: Mid to End September

Additional information

- Council Tax Band: A
- Energy Efficiency Rating:

Viewing

Viewing strictly by appointment – details below

Disclaimer

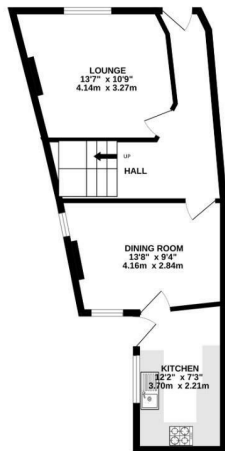
O'Riordan Bond Estate Agents Limited has not tested apparatus, equipment, fittings or services and so cannot verify they are in working order. The buyer is advised to obtain verification from their solicitor or surveyor.

O'Riordan Bond Weston Favell Lettings
01604 814400

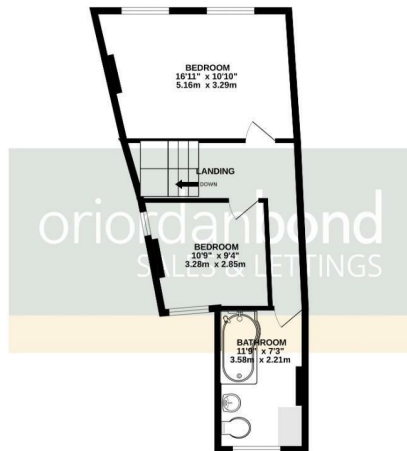
lettingswestonfavell@oriordanbond.co.uk



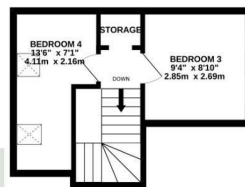
GROUND FLOOR
432 sq ft. (40.1 sq m) approx.



1ST FLOOR
428 sq ft. (39.8 sq m) approx.



2ND FLOOR
233 sq ft. (21.7 sq m) approx.



TOTAL FLOOR AREA: 1093 sq ft. (101.6 sq m) approx.

Whilst every attempt has been made to ensure the accuracy of the floorplan contained here, measurements of doors, windows, rooms and any other items are approximate and no responsibility is taken for any error, omission or mis-statement. This plan is for illustrative purposes only and should be used as such by any prospective purchaser. The services, systems and appliances shown have not been tested and no guarantee as to their operability or efficiency can be given.
Made with Metropix 02/2025