



Castles

OFFERS IN EXCESS OF

£385,000

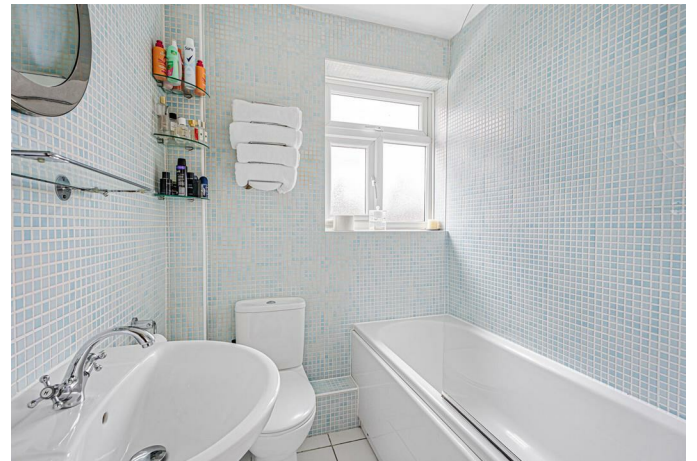
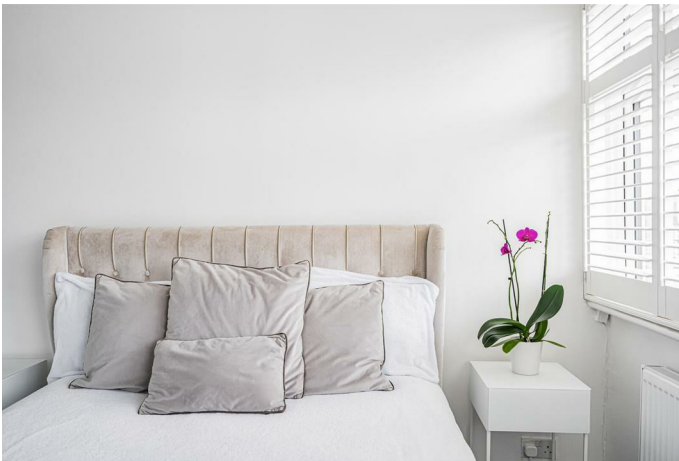
Curzon Avenue

Enfield, EN3 4UA

PROPERTY SUMMARY

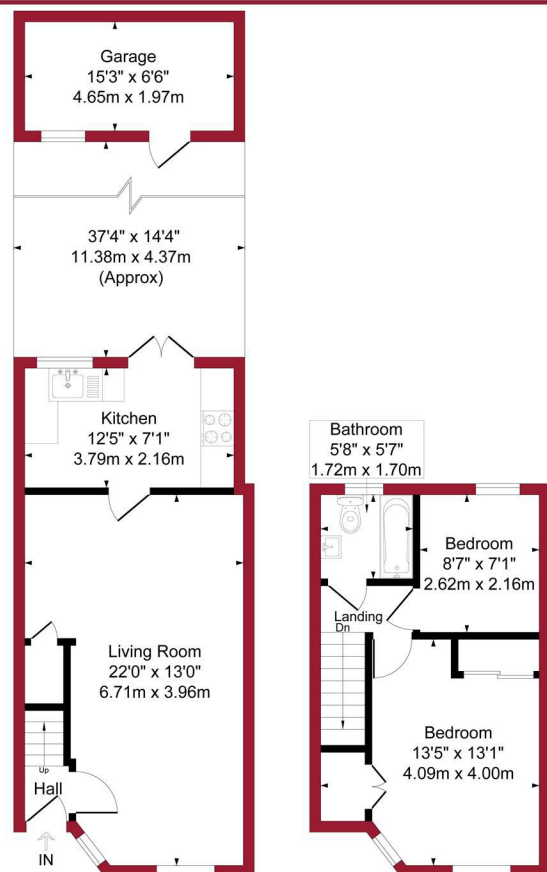
In our opinion a very well presented two bedroom 1930's Terraced property situated within 1/4 mile of Ponders End BR Station. The property comprises of Reception one and kitchen to ground floor with two bedrooms and bathroom to first floor, it also has features to include, 40ft rear garden, off street parking and gas central heating.





Curzon Avenue, Enfield, EN3

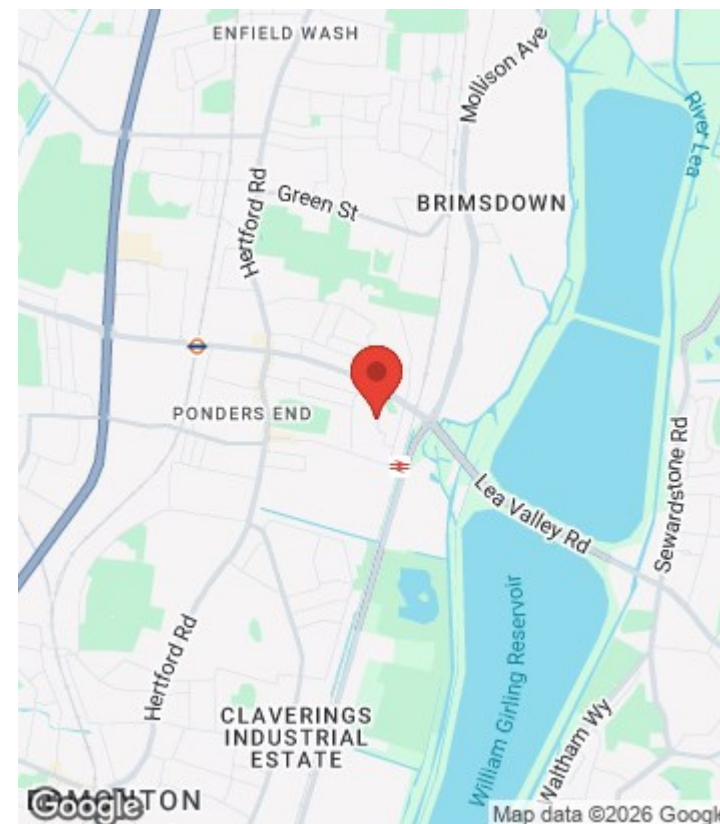
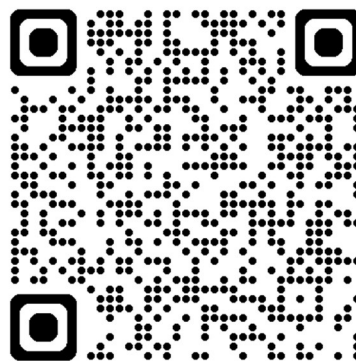
Approximate Gross Internal Area = 742 sq ft / 68.9 sq m
(Including Garage)



Ground Floor
Gross Internal
Floor Area 467 sq ft / 43.4 sq m

First Floor
Gross Internal
Floor Area 275 sq ft / 25.5 sq m

For a guide to the area
please scan this code for
more information



House - Terraced

Freehold

Council:

Council Tax Band: C

Agents Note: Whilst every care has been taken to prepare these particulars, they are for guidance purposes only. All measurements are approximate and are for general guidance purposes only and whilst every care has been taken to ensure their accuracy, they should not be relied upon and potential buyers/tenants are advised to recheck the measurements



OFFICE ADDRESS

438 Hertford Road
Edmonton
London
N9 8AB

OFFICE DETAILS

020 8804 8123
edmonton@castles.london
<https://www.castles.london/>

