



A well presented two bedroom ground floor apartment in a sought after area
Burhill Grove, Pinner, HA5 3DW

ROBSONS

Asking Price: £1,650 pcm

A well presented two bedroom ground floor apartment in a sought after area

Burhill Grove, Pinner, HA5 3DW

• ENTRANCE HALL • LIVING ROOM • MODERN FITTED KITCHEN • TWO BEDROOMS • FAMILY BATHROOM • PRIVATE CAR PORT FOR ONE CAR • RESIDENTS PARKING • COMMUNAL GROUNDS • UNFURNISHED

Description

Well-presented two bedroom ground floor apartment, ideally located in the heart of Pinner Village, offering a lifestyle of convenience with a wide range of local amenities just moments away. The property features fitted kitchen, two spacious bedrooms, bright living room and a family bathroom suite. Externally there is a private car port for one car, residents parking and attractive communal gardens.

** An advance reservation payment of one weeks rent is required to secure the property **

Location

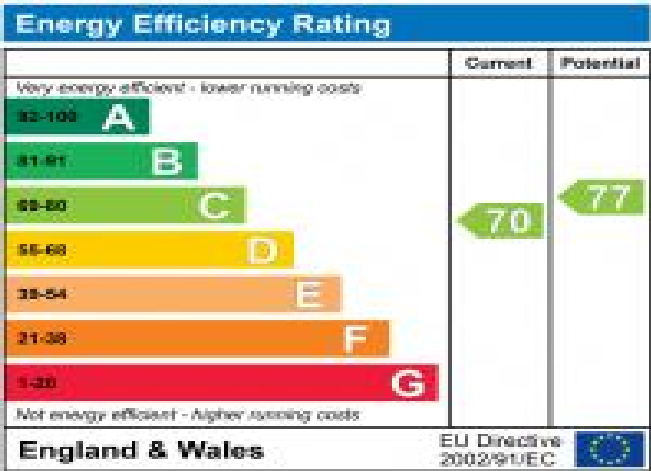
Burhill Grove is a quiet cul-de-sac development situated within easy reach of Pinner's historic village centre, which offers a variety of shops, cafés, pubs, and restaurants, as well as the Metropolitan Line station providing quick and easy access to London and the City.





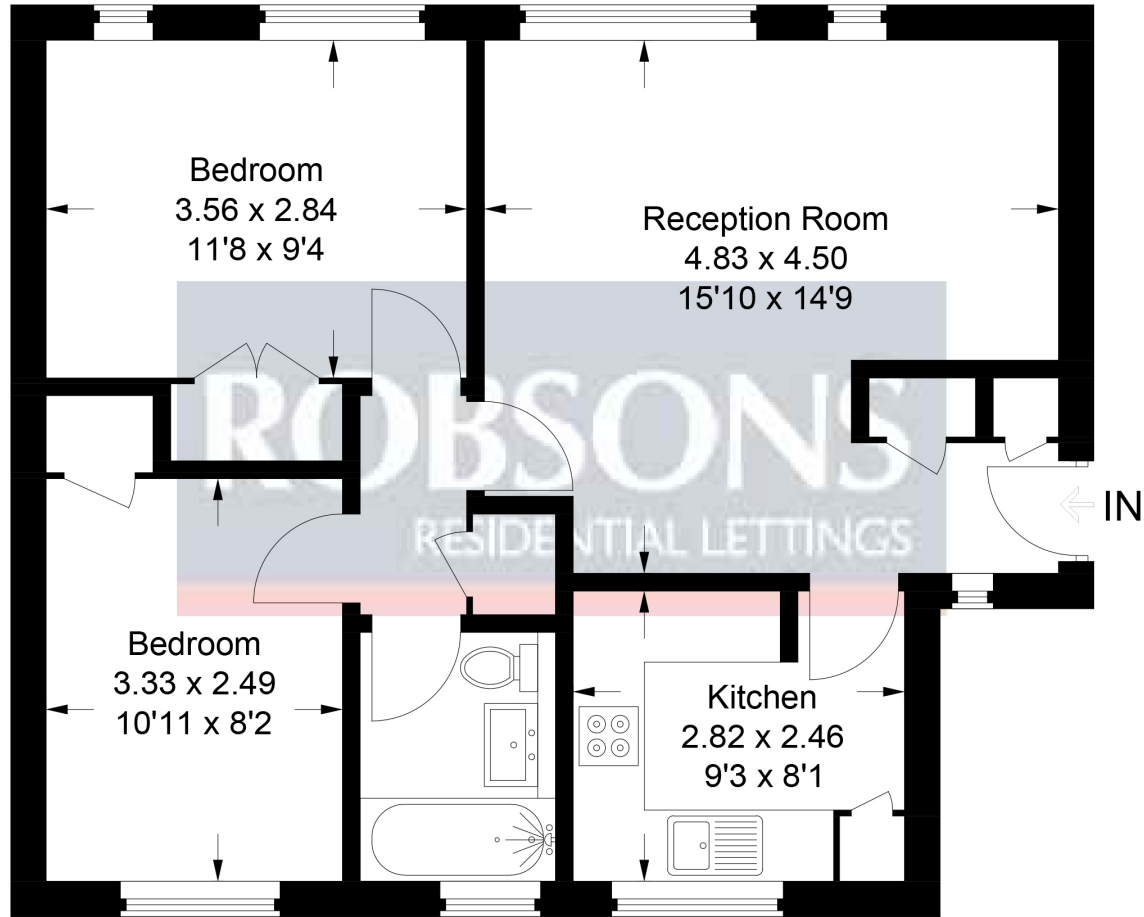
Additional Information

- Local Authority: Harrow
- Council Tax Band: D
- Deposit Amount: £1,903.00
- Reservation Payment: One weeks rent
- Energy Efficiency Rating: Band C
- Available Date: 06/02/2026



5 Burhill Grove

Approximate Gross Internal Area
57.4 sq m / 618 sq ft



Ground Floor

This plan is for layout guidance only. Not drawn to scale unless stated. Windows and door openings are approximate. Whilst every care is taken in the preparation of this plan, please check all dimensions, shapes and compass bearings before making any decisions reliant upon them.

© CJ Property Marketing Ltd Produced for Robsons



REGISTERED OFFICE 2-4 PACKHORSE ROAD, GERRARDS CROSS, BUCKINGHAMSHIRE, ENGLAND, SL9 7QE. COMPANY NO. 07557114. VAT NO. GB211239453